

CHILDREN'S PARK

SCHEMATIC DESIGN

DESIGN NARRATIVE

While Children's Park welcomes all visitors, its design places particular focus on younger children. This is primarily exhibited in the playground design but is also demonstrated in the incorporation of smaller picnic tables and climbing boulders.

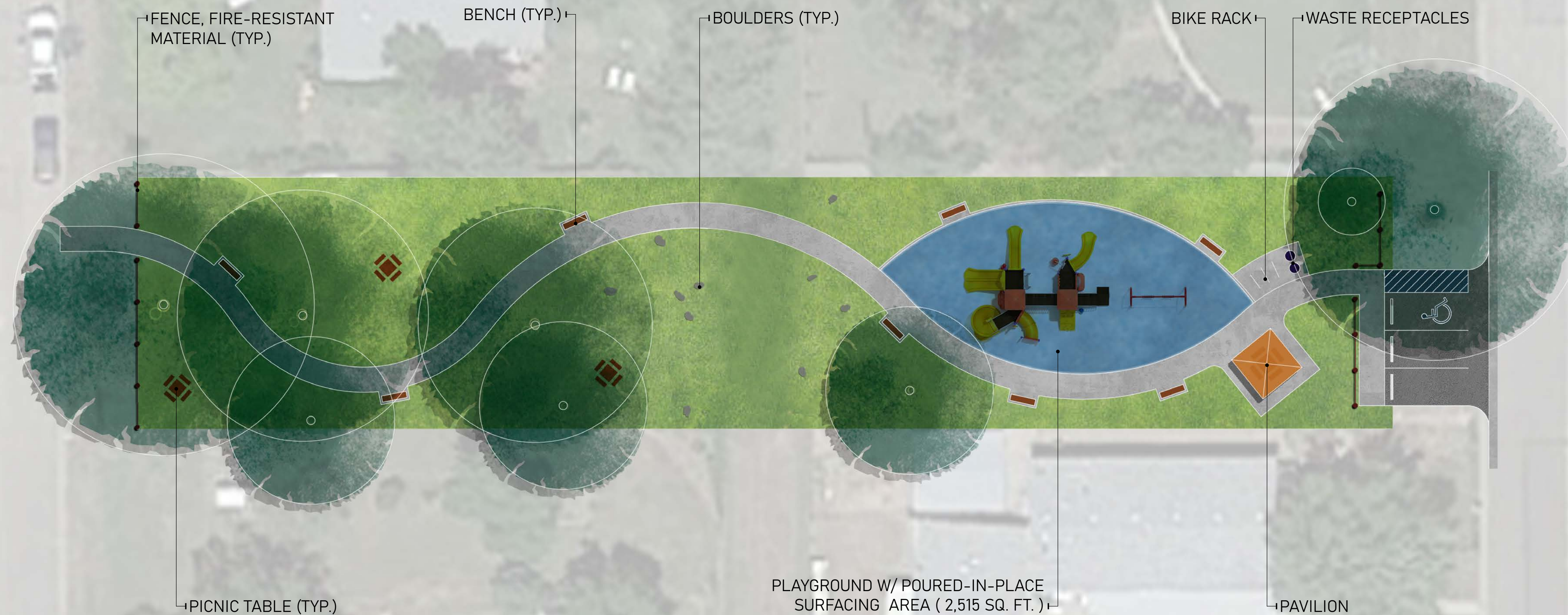
Development is focused on the eastern half (e.g., playground, pavilion, parking) while leaving the western portion relatively untouched for unprogrammed activities.

MATERIAL SELECTION

All materials (e.g., furnishings, vegetation) maintain a focus on fire resistance and general durability for public use. As the park is meant for families and children, their specification also considers elements of safety.

3RD AVENUE

2ND AVENUE



SCALE: 1" = 20'



BIG SAGAMORE PARK

SCHEMATIC DESIGN

DESIGN NARRATIVE

Big Sagamore Park's design focuses on providing a fundamental green space for the neighborhood. While it offers active design elements (e.g. a playground and paved seating area for small planned gatherings), it strives to maintain a light touch that still allows unprogrammed activity to occur. Indeed, Big Sagamore Park offers a space for neighbors with limited backyards to gather and play.

Planting beds have been incorporated to provide aesthetic interest, but they have been located along pathways (not adjacent homeowner parcels). Seating (particularly picnic tables) has been included sparingly to allow green space to be maintained.

Lastly, the beginnings of a trail has been introduced to provide access to seating for western mountain views. The alignment of this trail also maintains potential to integrate into a longer trail that extends to the north and south.

MATERIAL SELECTION

All materials (e.g., furnishings, vegetation) maintain a focus on fire resistance and general durability for public use. As the park is meant for families and children, their specification also considers elements of safety.



SCALE: 1" = 25'



LITTLE SAGAMORE PARK

SCHEMATIC DESIGN

DESIGN NARRATIVE

Little Sagamore Park's design focuses on providing a fundamental green space for the neighborhood. While it offers active design elements (e.g. a playground), it strives to maintain a light touch that still allows unprogrammed activity to occur; this is particularly emphasized in the open turf area that comprises the northern portion of the park. Indeed, Little Sagamore Park offers a space for neighbors with limited backyards to gather and play.

Planting beds have been incorporated to provide aesthetic interest, but they have been located along pathways (not adjacent homeowner parcels). Seating (particularly picnic tables) has been included sparingly to allow green space to be maintained.

Lastly, given the spatial limitations of the linear spaces that extend east of the main park parcel and their proximity to adjacent neighbors, these areas have been design more for transition rather than gathering. This includes a central pathway and limited seating as well as a focus on xeriscape.

MATERIAL SELECTION

All materials (e.g., furnishings, vegetation) maintain a focus on fire resistance and general durability for public use. As the park is meant for families and children, their specification also considers elements of safety.



SCALE: 1" = 15'



SAGAMORE RIGHT OF WAY SCHEMATIC DESIGN

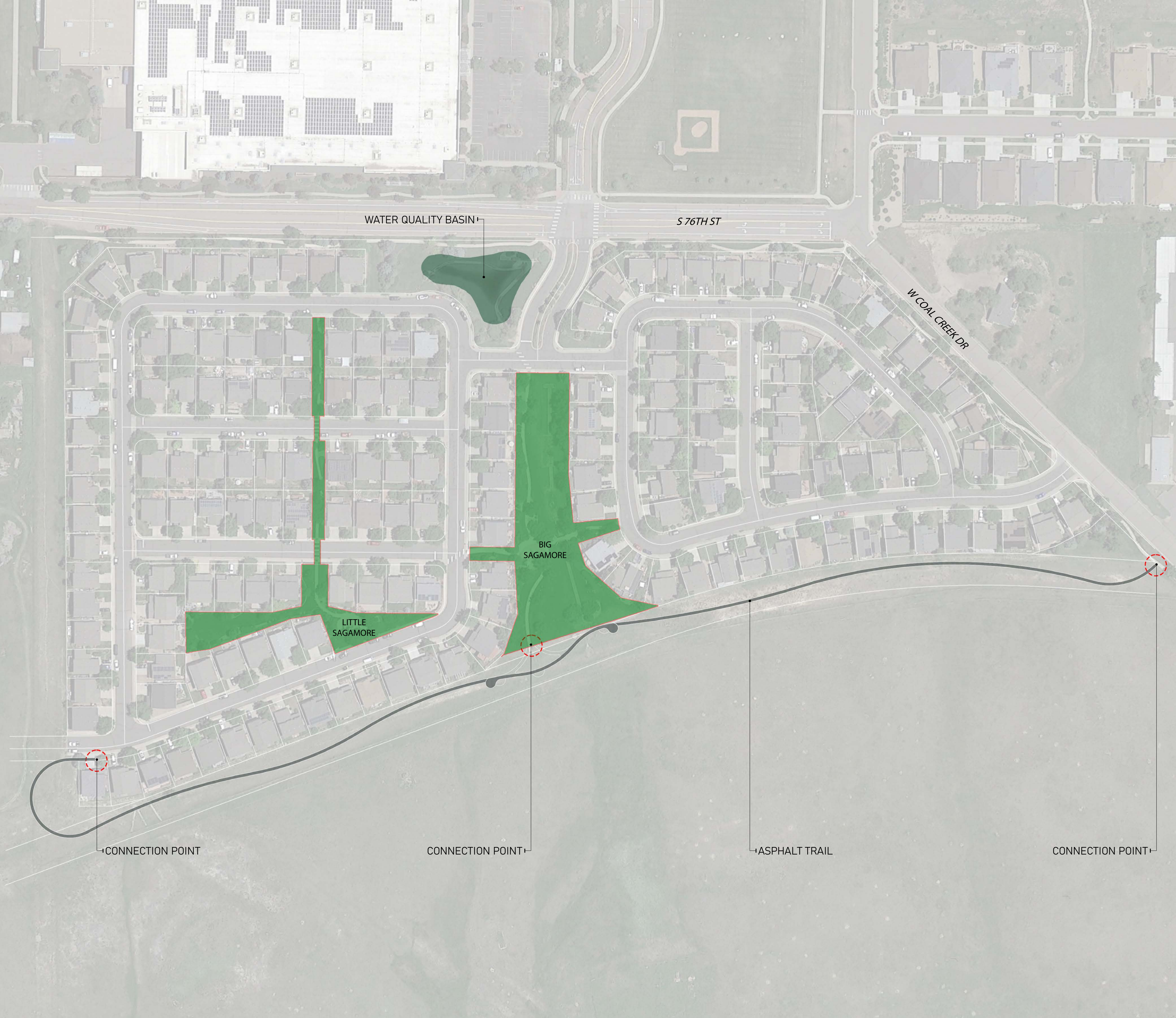
DESIGN NARRATIVE

The Sagamore Right of Way design maintains a light touch that provides buffer aesthetics while also minimizing impact and maintenance requirements. This is particularly evident in the northern segment of the right of way where an Xcel easement exists that poses limitations on design.

Design elements that impact this area most are a detention basin at the entrance to the neighborhood and a paved trail to the west. The former serves a functional purpose but is designed with landscape elements (e.g., ornamental species, boulder accents) to provide an aesthetic amenity. The latter provides connection to a regional trail system and provides direct access to spectacular mountain views.

MATERIAL SELECTION

All materials (e.g., furnishings, vegetation) maintain a focus on fire resistance and general durability for public use. As the park is meant for families and children, their specification also considers elements of safety.



SCALE: 1" = 70'

