

**Project:** Superior North Pool Renovations

**Date:** 2026.04.14

**Project Number:**

**Addendum No.:** Addendum #3

---

**Description:**

Addendum #3 includes changes to electrical and gas-fired water heaters.

**Specification:**

**Drawings:**

**PLUMBING**

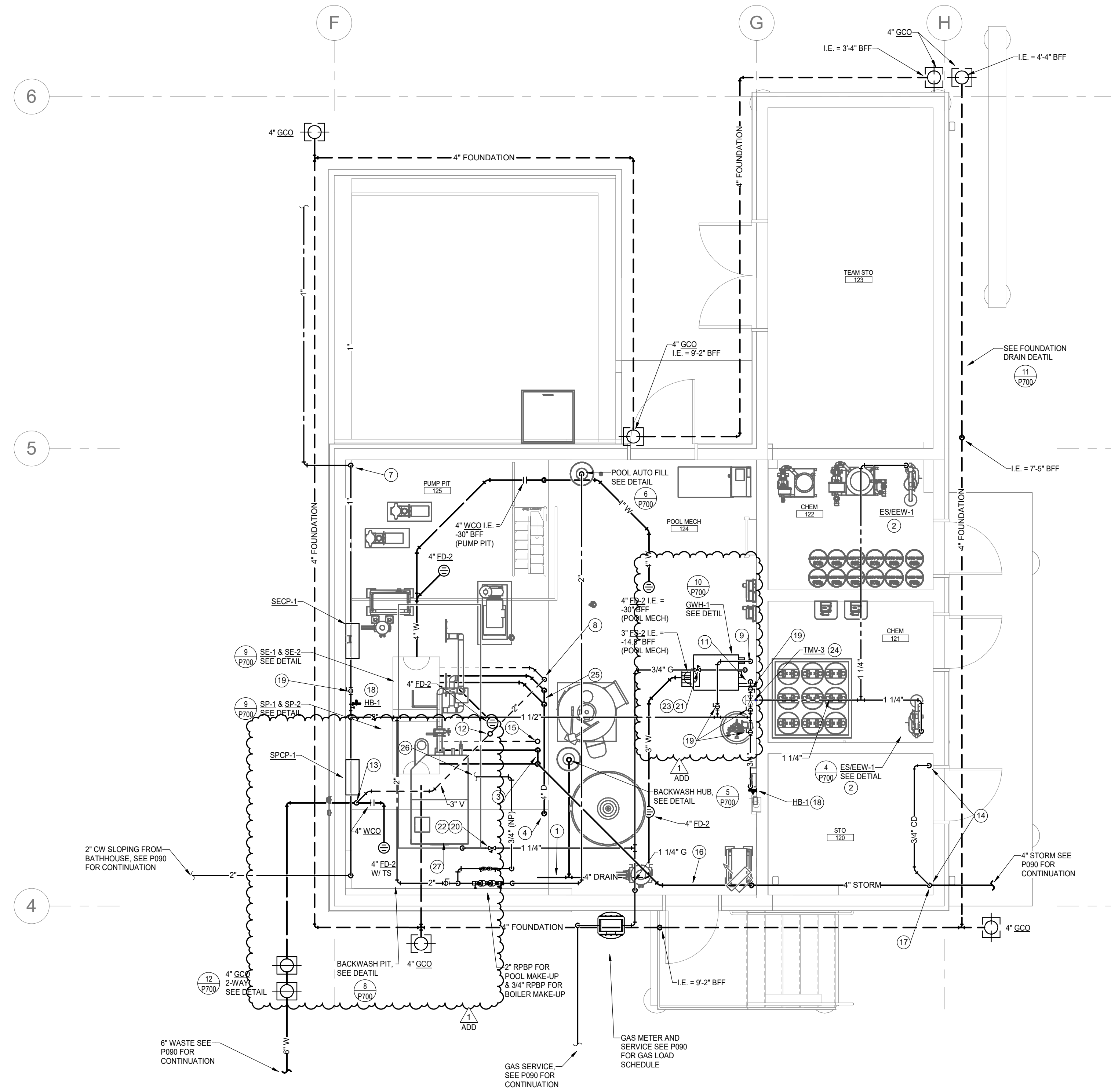
- **Sheet P101c**
  - **REVISED:** Piping Information
- **Sheet P600**
  - **REVISED:** EWH-1 & GWH-1 information.
- **Sheet P700**
  - **REVISED:** Backwash Detail

**ELECTRICAL**

- **Sheet E701**
  - **REVISED:** EWH-1 Electrical Load information.
- **Sheet E702**
  - **REVISED:** EWH-1 circuit information.

**Additional Documents:**

4/1/2026 12:45:32 PM Autodesk Docs://Superior North Pool Renovation/25028-SNP-PLBG\_R24.rvt



**MECH BUILDING PLUMBING KEYNOTES:**

- 1 8" W. DISCHARGE INTO BACKWASH HOLDING TANK.
- 2 1-1/4" TEPID HW TO ES/EEW. ANY PIPING WITHIN CHEMICAL ROOMS SHALL BE SCH. 40 CPVC WITH SOLVENT WELDED FITTINGS FOR CORROSION RESISTANCE.
- 3 (2)2" PUMP DISCHARGES RISE, COMBINE @ 18" AFF. RISE WITH 3" & OFFSET @ STRUCTURE.
- 4 4" W. DOWN AND DISCHARGE TO BACKWASHING HOLDING TANK.
- 5 2" CW DOWN TO AUTOFILL. SEE DETAIL 6P700
- 6 1/2" CW DOWN TO AUTOFILL.
- 7 1" CW DOWN BELOW GRADE AND OFFSET TO FLOOR BOXES ON DECK.
- 8 2" V. RISE & OFFSET AT STRUCTURE.
- 9 1-1/4" CW DOWN TO GWH-1.
- 10 1-1/4" TEPID HW FROM EWH-2 TO EWH-3.
- 11 1-1/4" TEPID HW RISE & OFFSET TO ES/EEW.
- 12 3" V. RISE TO 3" VTR.
- 13 4" W. DOWN, 3" V. RISE FOR FD.
- 14 CONNECT 3/4" CD PIPING TO FCUL. RISE & OFFSET AS HIGH AS POSSIBLE & DROP VERTICALLY INTO STORM PIPING AS SHOWN.
- 15 2" V. RISE TO 3" VTR.
- 16 UPSIZE TO 4" AND SLOPE @ 1.04% FOR GRAVITY FLOW.
- 17 4" DRAIN DOWN & CONNECT TO STORM DRAIN.
- 18 3/4" CW TO HB.
- 19 BALL VALVE. FULL SIZED.
- 20 CONNECT 2-1/2" GAS TO UNIT WITH ACCESSIBLE GAS COCK AND 6" DIRT LEG.
- 21 CONNECT 1-1/2" GS TO UNIT WITH ACCESSIBLE GAS COCK AND 6" DIRT LEG.
- 22 GAS PRV. VENTLESS. 2.000 MBH INPUT AT S.L. 2 PSI. TO 10" WC OUTLET.
- 23 GAS PRV. VENTLESS. 399 MBH INPUT AT S.L. 2 PSI. TO 10" WC OUTLET.
- 24 1-1/4" CW & 1-1/4" HW TO TMV-3. 1-1/4" TEPID HW TO FIXTURES.
- 25 (2)2" PUMP DISCHARGES RISE, COMBINE @ 18" AFF. RISE WITH 3" & OFFSET BELOW GRATING AS HIGH AS POSSIBLE.
- 26 CONNECT 3/4" CW TO BOILER FOR MAKE-UP. COORDINATE LOCATION IN FIELD.
- 27 ROUTE BOILER CONDENSATE TO BACKWASH HOLDING TANK.

NOTE: CONTRACTOR TO PROVIDE VOID FOR PIPING SUPPORT ON BELOW SLAB PIPING WITHIN THIS POOL MECH BUILDING. SEE DETAIL 3P700.

**FIRST FLOOR PLUMBING PLAN - AUX. MECHANICAL BUILDING**

SCALE: 1/4" = 1'-0"



brsarch.com

The Ballard Group, Inc.  
Mechanical Consulting Engineers  
2525 S. Wadsworth Blvd. Suite 200  
Lakewood, CO 80227  
(303) 998-4514

**North Pool Renovation**  
1650 S INDIANA ST, SUPERIOR, CO 80027

DOCUMENT PACKAGE NOT FOR REGULATORY APPROVAL, PERMITTING, OR CONSTRUCTION

Project Number: 2025.009  
Issue: 100% Construction Documents  
Date: 01.09.2026  
Drawn By: JMS  
Checked By: JMB

Revisions:	Description	Date:
ADDENDUM #1		02.25.2026

Sheet title:  
FIRST FLOOR PLUMBING PLAN - AUX. MECH BUILDING

**P101c**

© 2025 Barker Rinker Seacat Architecture



**BARKER  
RINKER  
SEACAT**  
ARCHITECTURE

brsarch.com



The Ballard Group, Inc.  
Mechanical Consulting Engineers  
2525 S. Wadsworth Blvd. Suite 200  
Lakewood, CO 80227  
(303) 998-4514

**North Pool Renovation**  
1650 S INDIANA ST, SUPERIOR, CO 80027

DOCUMENT  
PACKAGE NOT FOR  
REGULATORY  
APPROVAL,  
PERMITTING, OR  
CONSTRUCTION

Project Number: 2025.009  
Issue: 100% Construction Documents  
Date: 01.09.2026

Drawn By: JMS  
Checked By: JMB

Revisions:  
Description Date:  
ADDENDUM #1 02.25.2026

Sheet title:  
PLUMBING SCHEDULES

**P600**

© 2025 Barker Rinker Seacat Architecture

### MISCELLANEOUS PLUMBING FIXTURE SCHEDULE

PLAN CODE	DESCRIPTION	MANUFACTURER	MODEL	FINISH	REMARKS
PET-1	PLUMBING EXPANSION TANK	AMTROL	ST-12C	STEEL	NOTE: 1
TMV-1	THERMOSTATIC MIXING VALVE	BRADLEY	S59-2025	ROUGH BRASS	NOTE: 2
TMV-2	THERMOSTATIC MIXING VALVE	BRADLEY	S59-4000	ROUGH BRASS	NOTE: 3
TMV-3	THERMOSTATIC MIXING VALVE	BRADLEY	S19-2100	ROUGH BRASS	NOTE: 4
<b>NOTES:</b> 1. ASME CONSTRUCTION. 2. ASSE 1017, SET TO 120° F. 3. ASSE 1070, SET TO 110° F. 4. ASSE 1071, SET TO 80° F.					

### WATER HEATER SCHEDULE (GAS-FIRED)

PLAN CODE	MANUFACTURER & MODEL NO.	STORAGE GALLONS	G.P.H. RECOVERY @ 80' RISE	BTUH INPUT @ SEA LEVEL	EFF. FACTOR	FLUE SIZE	TANK SIZE		OPER. WEIGHT	REMARKS
							DIA.	HT.		
GWH-1	LOCHINVAR AWH0400NPM	-	479	399,999	0.99	SEE HVAC	24" X 30-114"	45"	326 LBS	NOTES: 1,2
<b>NOTES:</b> 1. SET TO 120° F. 2. 120/60/1, 1/2 HP										

### PLUMBING FIXTURE SCHEDULE

PLAN CODE	DESCRIPTION	MANUF.	MODEL	COLOR FINISH	FITTINGS	MANUF.	MODEL	COLOR FINISH	REMARKS
WC-1	WATER CLOSET (FLOOR MOUNTED) - 1.28 GPF - BATTERY	AMERICAN STANDARD	2234.001	WHITE	SEAT FLUSH VALVE	OLSONITE	95SSCT ECOS 8111-1.28	WHITE CHROME	NOTES: 8,11
WC-2	WATER CLOSET (ACCESSIBLE) (FLOOR MOUNTED) - 1.28 GPF - BATTERY	AMERICAN STANDARD	3461.001	WHITE	SEAT FLUSH VALVE	OLSONITE	95SSCT ECOS 8111-1.28	WHITE CHROME	NOTES: 9,10,11
UR-1	URINAL (0.125 GPF) (WALL HUNG) - MANUAL	AMERICAN STANDARD	6042.001EC	WHITE	FLUSH VALVE	SLOAN	186-0.125	CHROME	NOTES: 5,12
UR-2	URINAL (0.125 GPF) (WALL HUNG) - MANUAL	AMERICAN STANDARD	6042.001EC	WHITE	FLUSH VALVE	SLOAN	186-0.125	CHROME	NOTES: 5,9
L-1	LAVATORY (ACCESSIBLE) (UNDERCOUNTER) - 0.5 GPM - BATTERY	AMERICAN STANDARD	0495.221	WHITE	FAUCET	CHICAGO	EAF-250	CHROME	NOTES: 1,3
S-1	SINK (ACCESSIBLE) (UNDERMOUNT) - DOUBLE COMP - 1.5 GPM	ELKAY	ELUHAD3618	STAINLESS STEEL	FAUCET	CHICAGO	434-ABCP	CHROME	NOTES: 1,2
MSB-1	MOP SERVICE BASIN	FIAT	MSB2424	WHITE	FAUCET	CHICAGO	445-RC897SXKCP	CHROME	NOTES: 6
EWC-1	ELECTRIC WATER COOLER	ELKAY	EZSTL9WSVRSK	STAINLESS STEEL	-	-	-	-	NOTES: 1,4,5
SH-1	SHOWER (ACCESSIBLE) (1.5 GPM) (1) FIXED AND (1) HANDHELD HEAD	BY G.C.	-	-	VALVE HEAD	BRADLEY MOEN	HN300-HD-SF-ST-A24-NS-AP-BP 52716EP15	CHROME	NOTES: 7
GDU-1	GARBAGE DISPOSAL UNIT	IN-SINK-ERATOR	BADGER 5	-	-	-	-	-	1/2 H.P. 120/60/1
ES/EEW-1	EMERGENCY SHOWER/EYEWASH	HAWES	8336-PVC	PVC	-	-	-	-	-
<b>NOTES:</b> 1. 17 GA. P-TRAP, ANGLE SUPPLIES WITH L.K. STOPS. 2. GRID STRAINER, 1.5 GPM, INSULATION KIT. 3. GRID STRAINER, 0.5 GPM, INSULATION KIT. 4. 15 H.P., 120/60/1. 5. W/ CARRIER. 6. VACUUM BREAKER, CHECK STOPS WITH HG-1. 7. COORDINATE HEAD HEIGHTS WITH ARCH. 8. MOUNT AT 15" AFF. 9. MOUNT AT 17" AFF. 10. HANDLE ON ACCESS SIDE OF TOILET. 11. BATTERY OPERATED FLUSH VALVE. 12. MOUNT @ 24" AFF.									

### PLUMBING FIXTURE CONNECTION SCHEDULE

PLAN CODE	FIXTURE	PIPE SIZE (INCHES, MINIMUM)							REMARKS
		WASTE		VENT (MIN.)	COLD WATER		HOT WATER		
		TRAP & ARM	VERT. DRAIN		SUPPLY (MIN.)	CONNECTION (ACTUAL)	SUPPLY (MIN.)	CONNECTION (ACTUAL)	
WC	WATER CLOSET	INT.	4"	2"	1"	1"	-	-	
UR	URINAL	INT.	2"	1-1/2"	3/4"	3/4"	-	-	
L	LAVATORY	1-1/2"	2"	1-1/2"	1/2"	3/8"	1/2"	3/8"	
S	SINK	1-1/2"	2"	1-1/2"	1/2"	1/2"	1/2"	1/2"	
SH	SHOWER	2"	2"	1-1/2"	1/2"	1/2"	1/2"	1/2"	
EWC/DF	ELEC. WATER COOLER/DRINKING FOUNT.	1-1/2"	2"	1-1/2"	1/2"	3/8"	-	-	
WHHB	WALL HYDRANT	-	-	-	3/4"	3/4"	-	-	
ES/EEW	EMERGENCY SHOWER/ EYEWASH	-	-	-	1-1/4"	-	1-1/4"	-	TEPID WATER
MSB	MOP SERVICE BASIN	3"	3"	1-1/2"	1/2"	1/2"	1/2"	1/2"	

### WATER HEATER SCHEDULE (ELECTRIC)

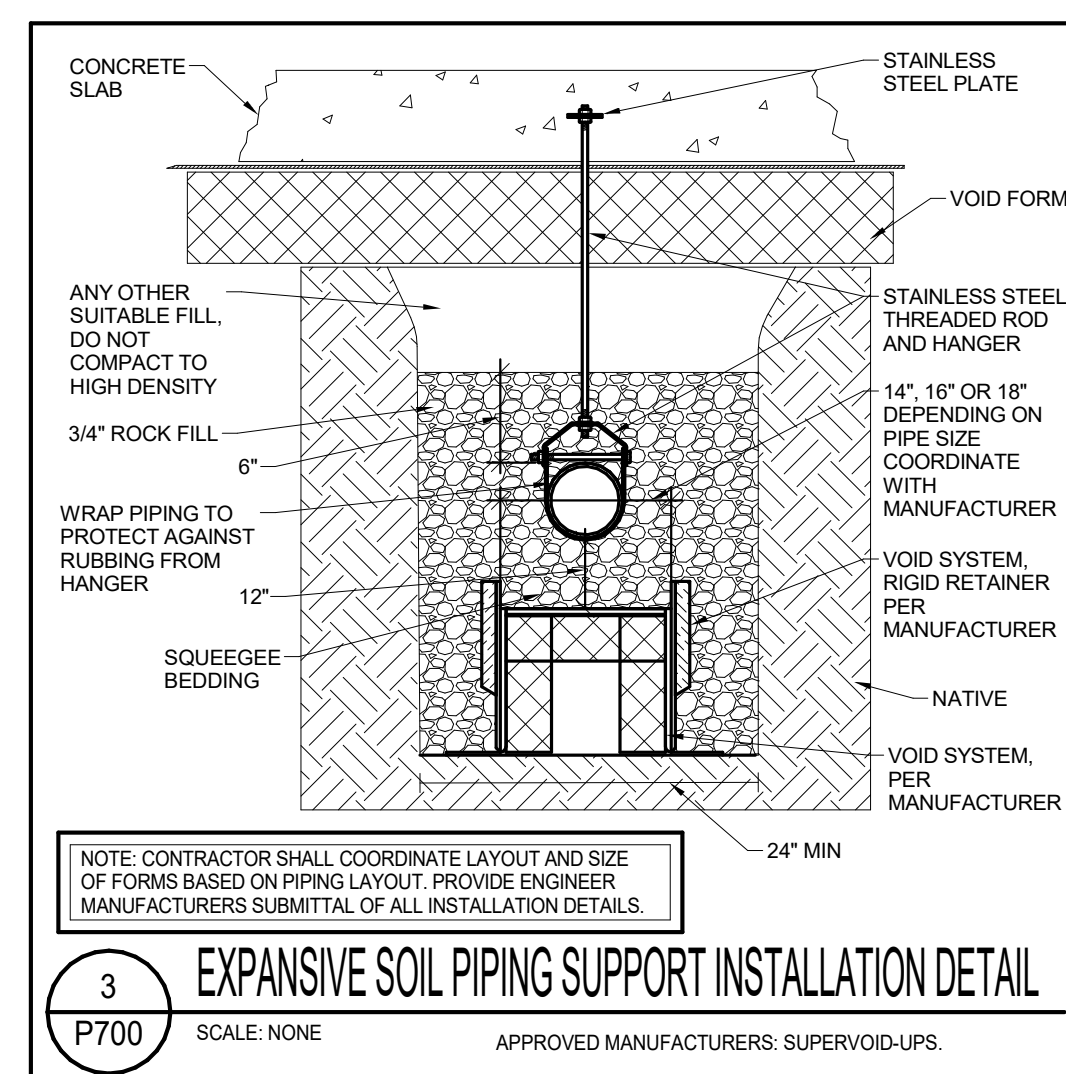
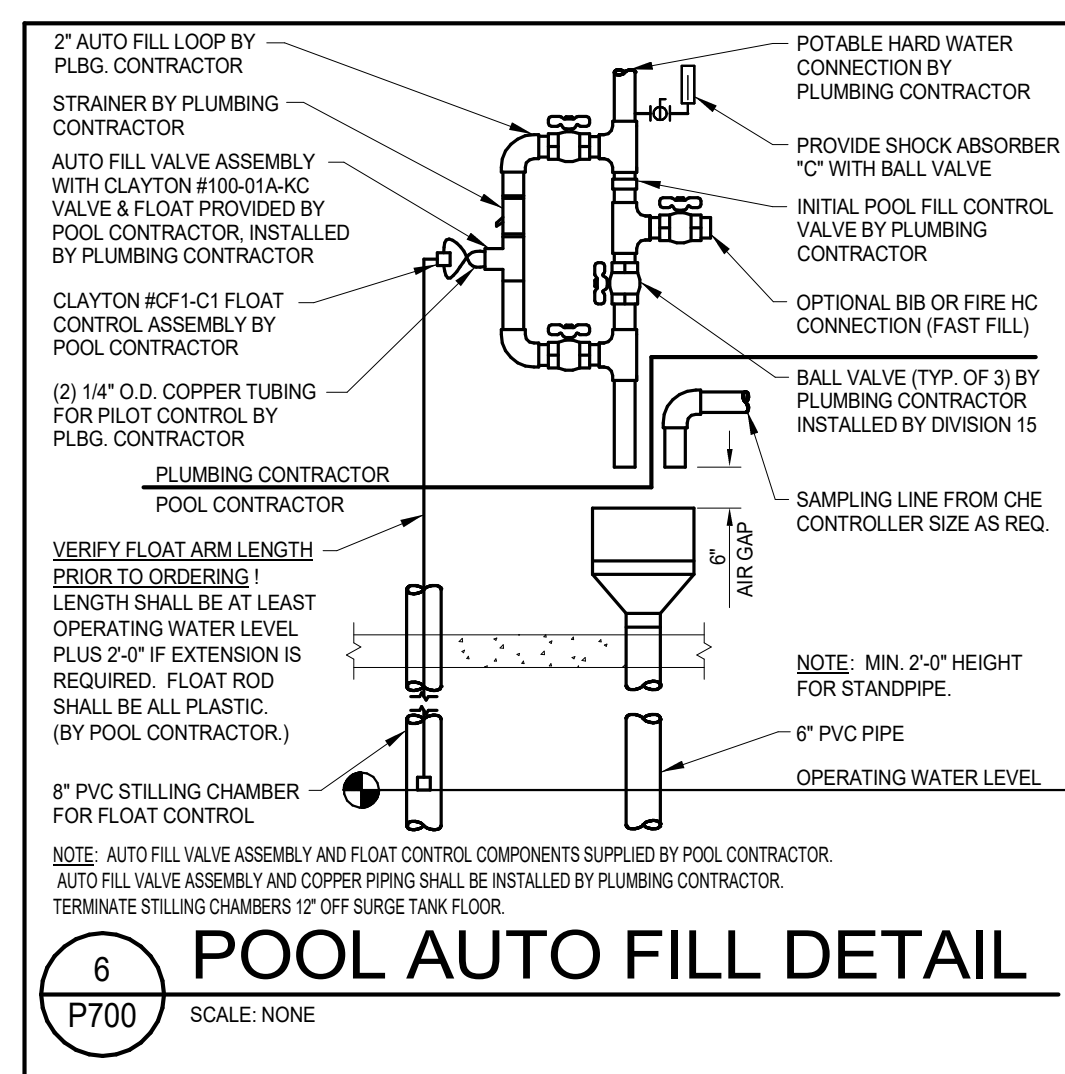
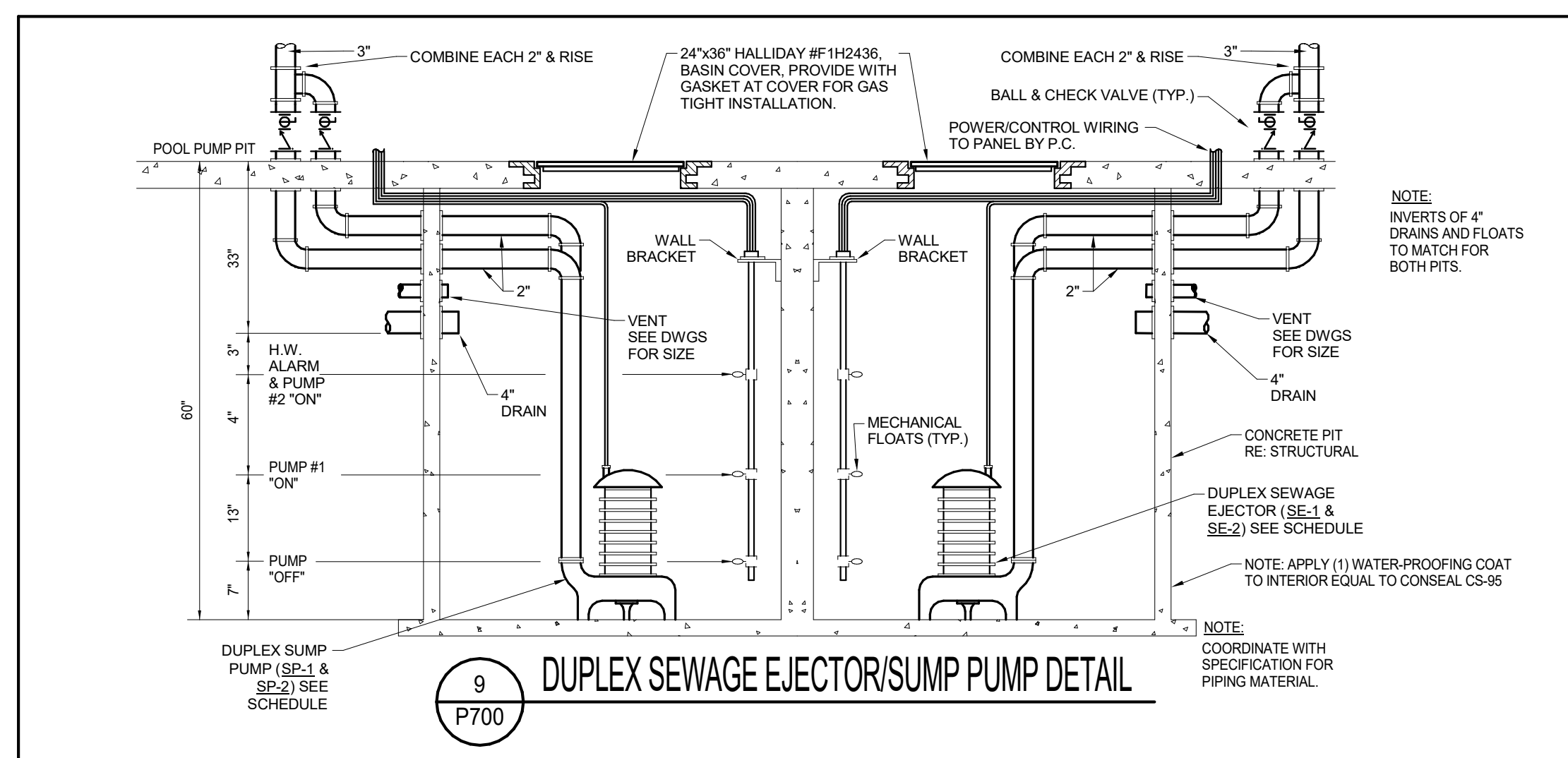
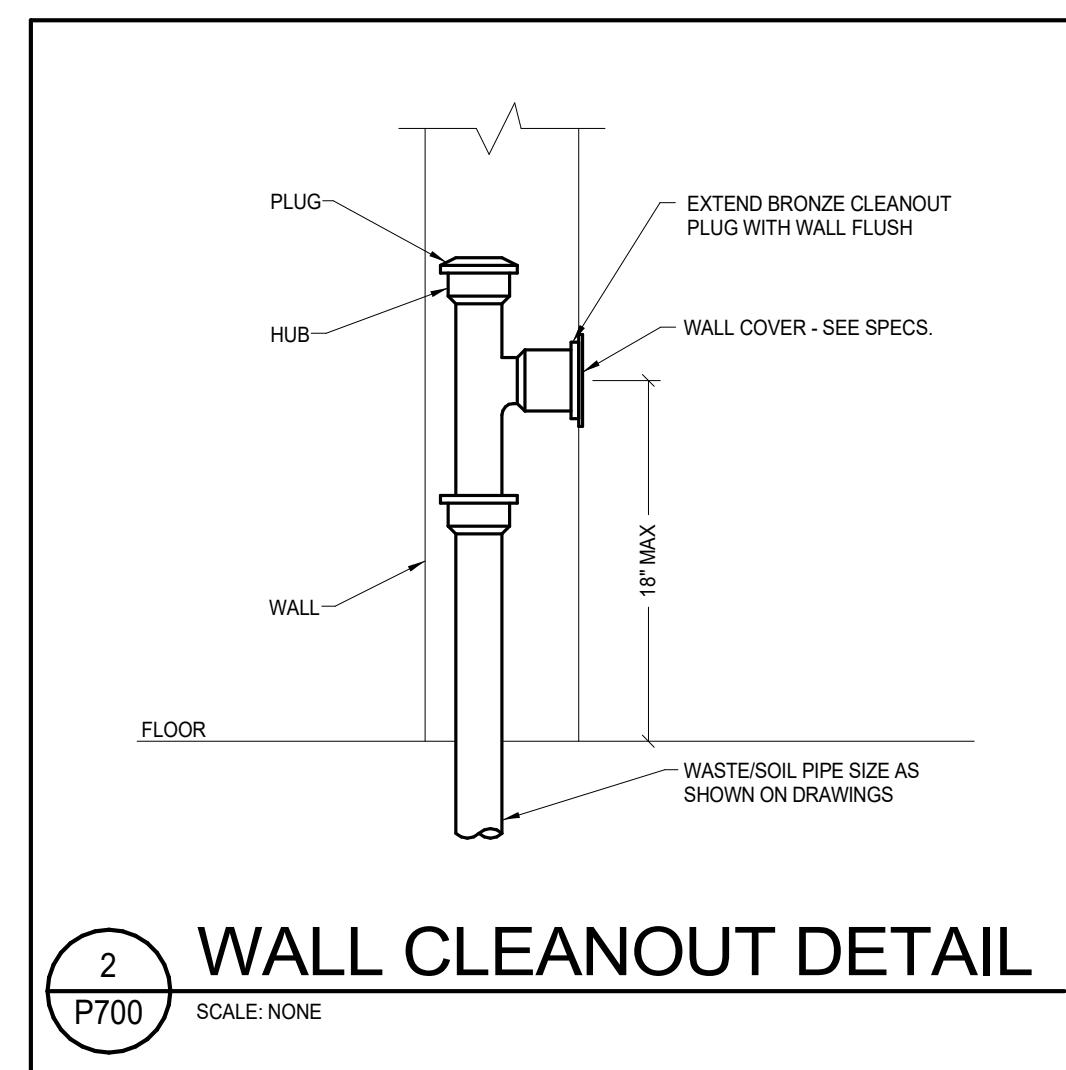
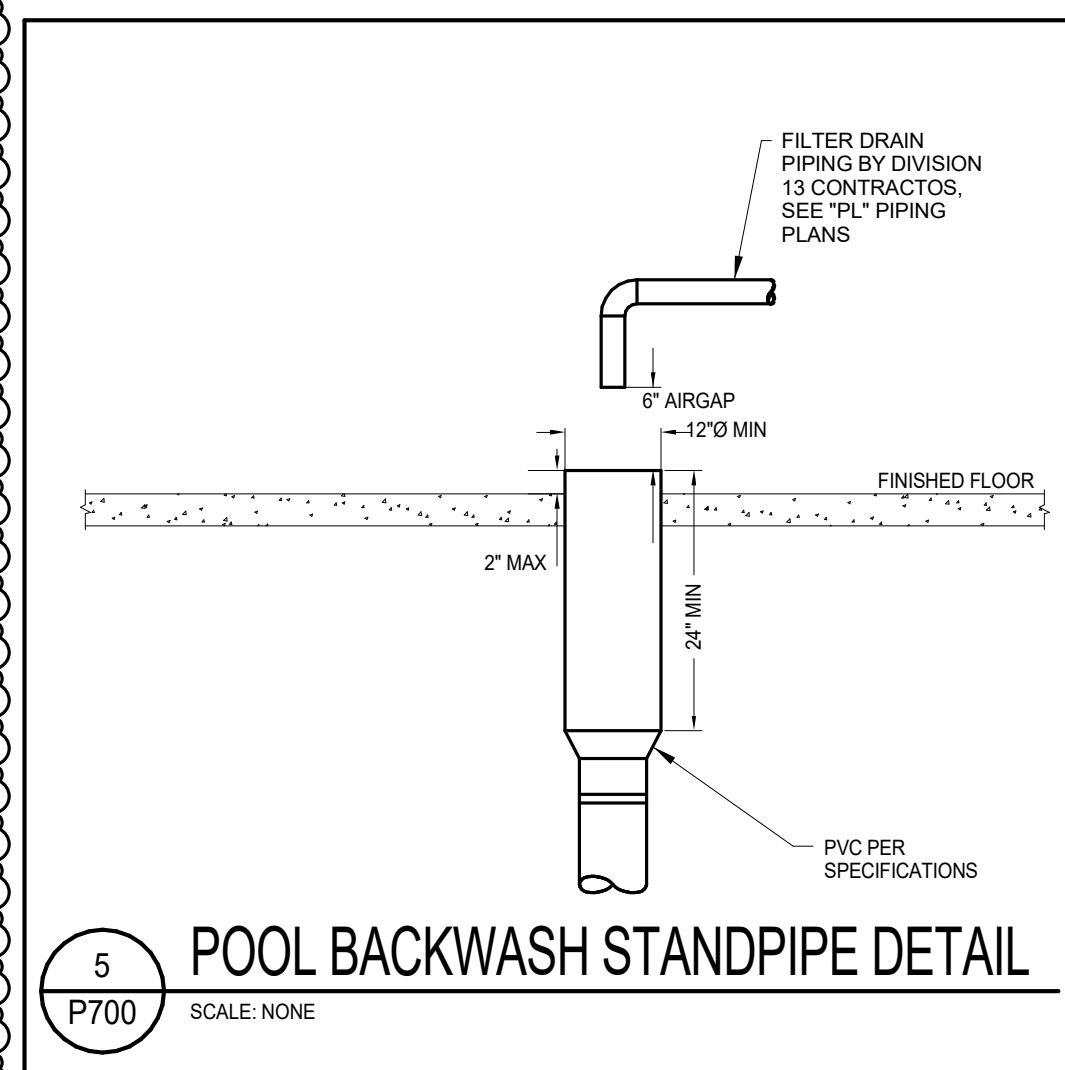
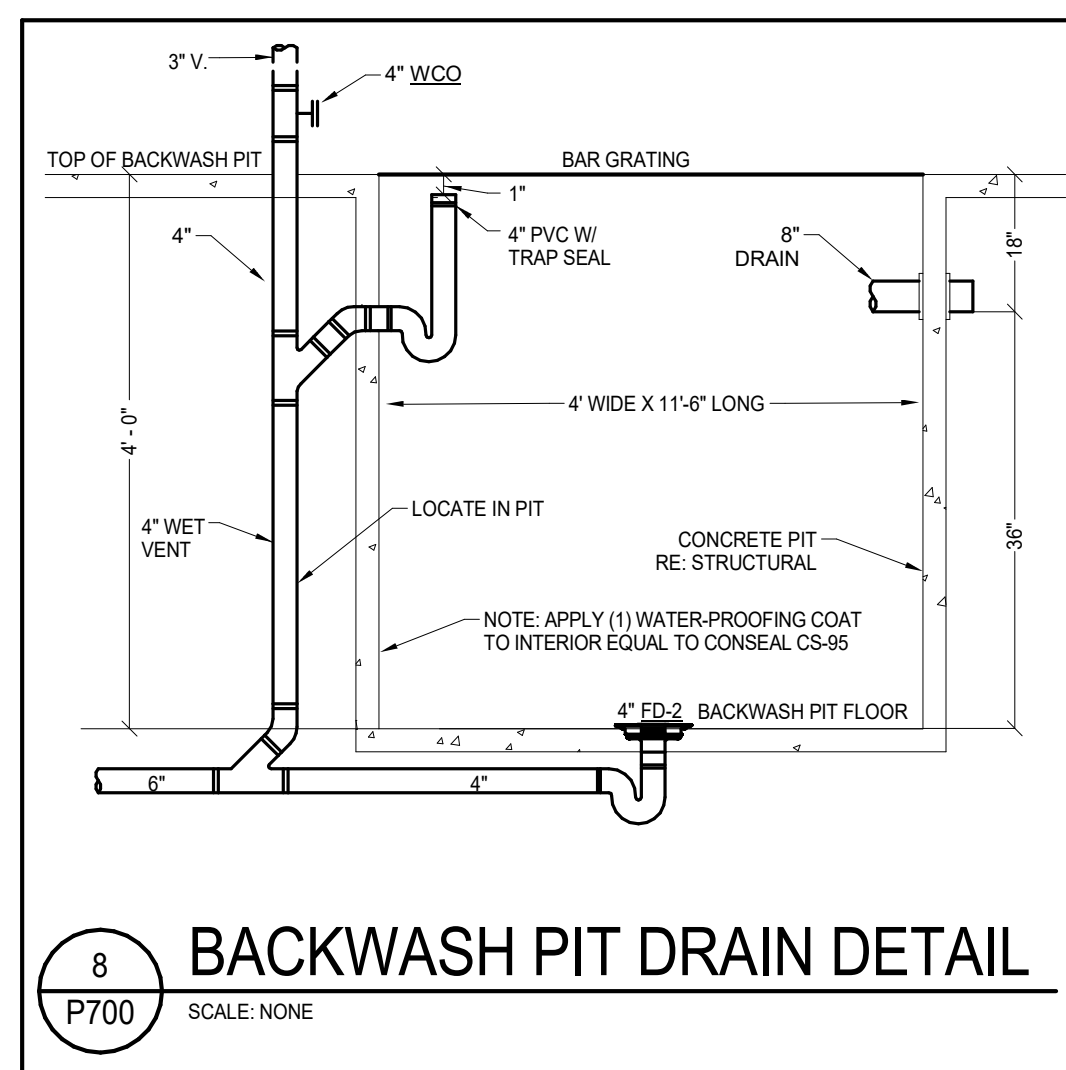
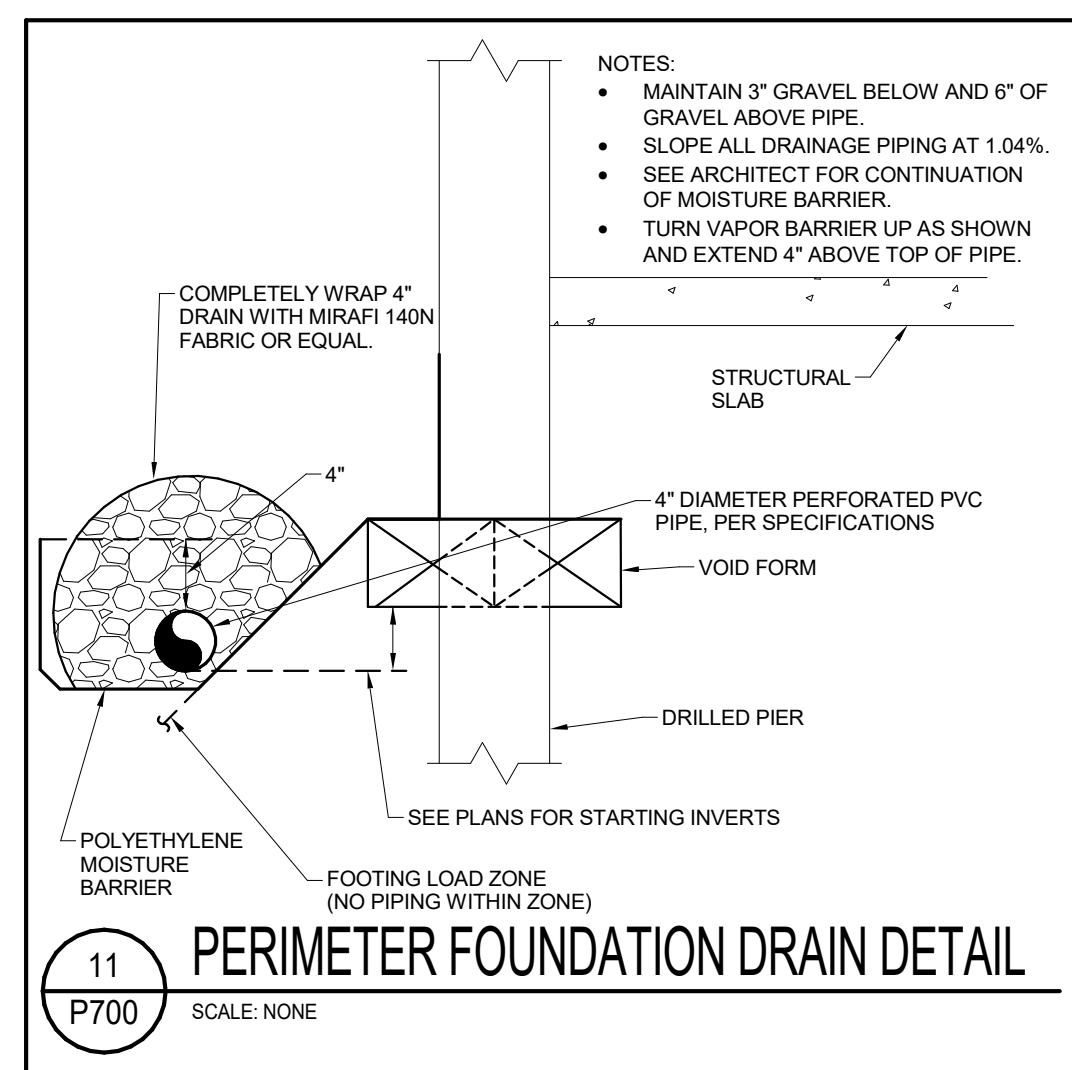
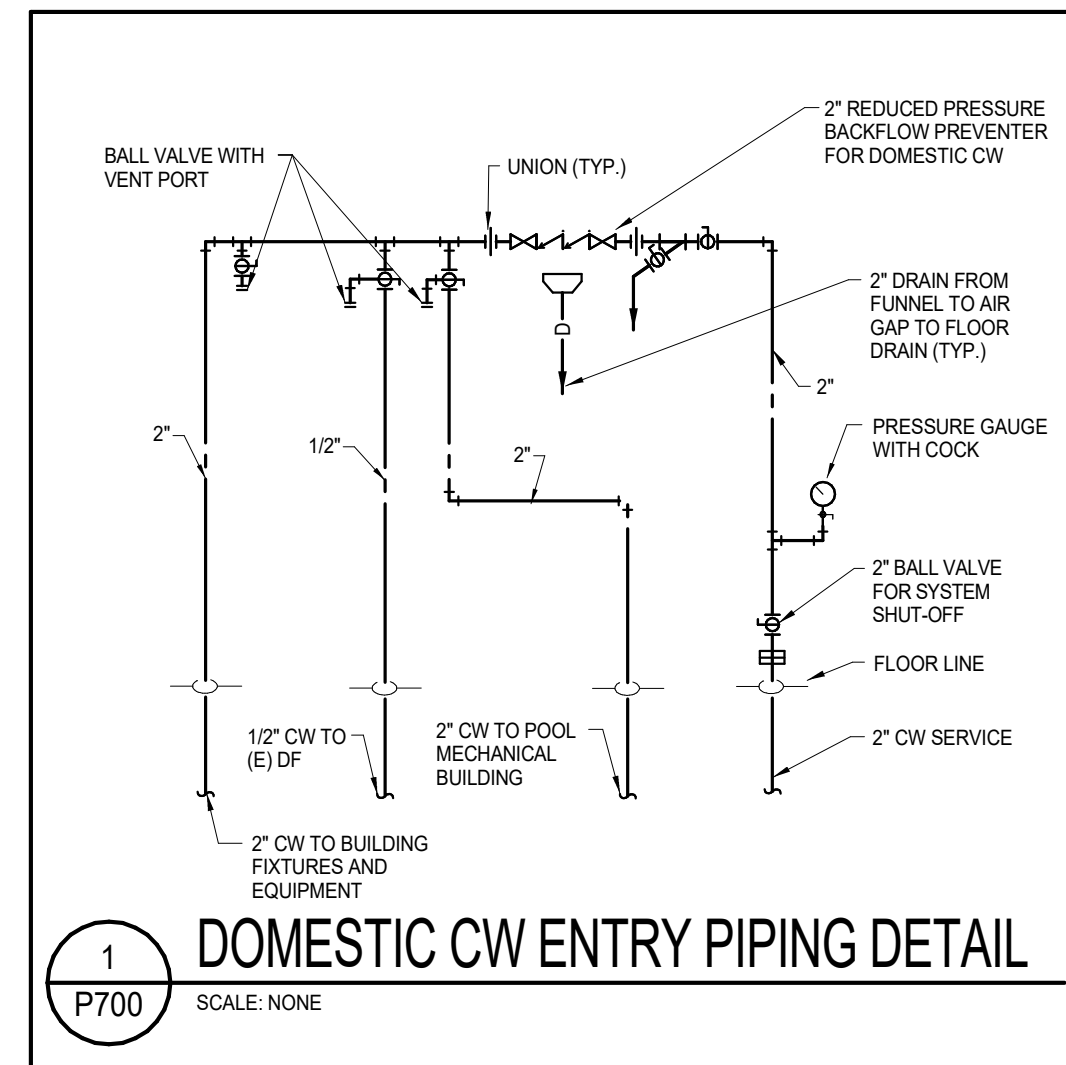
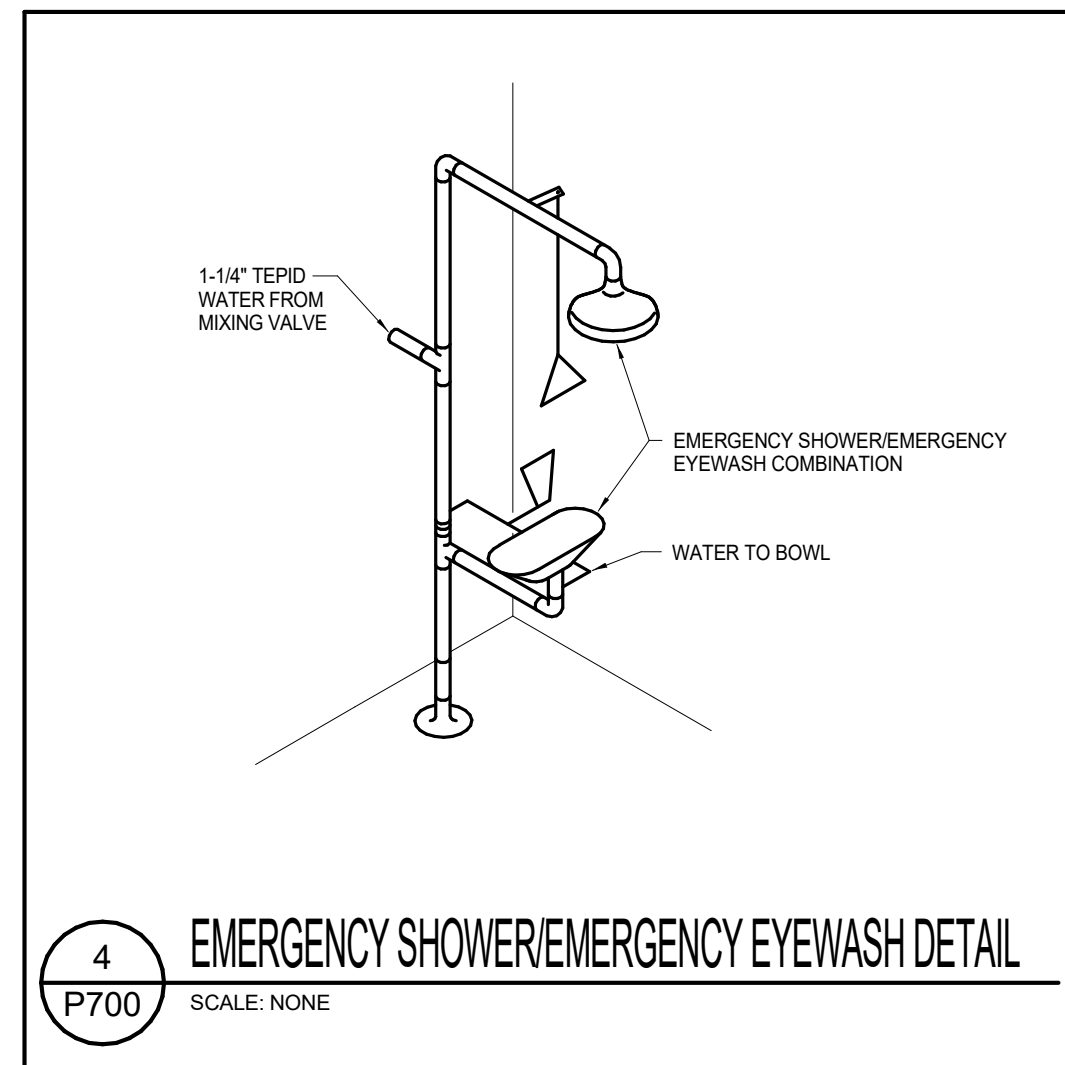
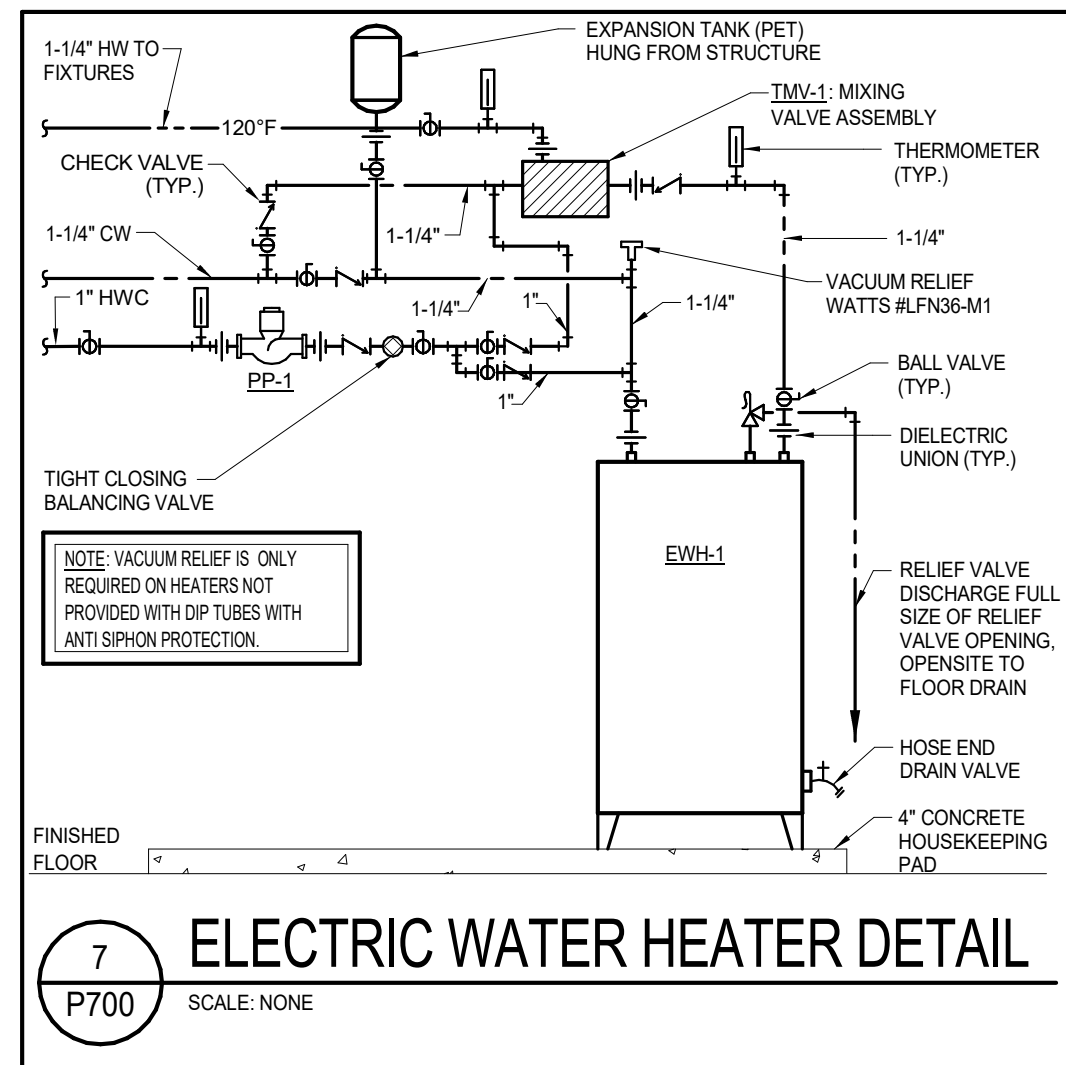
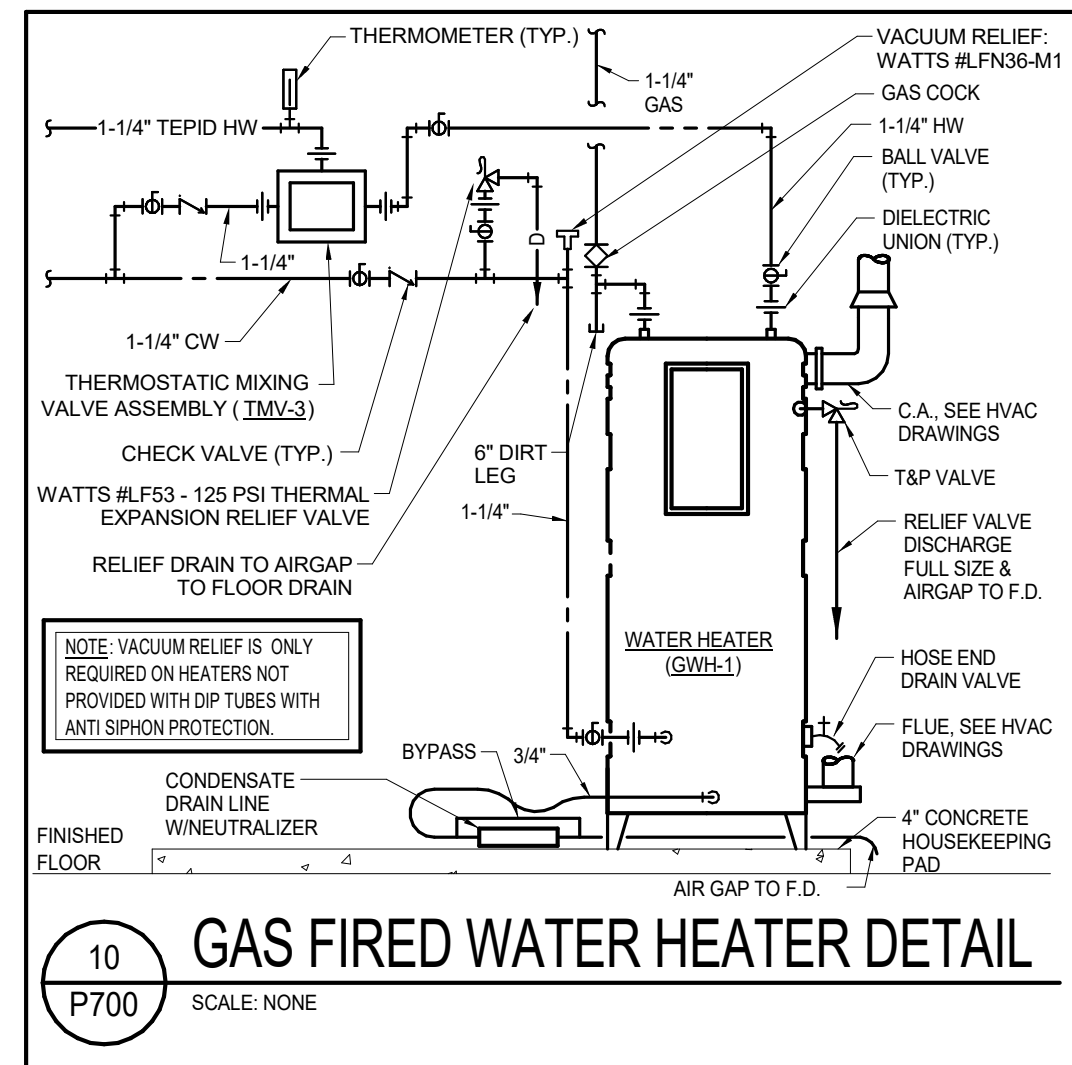
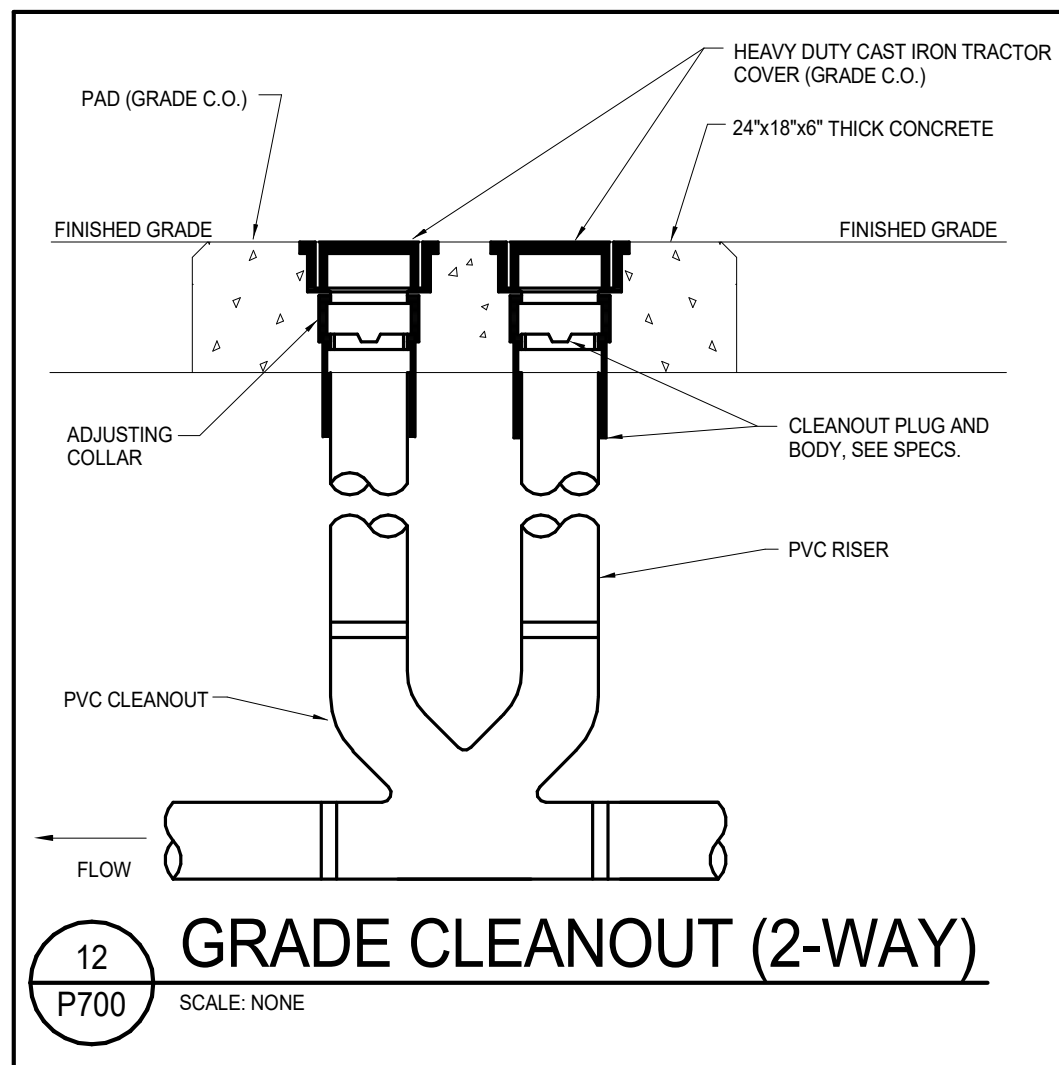
PLAN CODE	MANUFACTURER & MODEL NO.	STORAGE GALLONS	G.P.H. RECOVERY @ 100' RISE	KW INPUT	ELECTRICAL			NO. ELEM.	KW ELEM.	TANK SIZE		OPER. WEIGHT	REMARKS
					VOLTS	CYCLE	PHASE			DIA.	D		
EW-1	A.O. SMITH DVE-120-12	119	49	12.0	208	1	3	3	4	29-1/2"	62-1/4"	1,390 LBS	NOTE: 1,2
EW-2	EEMAX PRO08240	-	-	5.8	208	1	1	1	5.8	11.5" X 8"	3.75"	4.75 LBS	NOTE: 3
<b>NOTES:</b> 1. SET TO 140° F. 2. PROVIDE WITH PET. 3. SET TO 120°F.													

### PLUMBING PUMP SCHEDULE

PLAN CODE	MANUFACTURER & MODEL NO.	TYPE	SERVICE	IMP. DIA. (IN)	GPM	HEAD	% EFF.	ELECTRICAL				VIBRATION ISOLATION	CONTROL	WEIGHT (LBS)	REMARKS
								LOAD	VOLTS	PH	RPM				
PP-1	GRUNDFOS MAGNA3 32-60	IN-LINE	HWC	-	2.0	10.4	-	1.61 A	115	1	-	INTEGRAL	DDC	12	NOTE: 1
SE-1&2	ZOELLER J4282	SUBMERSIBLE	POOL PIT	-	50 EA	15.0	-	1/2 HP	200	1	-	INTEGRAL	SECP-1	96 LBS	NOTE: 2
SP-1&2	ZOELLER J4292	SUBMERSIBLE	FOUND. DRAIN	-	50 EA	28.0	-	1/2 HP	200	1	-	INTEGRAL	SPCP-1	96 LBS	NOTE: 2
<b>NOTES:</b> 1. DDC, OCCUPIED/UNOCCUPIED. 2. DUPLEX CONTROL PANEL, ALTERNATOR, HW ALARM, FLOATS, POWER WIRING TO PANEL BY EC, CONTROL WIRING BY PC, (3) CONTROL CIRCUITS, (1) EA FOR PUMPS AND (1) FOR PANEL.															

4/1/2026 12:45:32 PM Autodesk Docs://Superior North Pool Renovation/25028-SNP-PLBG\_R24.rvt

4/1/2026 12:45:33 PM Autodesk Docs://Superior North Pool Renovation/25028-SNP-PLBG\_R24.rvt



**BARKER RINKER SEACAT**  
ARCHITECTURE

brsarch.com

The Ballard Group, Inc.  
Mechanical Consulting Engineers  
2525 S. Wadsworth Blvd. Suite 200  
Lakewood, CO 80227  
(303) 998-4514

**North Pool Renovation**  
1650 S INDIANA ST, SUPERIOR, CO 80027

DOCUMENT PACKAGE NOT FOR REGULATORY APPROVAL, PERMITTING, OR CONSTRUCTION

Project Number: 2025.009  
Issue: 100% Construction Documents  
Date: 01.09.2026  
Drawn By: JMS  
Checked By: JMB

Revisions:	Description	Date:
ADDENDUM #1		02.25.2026

Sheet title:  
PLUMBING DETAILS

**P700**

© 2025 Barker Rinker Seacat Architecture

## MECHANICAL EQUIPMENT CONNECTIONS SCHEDULE

### GENERAL NOTES:

- REFER TO MECHANICAL FLOOR PLANS FOR EQUIPMENT QUANTITIES.
- REFER TO CONDUCTOR SCHEDULE FOR CONDUCTOR AND CONDUIT SIZES. ALL CONDUCTORS SHALL BE COPPER.
- COORDINATE EXACT LOCATION OF EQUIPMENT WITH DIVISIONS 21, 22 AND 23 CONTRACTOR PRIOR TO BEGINNING ANY ELECTRICAL ROUGH-IN.
- COORDINATE OVERCURRENT PROTECTION DEVICE AND FEEDER SIZES WITH APPROVED SHOP DRAWINGS PRIOR TO BEGINNING ANY ELECTRICAL ROUGH-IN.
- WHEN DISCONNECTING MEANS ARE NOT PROVIDED WITH THE EQUIPMENT, PROVIDE WEATHERPROOF DISCONNECT SWITCHES IN NEMA 3R ENCLOSURES FOR ALL EQUIPMENT THAT IS LOCATED ON THE ROOF OR ON THE EXTERIOR OF THE BUILDING.
- BRANCH CIRCUIT SIZES DO NOT ACCOMMODATE FOR VOLTAGE DROP. REFER TO SPECIFICATIONS FOR INFORMATION ON ALLOWABLE VOLTAGE DROP PERMITTED AND UP-SIZE CONDUCTORS AND CONDUITS AS NECESSARY TO COMPLY WITH REQUIREMENTS.
- REFER TO "EQUIPMENT CONNECTIONS AND COORDINATION" SPECIFICATION FOR FURTHER REQUIREMENTS.
- "STO" INDICATES A MOTOR RATED TOGGLE SWITCH WITH THERMAL OVERLOADS.
- "C&P" INDICATES A CORD AND PLUG CONNECTION.

### KEY NOTES:

- UNIT IS PROVIDED WITH AN INTEGRAL DISCONNECT SWITCH. WHERE THE DISCONNECT SWITCH IS THE FUSIBLE TYPE, PROVIDE A FUSE SIZED AS RECOMMENDED BY THE EQUIPMENT MANUFACTURER.
- EQUIPMENT IS FED ELECTRICALLY FROM OUTDOOR UNIT. PROVIDE LOCAL DISCONNECT SWITCH FOR INDOOR UNIT AS INDICATED.
- UNIT INCLUDES 120V, 1 PHASE CONDENSATE PUMP. PROVIDE SEPARATE ELECTRICAL CONNECTION FROM NEAREST CONVENIENCE RECEPTACLE CIRCUIT TO PUMP AND INCLUDE 20A1P DISCONNECT SWITCH WITH THERMAL OVERLOADS AS LOCAL DISCONNECTING MEANS AT PUMP.
- PROVIDE SWITCHED RECEPTACLE IN ACCESSIBLE LOCATION BELOW SINK AND CONTROL VIA SWITCH INDICATED ON PLAN.
- COORDINATE GFCI RECEPTACLE LOCATION SO THAT IT IS CONCEALED FROM VIEW, BUT REMAINS READILY ACCESSIBLE.

KEY	ITEM	LISTED LOAD			EQUIV. LOAD (VA)	VOLTS	PH	BRANCH CIRCUIT WIRING AND CONDUIT	DISCONNECT	FUSE	KEY NOTES
		HP	MCA/FLA	KW							
CU-1	SPLIT SYSTEM OUTDOOR UNIT #1 (BATHHOUSE)		38		7904	208	1	60.2G	INTEGRAL	NA	1
EF-1	EXHAUST FAN #1 (MENS RR)	1/6			528	120	1	20.2G	INTEGRAL	NA	1
EF-2	EXHAUST FAN #2 (MENS SHOWER)	1/15			49	120	1	20.2G	INTEGRAL	NA	1
EF-3	EXHAUST FAN #3 (FAMILY CHANGING)	1/15			49	120	1	20.2G	INTEGRAL	NA	1
EF-4	EXHAUST FAN #4 (MECH ROOM)	1/15			49	120	1	20.2G	INTEGRAL	NA	1
EF-5	EXHAUST FAN #5 (ALL SEASON RR)	1/15			49	120	1	20.2G	INTEGRAL	NA	1
EF-6	EXHAUST FAN #6 (WOMENS RR)	1/6			528	120	1	20.2G	INTEGRAL	NA	1
EF-7	EXHAUST FAN #2 (MENS SHOWER)	1/15			49	120	1	20.2G	INTEGRAL	NA	1
EF-8	EXHAUST FAN #8 (GUARDS/FIRST AID)	1/6			528	120	1	20.2G	20A1P STO	NA	1
EF-9	EXHAUST FAN #9 (PUMP ROOM)	1/3			864	120	1	20.2G	INTEGRAL	NA	1
EF-10	EXHAUST FAN #10 (CHEMICAL ROOM)	1/4			696	120	1	20.2G	INTEGRAL	NA	1
EF-11	EXHAUST FAN #11 (CHEMICAL ROOM)	1/4			696	120	1	20.2G	INTEGRAL	NA	1
EF-12	EXHAUST FAN #12 (STORAGE ROOMS)	1/6			528	120	1	20.2G	INTEGRAL	NA	1
EF-13	EXHAUST FAN #13 (STORAGE/ELEC)	1/15			49	120	1	20.2G	INTEGRAL	NA	1
EUH-1	ELECTRIC UNIT HEATER #1 (PUMP ROOM)		15.9		5728	208	3	20.3G	30A3P	NA	
EWC-1	ELECTRIC WATER COOLER #1	1/5			600	120	1	20.2G	C&P	NA	5
EWH	ELECTRIC WALL HEATER			2.00	2004	120	1	30.2G	INTEGRAL	NA	1
EWH-1	ELECTRIC WATER HEATER #1			12.00	12000	208	3	50.3G	60A3P	NA	
EWH-2	ELECTRIC WATER HEATER #2			5.82	5824	208	1	40.2G	60A2P	NA	
FCU-1	SPLIT SYSTEM INDOOR UNIT #1 (BATHHOUSE)		38		7904	208	1	60.2G	60A2P	NA	2,3
GD-1	GARBAGE DISPOSAL #1	1/2			1176	120	1	20.2G	C&P	NA	4
GWH-1	GAS WATER HEATER #1		9.5		1140	120	1	20.2G	20A1P	NA	
PP-1	RECIRCULATION PUMP #1	1/6			528	120	1	20.2G	20A1P STO	NA	
SE-1	SEWAGE EJECTOR #1	1/2			1176	120	1	20.2G	20A1P STO	NA	
SE-2	SEWAGE EJECTOR #2	1/2			1176	120	1	20.2G	20A1P STO	NA	
SECP-1	SEWAGE EJECTOR CONTROL PANEL #1		5		600	120	1	20.2G	20A1P	NA	
SP-1	SUMP PUMP #1	1/2			1176	120	1	20.2G	20A1P STO	NA	
SP-2	SUMP PUMP #2	1/2			1176	120	1	20.2G	20A1P STO	NA	
SPCP-1	SUMP PUMP CONTROL PANEL #1		5		600	120	1	20.2G	20A1P	NA	

## LIGHT FIXTURE SCHEDULE

### GENERAL NOTES:

- INTERIOR LUMINAIRES SHALL BE LED WITH A CCT OF 3500K AND A MINIMUM 90 CRI, UON.
- DIMMING TECHNOLOGY DEFINITIONS: 0-10V (2-WIRE DC, PURPLE/GRAY WIRES); MLV = MAGNETIC LOW VOLTAGE (FORWARD PHASE, LEADING EDGE, TRIAC); ELV = ELECTRONIC LOW VOLTAGE (REVERSE PHASE, TRAILING EDGE); DALI (DIGITAL ADDRESSABLE LIGHTING INTERFACE); DMX (DIGITAL MULTIPLEX); L = LUTRON ECOSYSTEM; NA = NON-DIM.
- LUMINAIRE FINISHES SHALL BE SELECTED FROM MANUFACTURERS STANDARD (UNLESS NOTED AS A CUSTOM FINISH), AS SELECTED BY THE ARCHITECT DURING SUBMITTAL REVIEW. CONFIRM ALL SELECTIONS IN WRITING PRIOR TO RELEASING ANY ORDER.
- FOR FIXTURES WHERE MOUNTING HEIGHT IS NOT INDICATED ON THESE ELECTRICAL DRAWINGS, COORDINATE WITH ARCHITECTURAL AND INTERIOR PLANS, ELEVATIONS, AND DETAILS FOR MOUNTING HEIGHTS OF ALL WALL-MOUNT AND PENDANT-MOUNT LUMINAIRES. IF HEIGHT IS NOT INDICATED ON THOSE DOCUMENTS, COORDINATE HEIGHT WITH THE ARCHITECT IN WRITING PRIOR TO ROUGH-IN.
- RECESS DEPTH/OAH (OVERALL HEIGHT) DIMENSION CORRESPONDS TO THE LUMINAIRE LISTED UNDER THE MANUFACTURER AND MODEL COLUMN. IT IS THE RESPONSIBILITY OF THE EC TO VERIFY THAT LUMINAIRES LISTED UNDER THE ALTERNATE MANUFACTURER COLUMN WILL NOT ENCOUNTER INSTALLATION ISSUES DUE TO A DIFFERENCE IN OVERALL DEPTH OR HEIGHT.
- LUMINAIRE MOUNTING: CONFIRM EACH CEILING TYPE (GRID WIDTH/TYPE, GYPSUM CEILING, WOOD, METAL, ETC.) BEFORE ORDERING LUMINAIRES. CONTRACTOR IS RESPONSIBLE TO ORDER THE CORRECT MOUNTING HARDWARE (BAR HANGERS, SURFACE-MOUNT KIT, FLANGE KIT, ETC.). PROVIDE FIXTURE THAT HAS THE APPROPRIATE FLANGE FOR THE TYPE OF CEILING IN WHICH IT WILL BE INSTALLED.
- FURNISH ALL NECESSARY LUMINAIRE COMPONENTS TO FACILITATE A COMPLETE AND FUNCTIONAL LIGHTING SYSTEM. I.E. TRACK LIGHTING AND LED TAPE LIGHT CONNECTORS, DRIVERS, HANGERS, END FEEDS, ETC.
- STRUCTURALLY SUPPORT LUMINAIRES WEIGHING MORE THAN 50 POUNDS INDEPENDENT FROM THE OUTLET BOX, PER NEC 314.27.
- LED TAPE INSTALL USING ADHESIVE BACKING: PREP THE MOUNTING SURFACE PER MANUFACTURERS RECOMMENDATIONS. AT MINIMUM, CLEAN WITH 50/50 ALCOHOL MIX AND APPLY 3M PRIMER 94. AFTER INSTALL, APPLY SMALL AMOUNT OF EPOXY UNDER EACH END OF EACH RUN AND PLACE MOUNTING CLIPS EVERY 12".
- LISTED ALTERNATE MANUFACTURERS: ALTERNATE FIXTURE SHALL PROVIDE EQUAL OR BETTER DELIVERED LUMEN OUTPUT, EFFICACY, DISTRIBUTION, WARRANTY, ETC. THAN THE SPECIFIED MODEL. INCLUSION OF MANUFACTURER NAME IN ALTERNATE MANUFACTURER COLUMN DOES NOT IMPLY THAT ALL MANUFACTURERS LISTED OFFER AN ACCEPTABLE ALTERNATE TO THE SPECIFIED FIXTURE.
- EC SHALL PROVIDE ALL LIGHTING PLANS, LIGHT FIXTURE SCHEDULE, LIGHTING CONTROL DIAGRAM(S), AND LIGHTING CONTROLS SCHEDULE(S), LIGHTING SPECIFICATIONS, AND RELEVANT LIGHTING DETAILS TO ALL DISTRIBUTORS PROVIDING PRICING.
- PROVIDE SILICONE FILLED WATERPROOF CONNECTORS FOR ALL EXTERIOR LUMINAIRES.
- INSTALL LUMINAIRES SO THAT DIFFUSER, LAMP/SOURCE ORIENTATION, OR OTHER DEFINING FEATURE OF ADJACENT FIXTURES IS ALIGNED, WHERE APPLICABLE.
- REFER TO E800 DRAWINGS FOR CONCRETE BASE DETAIL.
- REFER TO SPECIFICATIONS FOR FURTHER LIGHTING REQUIREMENTS.

### KEY NOTES:

- PROVIDE NUMBER OF LED ROLLS REQUIRED TO ACCOMMODATE LENGTH OF FIXTURE SHOWN ON PLAN. LED STRIP IS FIELD CUTTABLE. PROVIDE NUMBER OF SPECIFIED DIMMABLE DRIVERS REQUIRED TO ACCOMMODATE LENGTH OF LED RIBBON SHOWN ON PLAN. FIELD VERIFY LENGTH OF FIXTURE REQUIRED PRIOR TO BEGINNING INSTALLATION TO ENSURE THAT FIXTURE IS RUN WITHIN 3" MAXIMUM OF END OF COVE RUN. PROVIDE CHANNEL COVER.
- EXIT SIGNS: PROVIDE NUMBER OF FACES, MOUNTING TYPE, AND DIRECTIONAL ARROWS AS INDICATED ON THE PLANS.

KEY	DESCRIPTION	LAMPS	(VA)	MANUFACTURER	MODEL	ALTERNATE MANUFACTURER	VOLTAGE	KEY NOTES	MOUNTING	RECESS DEPTH/OAH
B1-5	2'X5' LINEAR RECESSED, PERIMETER LED, WITH ACRYLIC LENS, LENGTH SHOWN ON PLANS, DIM0-10V	500 LM/FT	28	AXIS	SCPLED-500-90-35K-FL-S(L)-W-UNV-DP-1	FINELITE, PRUDENTIAL	120		RECESSED	3-1/16"
B1-8	2'X8' LINEAR RECESSED, PERIMETER LED, WITH ACRYLIC LENS, LENGTH SHOWN ON PLANS, DIM0-10V	500 LM/FT	44	AXIS	SCPLED-500-90-35K-FL-S(L)-W-UNV-DP-1	FINELITE, PRUDENTIAL	120		RECESSED	3-1/16"
C1	COVE LIGHT, TAPE IN LENSED EXTRUSION, 1% DIM0-10V	346 LM/FT	4	LUMINII	KS-(LENGTH)-HE48MO-35K-HF-A-SA-(FEED); PDCU-D	ACOLYTE, CALI, DIODE LED	120	1	COVE	1" OAH
F1	6" ROUND DOWNLIGHT, 60 DEGREE, WHITE TRIM, 1% DIM0-10V, WET LOCATION LISTED	1729 LM	20	GOTHAM	EV06SH-35/20-DFR-SOL-MVOLT-EZ1	ALW, COOPER, SIGNIFY	120		RECESSED	7-1/2"
F2	4" ROUND DOWNLIGHT, 60 DEGREE BEAM, WHITE TRIM, 1% DIM0-10V, DAMP LOCATION LISTED	1684 LM	20	GOTHAM	EV04SH-35/20-DFR-SOL-MVOLT-EZ1	ALW, COOPER, SIGNIFY	120		RECESSED	6-5/8"
F2E	4" ROUND DOWNLIGHT, 80 DEGREE BEAM, WHITE TRIM, 1% DIM0-10V, DAMP LOCATION LISTED, WITH INTEGRAL EMERGENCY BATTERY PACK	1684 LM	20	GOTHAM	EV04SH-35/20-DFR-SOL-MVOLT-EZ1-ELR	ALW, COOPER, SIGNIFY	120		RECESSED	6-5/8"
K1	INDIRECT LED WALL MOUNTED FLOOD LIGHT, 1% DIM0-10V	2446 LM	20	LIGMAN LIGHTING	UVK-30021-20W-W-W40-01-120/277V-DIM	COLE LIGHTING, IN-PERFORMANCE, KIM LIGHTING	120		SURFACE - WALL	4.3" OAH
P1	SINGLE HEAD, LED POLE, TYPE IV DISTRIBUTION, ROUND POLE, 4000K CCT	25184 LM	154	SIGNIFY	P26-A07-840-T4M-AR1-UNV-010V-BK	COOPER, LITHONIA	208		POLE	15'-0"
P2	SINGLE HEAD, LED POLE, TYPE V DISTRIBUTION, ROUND POLE, 4000K CCT	26727 LM	154	SIGNIFY	P26-A07-840-T5M-AR1-UNV-010V-BK	COOPER, LITHONIA	208		POLE	15'-0"
S1	4" LENSED STRIP, 10% DIM0-10V	4611 LM	30	ILP	DSC4-4L-HE-U-935-FFLGR-NEKO-DIM1	COOPER, HUBBELL, KENALL, LITHONIA	120		SURFACE	3.4" OAH
S2	8" LENSED STRIP, 10% DIM0-10V	6257 LM	40	ILP	DSC8-8L-HE-U-935-FFLGR-NEKO-DIM1	COOPER, HUBBELL, KENALL, LITHONIA	120		SURFACE	3.4" OAH
S3	4" INDUSTRIAL STRIP WITH FIBERGLASS HOUSING	4000 LM	30	COOPER	4VT2-LD5-4000-DR-UNV-L835-CD1-WL-SSL	HUBBELL, KENALL, LITHONIA	120		SURFACE	5-7/8" OAH
U1	UNDERCABINET LED TAPE, IN AL EXTRUSION WITH FROSTED DIFFUSER, 1% DIM0-10V	346 LM/FT	4	LUMINII	KS-(LENGTH)-HE48MO-35K-HF-A-SA-(FEED); PDCU-D	ACOLYTE, CALI, DIODE LED	120	1	SURFACE	1" OAH
W1	2' LED WRAP, 10% DIM0-10V	2294 LM	16	ILP	DSC2-2L-HE-U-935-FFLGR-NEKO-DIM1	COOPER, HUBBELL, KENALL, LITHONIA	120		SURFACE - WALL	3.4" OAH
X1	EXIT/EMERGENCY LIGHT COMBO: POLYCARBONATE, UNIVERSAL MOUNTING, GREEN LETTERING, WHITE HOUSING, WITH INTEGRAL BATTERY BACK-UP, SELF DIAGNOSTICS	LED INCLUDED	5	SURE-LITES	LPXC-50-SD	WILLIAMS, HUBBELL, LITHONIA, SIGNIFY	120	2	SURFACE	7-1/2" OAH
X2	EXIT SIGN: POLYCARBONATE, UNIVERSAL MOUNTING, GREEN LETTERING, WHITE HOUSING, WITH INTEGRAL BATTERY BACK-UP, SELF DIAGNOSTICS	LED INCLUDED	5	SURE-LITES	LPX-7-G-SF	WILLIAMS, HUBBELL, LITHONIA, SIGNIFY	120	2	SURFACE	8-11/16" OAH
Y1	EMERGENCY LED BUG-EYE LIGHTING UNIT, SELF DIAGNOSTICS	LED INCLUDED	5	WILLIAMS	EMER/LED/WHT-SDT-D	COOPER, HUBBELL, LITHONIA, SIGNIFY	120		SURFACE	4-9/16" OAH

DELETED FIXTURE(S); TYPE W2



BARKER  
RINKER  
SEACAT  
ARCHITECTURE

brsarch.com



ENGINEERING/TECHNOLOGY/LIGHTING  
reesehackman.com

Superior, CO North Pool  
1650 S INDIANA ST, SUPERIOR, CO 80027



Project Number: 2025.009  
Issue: 100% PERMIT SET  
Date: 01.09.2026

Drawn By: R.H.  
Checked By: R.H.

Revisions:  
Description Date:  
ADDENDUM #1 02.25.2026  
ADDENDUM #2 04.13.2026

Sheet title:  
ELECTRICAL SCHEDULES

E701  
© 2025 Barker Rinker Seacat Architecture

## AQUATICS EQUIPMENT CONNECTIONS SCHEDULE

### GENERAL NOTES:

- BOND AND GROUND ALL AQUATICS EQUIPMENT, UNDERWATER POOL LIGHTS, POOL REINFORCING STEEL, ACTIVITIES DECK EQUIPMENT AND ALL OTHER EMBEDDED METALLIC ITEMS IN COMPLIANCE WITH THE NEC AND ALL LOCAL ELECTRICAL CODES. PROVIDE AN EQUIPOTENTIAL BONDING GRID IN POOL DECK PER N.E.C. 880.26.
- HARD WIRE EXHAUST FANS AND RELATED CONTROLS IN THE POOL EQUIPMENT ROOMS AND STORAGE ROOMS FOR CHLORINE AND ACID CHEMICALS. COORDINATE THE ELECTRICAL REQUIREMENTS WITH THE MECHANICAL AND POOL CONTRACTORS.
- ELECTRICAL CONTRACTOR SHALL PROVIDE ALL WIRING BETWEEN AQUATICS EQUIPMENT PER THE MANUFACTURER'S WIRING DIAGRAMS. AQUATICS EQUIPMENT AND PUMPS ARE BY THE POOL CONTRACTOR.
- UNLESS OTHERWISE NOTED, POOL CONTRACTOR SHALL FURNISH ALL MOTOR STARTERS AND/OR VFDs AND ELECTRICAL CONTRACTOR SHALL INSTALL AND POWER ALL MOTOR STARTERS AND/OR VFDs. COORDINATE EXACT REQUIREMENTS WITH MOTOR MANUFACTURERS AND POOL CONTRACTOR. PHASE LOSS AND PHASE REVERSAL PROTECTION SHALL BE INCLUDED WITH ALL STARTERS AND/OR VFDs. COORDINATE THE REQUIRED NUMBER OF CONTACTS WITH POOL EQUIPMENT INSTALLER PRIOR TO INSTALLING STARTER.
- EC SHALL PROVIDE FINAL CONNECTIONS TO ALL EQUIPMENT OPERATING AT 120V OR GREATER. CONNECTIONS TO PUMPS SHALL UTILIZE AT LEAST 18" OF LIQUIDTIGHT, FLEXIBLE, METALLIC CONDUIT, LFMC. REFER TO AQUATICS DETAILS AND DIVISION 26 SPECIFICATIONS FOR ADDITIONAL INFORMATION.
- REFER TO CONDUCTOR SCHEDULE FOR SIZE OF CONDUCTORS AND CONDUITS.
- BRANCH CIRCUIT SIZES DO NOT ACCOMMODATE FOR VOLTAGE DROP. REFER TO SPECIFICATIONS FOR INFORMATION ON ALLOWABLE VOLTAGE DROP PERMITTED AND UP-SIZE CONDUCTORS AND CONDUITS AS NECESSARY TO COMPLY WITH REQUIREMENTS.
- REFER TO "EQUIPMENT CONNECTIONS AND COORDINATION" SPECIFICATION FOR FURTHER REQUIREMENTS.
- ELECTRICAL CONTRACTOR SHALL PROVIDE INTERLOCKS AND/OR LINE-VOLTAGE CONTROL WIRING AS DESCRIBED IN THIS SCHEDULE AND INDICATED ON POOL EQUIPMENT CONTROLS DETAILS ON AQUATICS DRAWINGS. COORDINATE WITH POOL EQUIPMENT INSTALLER.
- ALL ELECTRICAL EQUIPMENT FURNISHED IN POOL MECHANICAL, POOL STORAGE AND CHEMICAL STORAGE ROOMS SHALL BE STAINLESS STEEL OR NON-METALLIC, WET LOCATION LISTED, TO RESIST CORROSION FROM POOL CHEMICALS.
- LOCATE EMERGENCY SHUT-OFF PUSH-BUTTONS WHERE INDICATED ON THE DRAWINGS. CONFIRM FINAL LOCATION WITH OWNER PRIOR TO ROUGH-IN. INCLUDE CLEAR FLIP-UP COVER.
- PROVIDE SUBMITTALS ON ALL ITEMS LISTED IN THIS SCHEDULE THAT ARE FURNISHED BY THE ELECTRICAL CONTRACTOR.
- REFER TO CONTROL SCHEMATIC DIAGRAMS ON AQUATICS (PL) DRAWINGS. EC SHALL PROVIDE ALL WIRING AT 120V OR GREATER, AS INDICATED ON THOSE DRAWINGS.
- EC SHALL FURNISH AND INSTALL STARTERS AS REQUIRED FOR ALL PUMPS/MOTORS NOT ALREADY FURNISHED WITH A STARTER OR VFD.

### KEY NOTES:

- POOL CONTRACTOR SHALL FURNISH VARIABLE FREQUENCY DRIVE (VFD). ELECTRICAL CONTRACTOR SHALL INSTALL AND WIRE VARIABLE FREQUENCY DRIVES (VFD), INCLUDING FINAL CONNECTION TO PUMP. REFER TO AQUATICS DOCUMENTS FOR SPECIFICATIONS ON VARIABLE FREQUENCY DRIVES AND COORDINATE SPECIFIC REQUIREMENTS WITH POOL CONTRACTOR AND EQUIPMENT SUPPLIER PRIOR TO BID. IF VFD INCLUDES A LISTED MEANS TO DISCONNECT ALL CONDUCTORS TO THE MOTOR AND IS WITHIN SIGHT OF THE MOTOR PER THE NEC, A SEPARATE DISCONNECT SWITCH SHALL NOT BE REQUIRED.
- PROVIDE A 3-POSITION SELECTOR SWITCH, LABELED "OFF-BACKWASH-FILTRATION" NEAR THE FILTRATION PUMP.
- PROVIDE REMOTE START/STOP STATION LOCATED IN LIFEGUARD OFFICE FOR EACH FEATURE PUMP. INCLUDE A CLEAR, LOCKABLE ENCLOSURE OVER EACH START/STOP BUTTON. COORDINATE LOCATION AND DETAILS WITH AQUATICS CONTRACTOR AND OWNER.
- PROVIDE (1) 20A DEDICATED CIRCUIT TO THE FILTER CONTROL PANEL (MOUNTED ON FILTER TANK).
- PROVIDE 2#12, 1#12G, 1/2" C FROM THE FILTER CONTROL PANEL TO THE CHEMICAL CONTROLLER. PROVIDE 1/2" C FROM THE FILTER CONTROL PANEL TO THE UV CONTROL CABINET. PROVIDE 1/2" C FROM THE FILTER CONTROL PANEL TO THE FILTRATION PUMP VFD.
- CHEMICAL CONTROLLER SHALL POWER THE CHLORINE FEED RELAYS, CO2 PH FEED RELAYS AND AUTOFILL WATER LEVEL CONTROL VALVES. PROVIDE INTERNET CONNECTION.
- PROVIDE DUPLEX RECEPTACLE AND HARDWIRE IT DIRECTLY TO THE PH FEED RELAY ON THE CHEMICAL CONTROLLER'S TERMINAL BLOCK. THE CHEMICAL CONTROLLER SHALL BE THE POWER SOURCE FOR THE RECEPTACLE. LABEL EACH CHEMICAL FEEDER OUTLET ACCORDINGLY, INCLUDING WHICH POOL IT FEEDS.
- PROVIDE DUPLEX RECEPTACLE AND HARDWIRE IT DIRECTLY TO THE CHLORINE FEED RELAY ON THE CHEMICAL CONTROLLER'S TERMINAL BLOCK. THE CHEMICAL CONTROLLER SHALL BE THE POWER SOURCE FOR THE RECEPTACLE. LABEL EACH CHEMICAL FEEDER OUTLET ACCORDINGLY, INCLUDING WHICH POOL IT FEEDS.
- HARDWIRE AUTOFILL'S WATER LEVEL CONTROL VALVE DIRECTLY TO THE AUTOFILL RELAY ON THE CHEMICAL CONTROLLER'S TERMINAL BLOCK. THE CHEMICAL CONTROLLER SHALL BE THE POWER SOURCE FOR THE VALVE.
- PROVIDE A MAGNETIC MOTOR STARTER WITH A MANUAL ON/OFF SWITCH. MOTOR STARTER SHALL HAVE LOW VOLTAGE CAPABILITY TO CONNECT TO HAND/OFF/AUTO SWITCH FOR FILTRATION PUMP.
- PROVIDE MINIMUM 1-1/2" CONDUIT FOR LAMP POWER CORD FROM CONTROL CABINET TO CHAMBER (LAMP POWER CORDS PROVIDED WITH UV SYSTEM). EC TO INSTALL BOTH CONDUIT AND POWER CORD. PROVIDE MINIMUM OF 1" CONDUIT FOR LOW VOLTAGE/SIGNAL CABLES FROM CONTROL CABINET TO CHAMBER (PROVIDED WITH UV SYSTEM).
- CONTROL PANEL SHALL FEED (2) CIRCULATION PUMPS. LOCATE DISCONNECT SWITCH NEAR DOOR AND PROVIDE PERMANENT LABEL ON DISCONNECT. PROVIDE EPO AT EACH DOOR INTO SPACE IN COMPLIANCE WITH ASME CSD-1 AND NFPA-70.
- OUTLET WILL PROVIDE POWER TO THE PLUG LABELED "120 VOLT" FOR BOOSTER PUMP THAT IS INTEGRAL TO CHLORINE FEED SYSTEM. LABEL "CHLORINE FEED SYSTEM POWER".
- LOCATE DEVICE "18" AFF NEAR THE CO2 FEED EQUIPMENT.
- PROVIDE EMERGENCY SHUTDOWN BUTTON TO SHUT OFF ALL PUMPS INDICATED. LOCATE ON "44" AFF POOL DECK AT LEAST 5'-0" AWAY FROM AND WITHIN SIGHT OF THE POOL. INCLUDE AUDIBLE AND VISUAL ALARM ON EPO AND COMPLY WITH NEC 680. CONFIRM LOCATION OF EPO WITH OWNER PRIOR TO ROUGH-IN.

KEY	ITEM	LISTED LOAD			EQUIV. LOAD (VA)	VOLTS	PH	BRANCH CIRCUIT WIRING AND CONDUIT	DISCONNECT	KEY NOTES
		HP	MCA	KW						
A-AC1	AIR COMPRESSOR #1	2			2880	120	1	50.2G	STARTER	10
A-AF1A	AUTOFILL - LAP POOL		15		1800	120	1	20.2G	20A1P	9
A-AF1B	AUTOFILL - SPLASH PLAY POOL		15		1800	120	1	20.2G	20A1P	9
A-AP1A	C1A CHEMICAL FEEDER - CO2 - LAP POOL		1.7		204	120	1	20.2G	C&P	7
A-AP1B	C1B CHEMICAL FEEDER - CO2 - SPLASH PLAY POOL		1.7		204	120	1	20.2G	C&P	7
A-AP2A	C1A CHEMICAL FEEDER - ACID - LAP POOL		1.7		204	120	1	20.2G	C&P	7
A-AP2B	C1B CHEMICAL FEEDER - ACID - SPLASH POOL		1.7		204	120	1	20.2G	C&P	7
A-BP1A	CHEMICAL BOOSTER PUMP - LAP POOL	1.5			2880	120	1	30.2G	C&P	13
A-BP1B	CHEMICAL BOOSTER PUMP - SPLASH PLAY POOL	1.5			2880	120	1	30.2G	C&P	13
A-C1A	CHEMICAL CONTROLLER - LAP POOL		15		1800	120	1	20.2G	20A1P	6
A-C1B	CHEMICAL CONTROLLER - SPLASH PLAY POOL		15		1800	120	1	20.2G	20A1P	6
A-CP1A	C1A CHEMICAL FEEDER - CHLORINE RM - LAP POOL		1.7		204	120	1	20.2G	C&P	8
A-CP1B	C1B CHEMICAL FEEDER - CHLORINE RM - SPLASH PLAY POOL		1.7		204	120	1	20.2G	C&P	8
A-EV1A	DIGITAL POSITION VALVE - LAP POOL		15		1800	120	1	20.2G	20A1P	
A-F1A	FILTER CONTROL PANEL - LAP POOL		12		1440	120	1	20.2G	20A1P	4.5
A-FP1	FLOW METER POWER SUPPLY		12		1440	120	1	20.2G	20A1P	
A-H1A	POOL WATER HEATER CONTROL PANEL		30		10808	208	3	40.3G	60A3P	12
A-P1A	FILTRATION PUMP - LAP POOL		20		22373	208	3	100.3G	100A3P	1
A-P1B	FILTRATION PUMP - SPLASH PLAY POOL		5		6305	208	3	40.3G	60A3P	1.2
A-P2B	ACTIVITY PUMP - SPLASH PLAY POOL		5		6305	208	3	40.3G	60A3P	1.3
A-UV2A	SPLASH PLAY POOL UV - CONTROL CABINET		1.5		1500	208	1	20.2G	30A2P	11

## PANEL SCHEDULE L1A

PROJECT:	SUPERIOR NORTH POOL	VOLTAGE L-L / L-N:	208/120
JOB NO.:	2025003	TYPE:	3PH, 4W
LOCATION:	STO 120	SHORT CIRCUIT RATING:	REFER TO ELECTRICAL ONE-LINE DIAGRAM
MINIMUM BUS CAPACITY:	800	MOUNTING:	SURFACE
MAIN OVERCURRENT DEVICE:	800	COMMENTS:	
DESIGN CAPACITY:	800		

CKT NO.	DESCRIPTION	DEVICE (AMPS)	POLE	A (VA)	B (VA)	C (VA)	POLE	DEVICE (AMPS)	DESCRIPTION	CKT NO.
1	LTG - MECH BUILDING	20	1	487	200		1	15	EF-13 SPACE	2
3	LTG - POOL UNDERWATER	20	1		1400		1	--	BUSSED SPACE	4
5	SECP-1 - SEWAGE EJECTOR CONTROL PANEL #1	20	1			600	750	2	A-UV2A - SPLASH PLAY POOL UV - CONTROL CABINET	6
7	EF-10 - EXHAUST FAN #10 (CHEMICAL ROOM)	20	1	696	750			--		8
9	EF-11 - EXHAUST FAN #11 (CHEMICAL ROOM)	20	1		696	528		1	EF-12 - EXHAUST FAN #12 (STORAGE ROOMS)	10
11	SE-1 - SEWAGE EJECTOR #1	20	1			1176	1440	1	A-F1A - FILTER CONTROL PANEL - LAP POOL	12
13	A-FP1 - FLOW METER POWER SUPPLY	20	1	1440	864			1	EF-9 - EXHAUST FAN #9 (PUMP ROOM)	14
15	SE-2 - SEWAGE EJECTOR #2	20	1		1176	1800		1	A-AF1A - AUTOFILL LAP POOL	16
17	A-AF1B - AUTOFILL SPLASH PLAY POOL	20	1			1800	408	1	A-AP2A, A-AP2B - C1A, C1B CHEM FEEDER - CHEM ROOM	18
19	REC - POOL MECH	20	1	900	1800			1	A-C1B - CHEMICAL CONTROLLER - LAP POOL	20
21	REC - PUMP PIT	20	1		540	408		1	A-CP1A, A-CP2B - C1A, C1B CHEM FEEDERS CHEM ROOM	22
23	A-AP1A, A-AP1B - C1A, C1B CHEM FDRS - CHEM ROOM	20	1			408	1800	1	A-C1A - AIR COMPRESSOR #1	24
25	A-EV1A - DIGITAL POSITION VALVE - LAP POOL	20	1	1800	1140			1	GWH-1	26
27	REC - CHEMICAL ROOMS	20	1		360	2880		1	A-BP1B - CHEM BOOSTER PUMP - SPLASH PLAY POOL	28
29	REC - STORAGE & ELECTRICAL ROOM	20	1			720	2880	1	A-BP1A - CHEM BOOSTER PUMP - LAP POOL	30
31	REC - EXTERIOR	20	1	720	2880			1	A-AC1 - AIR COMPRESSOR #1	32
33	SPCP-1	20	1		600	1176		1	SP-1	34
35	REC - ROOF	20	1			360	1176	1	SP-2	36
37	LTG - CONTROL EQUIPMENT	20	1	180	1909			3	EUH-1 ELECTRIC UNIT HEATER (PUMP ROOM)	38
39	SPARE	20	1		0	1909		--	--	40
41	SPARE	20	1			0	1909	--	--	42
43	SPARE	20	1	0	2102			3	A-P1B - FILTRATION PUMP - SPLASH PLAY POOL	44
45	SPARE	20	1		0	2102		--	--	46
47	SPARE	20	1			0	2102	--	--	48
49	SPARE	20	1	0	3603			3	A-H1A - POOL WATER HEATER CONTROL PANEL	50
51	SPARE	20	1		0	3603		--	--	52
53	SPARE	20	1			0	3603	--	--	54
55	BUSSED SPACE	--	1	--	2102			3	A-P2B - ACTIVITY PUMP - SPLASH PLAY POOL	56
57	BUSSED SPACE	--	1	--	--	2102		--	--	58
59	BUSSED SPACE	--	1	--	--	2102		--	--	60
61	BUSSED SPACE	--	1	--	7458			3	100 A-P1A - FILTRATION PUMP - LAP POOL	62
63	BUSSED SPACE	--	1	--	7458			--	--	64
65	BUSSED SPACE	--	1	--	--	7458		--	--	66
67	BUSSED SPACE	--	1	--	21377			3	400 PANEL 'L1B'	68
69	BUSSED SPACE	--	1	--	--	25532		--	--	70
71	BUSSED SPACE	--	1	--	--	21332		--	--	72
TOTAL LOAD:		52406 VA		54269 VA		52022 VA				
TOTAL AMPS:		437.204 A		452.733 A		433.519 A				

LOAD CLASSIFICATION	CONNECTED	D.F.	EST. DEMAND	PANEL TOTALS
LIGHTING LOAD:	4401 VA	125%	5502 VA	TOTAL CONN. LOAD: 158697 VA
RECEPTACLE LOAD:	9900 VA	FIRST 10000VA AT 100% REMAINING AT 90%	9900 VA	TOTAL EST. DEMAND: 159797 VA
LARGEST MOTOR:				TOTAL CONN.: 440 A
MOTOR LOAD:		LARGEST AT 125% REMAINING AT 100%		TOTAL EST. DEMAND: 444 A
KITCHEN EQUIPMENT:				
EQUIPMENT:	118616 VA	100%	118616 VA	
HEATING:				
ELEVATOR:				
SUB-FED PANEL:				
NOTES:				

## PANEL SCHEDULE L1B

PROJECT:	SUPERIOR NORTH POOL	VOLTAGE L-L / L-N:	208/120
JOB NO.:	2025003	TYPE:	3PH, 4W
LOCATION:	MECHELEC 105	SHORT CIRCUIT RATING:	REFER TO ELECTRICAL ONE-LINE DIAGRAM
MINIMUM BUS CAPACITY:	400	MOUNTING:	SURFACE
MAIN OVERCURRENT DEVICE:	400	COMMENTS:	
DESIGN CAPACITY:	400		

CKT NO.	DESCRIPTION	DEVICE (AMPS)	POLE	A (VA)	B (VA)	C (VA)	POLE	DEVICE (AMPS)	DESCRIPTION	CKT NO.	
1	LTG - POOL DECK LTG	20	2	539	2000		2	40	LTG - TENNIS COURT	2	
3	--	--	--	--	539	2000	--	--	--	4	
5	LTG - PARKING LOT	20	2			1500	2000	2	40	LTG - TENNIS COURT	6
7	--	--	--	500	2000			--	--	8	
9	LTG - EXTERIOR	20	1		607	2000		2	40	LTG - TENNIS COURT	10
11	LTG - WEST RESTROOMS AND LOBBY	20	1			364	2000	--	--	12	
13	LTG - ELEC. WOMENS RR. AND GUARD ROOM	20	1	466	2000			2	40	LTG - TENNIS COURT	14
15	REC - TIMECLOCK	20	1		360	2000		--	--	16	
17	FAMILY CHANGING HAND DRYER	20	1			1150	0	2	50	PV - INVERTER	18
19	ALL SEASON HAND DRYER	20	1	1150	0			--	--	20	
21	MENS HAND DRYER	20	1		1150	2912		2	40	EW-2	22
23	MENS HAND DRYER	20	1			1150	2912	--	--	24	
25	WOMENS HAND DRYER	20	1	1150	3952			2	60	CU-1	26
27	WOMENS HAND DRYER	20	1		1150	3952		--	--	28	
29	REC - MECH ELEC QUAD	20	1			360	2004	1	30	EW-1	30
31	GUARD REFRIGERATOR	20	1	1080	600			1	20	EW-C	32
33	GUARD REFRIGERATOR	20	1		1080	1176		1	20	GARBAGE DISPOSAL	34
35	REC - GUARD	20	1			720	528	1	20	PP-1	36
37	REC - GUARD	20	1	360	500			1	20	SECURITY PANEL	38
39	REC - POOL DECK	20	1		180	900		1	20	REC - ALL SEASON & WOMENS	40
41	REC - POOL DECK	20	1			180	360	1	20	REC - MECH ELEC	42
43	REC - EXTERIOR	20	1	720	0			1	20	SPARE	44
45	REC - MENS AND FAMILY CHANGING	20	1		900	0		1	20	SPARE	46
47	REC - CONTROL DESK	20	1			900	0	1	20	SPARE	48
49	REC - LOBBY	20	1	360	4000			3	45	EW-1	50
51	EXHAUST FANS 1-3	20	1		626	4000		--	--	52	