

Town of Superior Community Center Improvements

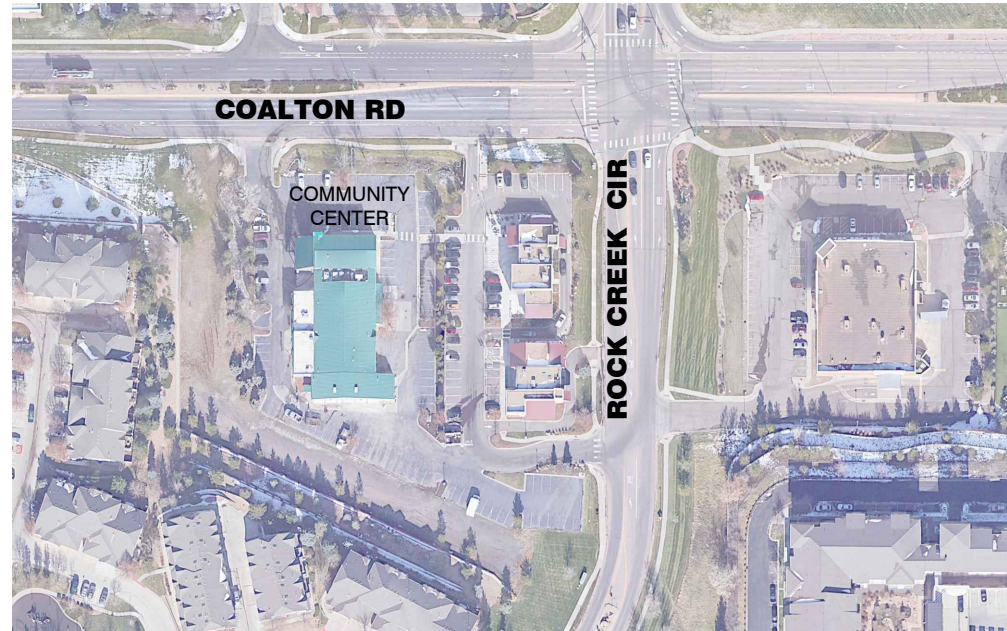
LOCATED IN
TOWNSHIP 1 SOUTH, RANGE 69 WEST, 6th P.M.
COUNTY of BOULDER, STATE of COLORADO
MARCH, 2026

PAVEMENT

1. COMPLY WITH THE TRENCH PATCHBACK DETAIL FOR THE TOWN OF SUPERIOR PUBLIC WORKS DEPARTMENT INCLUDED IN THE DETAIL DRAWINGS.
2. THE CONTRACTOR SHALL VIDEOTAPE THE EXISTING PAVEMENT CONDITIONS BEFORE CONSTRUCTION.
3. THE CONTRACTOR SHALL USE CAUTION SO AS NOT TO SCRAPE OR SCALLOP THE EDGE OF EXISTING CONCRETE DURING EXCAVATION.
4. THE ASPHALT THICKNESS FOR PAVEMENT REPAIRS SHALL MATCH THE EXISTING PAVEMENT THICKNESS OR THE THICKNESS SPECIFIED BELOW FOR THE VARIOUS STREET CLASSIFICATIONS, WHICHEVER IS GREATER.

PAVED AREA	CLASSIFICATION	REQUIRED ASPHALT THICKNESS
PARKING LOT		7 INCHES

5. NO DIMENSION OF EXISTING PAVEMENT LESS THAN 3 FEET SHALL BE LEFT BETWEEN THE NEW PATCH AND THE EXISTING LIP OF GUTTER OR EXISTING EDGE OF PAVEMENT (5 FEET FOR CONCRETE). ARTERIAL AND COLLECTOR STREETS, NO SIDE OF A PATCH SHALL FALL WITHIN 2 FEET OF AN EXISTING WHEEL PATH. PATCHES WITHIN 2 FEET SHALL REQUIRE THE REMOVAL OF ADDITIONAL PAVEMENT TO MEET THIS REQUIREMENT.
6. CONSTRUCTION EQUIPMENT SHALL BE KEPT OFF OF CURB, GUTTER, CONCRETE PANS AND SIDEWALK. KEEP BEDDING AND BACKFILL MATERIAL OFF OF CONCRETE SURFACES. SCRAPED OR OTHERWISE DAMAGED CURB, GUTTER, SIDEWALK, CONCRETE PANS OR ASPHALT PAVEMENT SHALL BE REMOVED AND REPLACED AT THE CONTRACTOR'S EXPENSE.
7. ALL MANHOLE RIMS, VALVE BOXES, AND COVERS SHALL BE SET 1/4" BELOW TO THE ADJACENT PAVEMENT SURFACE AND SHALL MATCH THE LONGITUDINAL AND TRANSVERSE SLOPE OF THE STREET PAVEMENT.



VICINITY MAP
SCALE 1" = 100'±



SHEET INDEX

- 1** Cover Sheet
- 2-3** General Notes
- 4-5** Demolition Plan
- 6-7** Site & Erosion Control Plan
- 8** Concrete Pan
- 9-11** Grading Plan
- 12-14** Storm Sewer Plan & Profile
- 15-16** Striping Plan
- 17-19** Structural Plans
- 20-22** Details

LEGEND

---5280---	EXISTING CONTOURS	⊙	EXISTING SEWER MANHOLE
==5280==	PROPOSED CONTOURS	⊗	EXISTING FIRE HYDRANT
=====	EXISTING EDGE OF CONCRETE	⊙	EXISTING WATER METER
—G—	EXISTING GAS LINE	⊙	EXISTING WATER VALVE
—W—	EXISTING WATERLINE	⊙	EXISTING STORM SEWER MANHOLE
—SAN—	EXISTING SEWER LINE	⊙	EXISTING TREE
—ST—	EXISTING STORM SEWER	⊙	CONCRETE
—CTV—	EXISTING CABLE TV	⊙	POTHOLE LOCATION
—E—	EXISTING POWER	⊙	PROPOSED CONCRETE
—T—	EXISTING TELEPHONE	⊙	PROPOSED STORM SEWER
—TS—	EXISTING TRAFFIC SIGNAL	5400.00	PROPOSED POINT ELEV
—FO—	EXISTING FIBER OPTIC	---	PROPOSED CURB DRAIN
---	EXISTING ROW		
---	EXISTING EASEMENT		
X 5400.00	EXISTING POINT ELEV		

HORIZONTAL AND VERTICAL CONTROL

HORIZONTAL COORDINATES SHOWN HEREON ARE BASED UPON THE COLORADO STATE PLANE COORDINATE SYSTEM, NORTH ZONE AND HAVE BEEN MODIFIED TO GROUND AROUND 0.00 N, 0.00 E BY A COMBINED FACTOR OF 1.000286192 OR 0.99971389

ELEVATIONS SHOWN HEREON ARE BASED UPON STATIC GPS OBSERVATIONS POST PROCESSED THROUGH THE NATIONAL GEODETIC SURVEY'S ONLINE POSITIONING USER SERVICE (OPUS) RESULTING IN CONTROL POINT NO. 1 HAVING AN ELEVATION OF 5467.30 NAVD 88 (GEOID 18)

PROJECT CONTROL COORDINATE TABLE

PT #	NORTHING	EASTING	ELEVATION	DESCRIPTION
1	1217044.59	3099578.25	5467.30	60D NAIL WITH PINK CHASER
455	1217376.54	3099616.34	5453.41	1 1/2" ALUMINUM CAP FLUSH WITH ASPHALT, ILLEGIBLE
586	1217372.85	3099478.48	5457.69	CHISLED X IN TIP OF CURB
626	1217337.49	3099383.07	5457.15	MAG NAIL IN SIDEWALK
628	1217048.49	3099557.86	5467.88	5/8" REBAR WITH 1 1/4" YELLOW PLASTIC CAP "SAM CP"
629	1217152.59	3099354.33	5469.08	5/8" REBAR WITH 1" BLUE PLASTIC CAP, ILLEGIBLE
747	1217388.53	3099363.56	5455.85	1/2" REBSAR WITH 1" ORANGE PLASTIC CAP, PLS 37066

OWNER

Town of Superior
124 East Coal Creek Drive
Superior, CO 80027
303-499-3675

CIVIL ENGINEER

J&T Consulting, Inc.
James C. York
305 Denver Ave., Ste. D
Fort Lupton, CO 80621
303-857-6222

SURVEYOR

American West Land Surveying Co.
331 South 4th Avenue
P.O. Box 129
Brighton, CO 80601
303-659-1532

GEOTECHNICAL/SOIL INVESTIGATIONS

CMT Technical Services
7108 S Alton Way, Bldg. B
Centennial, CO 80112
303-220-0300

STRUCTURAL ENGINEER

The Lepetsos Group
Greg Lepetsos
11 Poonia
Littleton, CO 80127
303-932-8547

Town Certification

All work shall be constructed to Town of Superior DESIGN STANDARDS AND SPECIFICATIONS. This drawing has been reviewed and found to be in general compliance with these DESIGN STANDARDS AND SPECIFICATIONS and other Superior requirements. THE ENGINEERING DESIGN CONCEPT REMAINS THE RESPONSIBILITY OF THE PROFESSIONAL ENGINEER WHOSE STAMP AND SIGNATURE APPEAR HEREON.

Town (or Designee) _____

Date _____

Engineer's Certification

I hereby certify that these plans for the construction of the Town of Superior Community Center Project were prepared by me or under my direct supervision for the Town on Superior.

James C. York, P.E.
Colorado Registration No. 36846

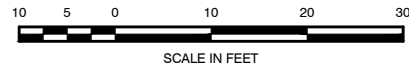
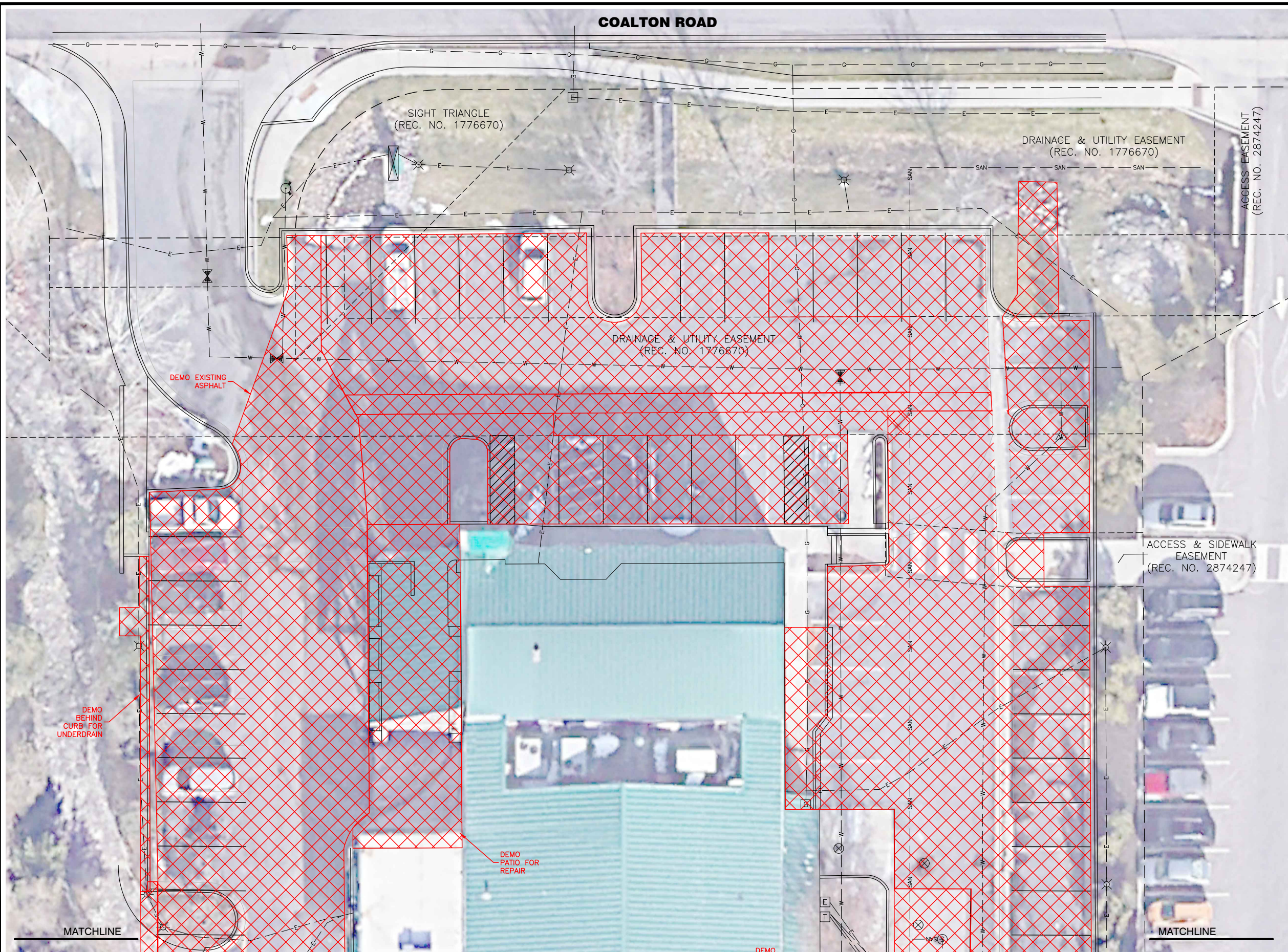
No.	Date	By	Chk	Description
1	3.30.26	WSS	JFM	Town Comments

Job #	23024
Date	3/6/26
Drawn By	WSS
Designed By	WSS
Checked By	JFM
File	JT-cover.dwg
Scale	As Shown

Sheet: _____ of _____



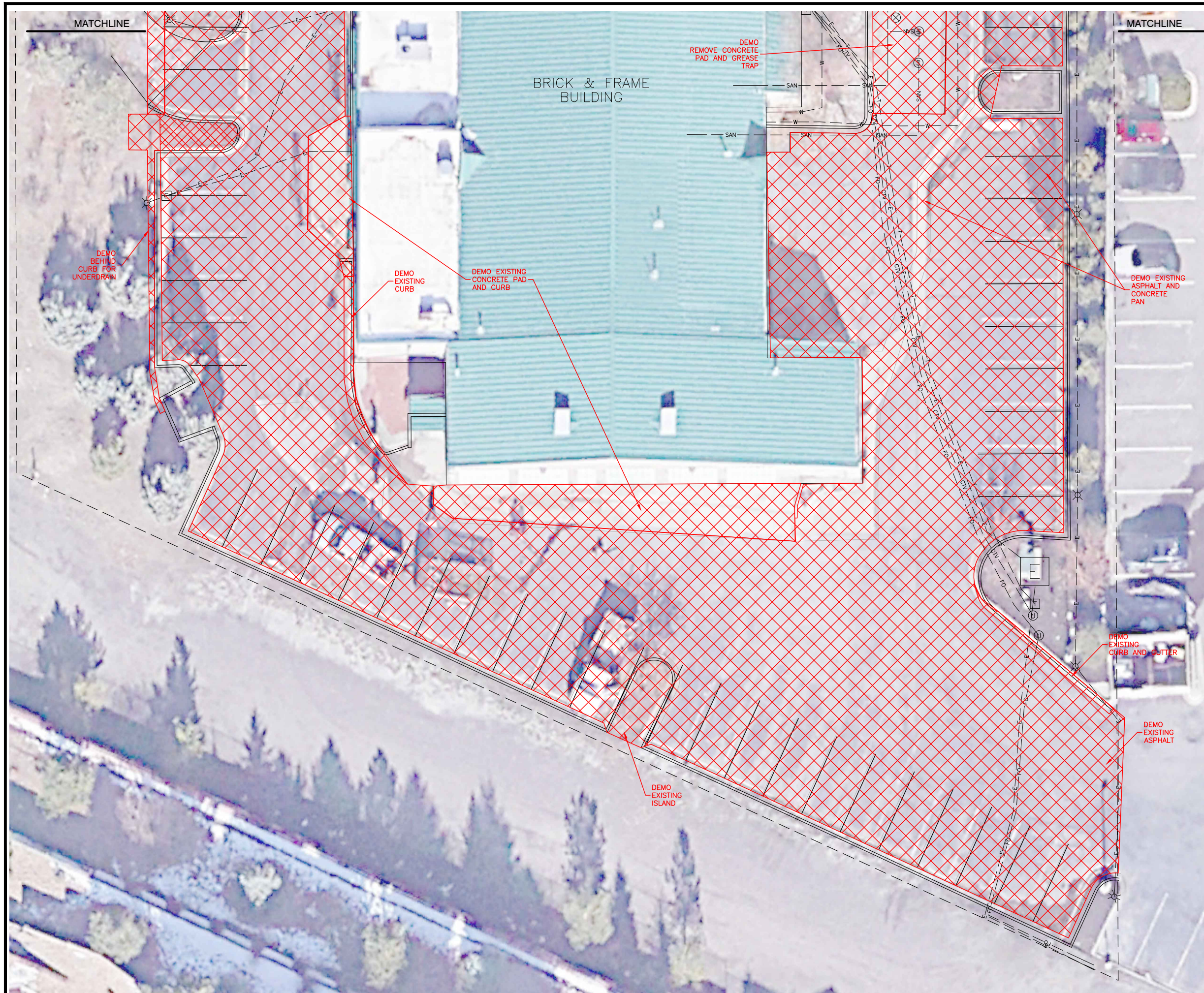
COALTON ROAD



REVISIONS		Description
No.	Date	By
1	3.30.26	WSS
		JFM

Job #	23024
Date	3/6/26
Drawn By	WSS
Designed By	WSS
Checked By	JFM
File	JT-demo.dwg
Scale	As Shown

ISSUED FOR REVIEW



J&T Consulting, Inc.
 305 Denver Avenue - Suite D
 Fort Lupton, CO 80621
 Ph: 303.857.6222
 www.jtconsulting.com

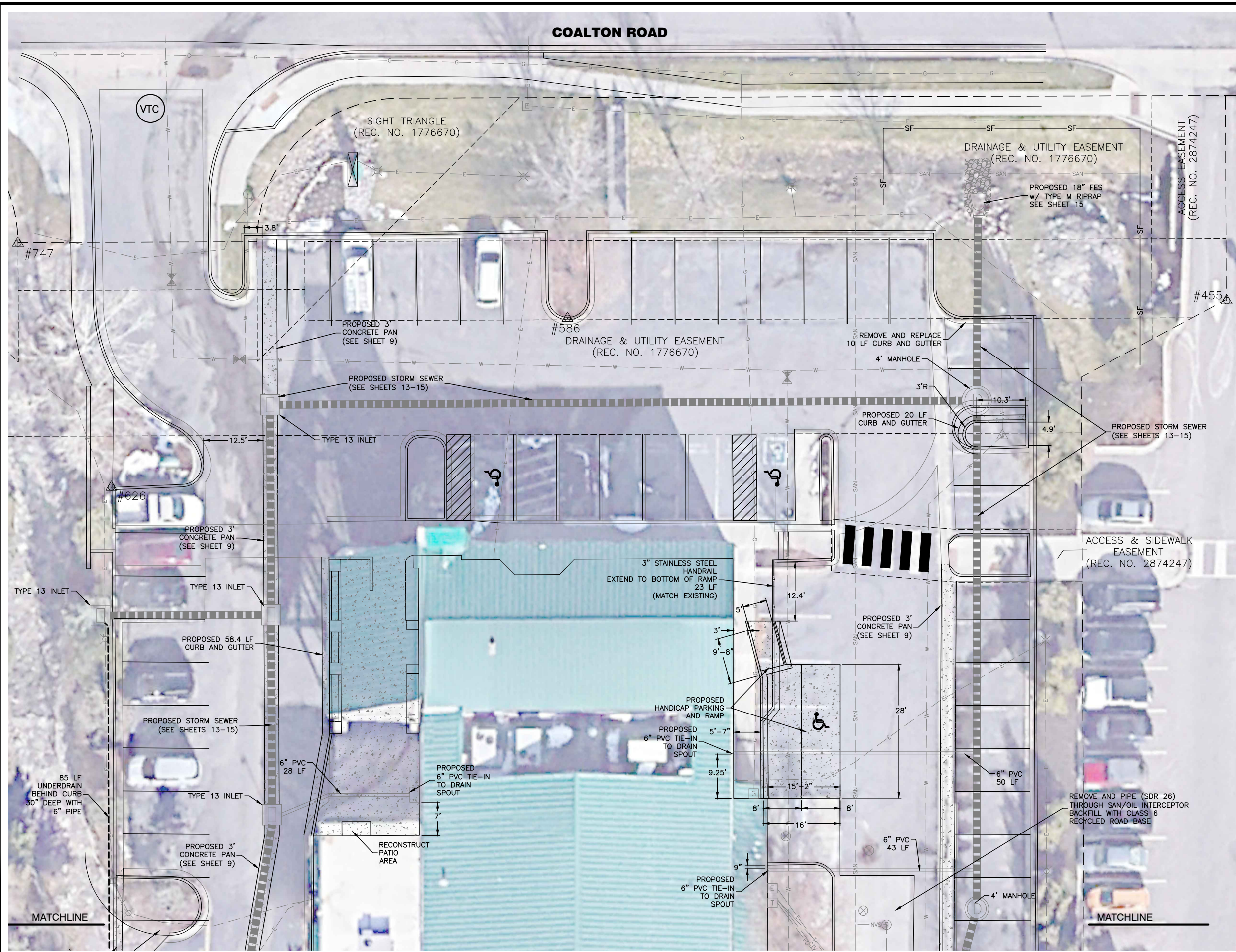
Community Center Improvements
 Demolition Plan

Town Of Superior

REVISIONS		Description
No.	Date	By
1	3/30/26	WSS
		JFM

Job #	23024
Date	3/6/26
Drawn By	WSS
Designed By	WSS
Checked By	JFM
File	JT-demo.dwg
Scale	As Shown
Sheet:	5 of 22

ISSUED FOR REVIEW

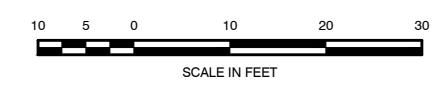


COALTON ROAD

ISSUED FOR REVIEW

No.	Date	By	Chk	Description
1	3.30.26	WSS	JFM	Town Comments

Job #	23024
Date	3/6/26
Drawn By	WSS
Designed By	WSS
Checked By	JFM
File	JT-site.dwg
Scale	As Shown



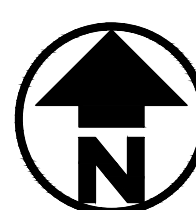
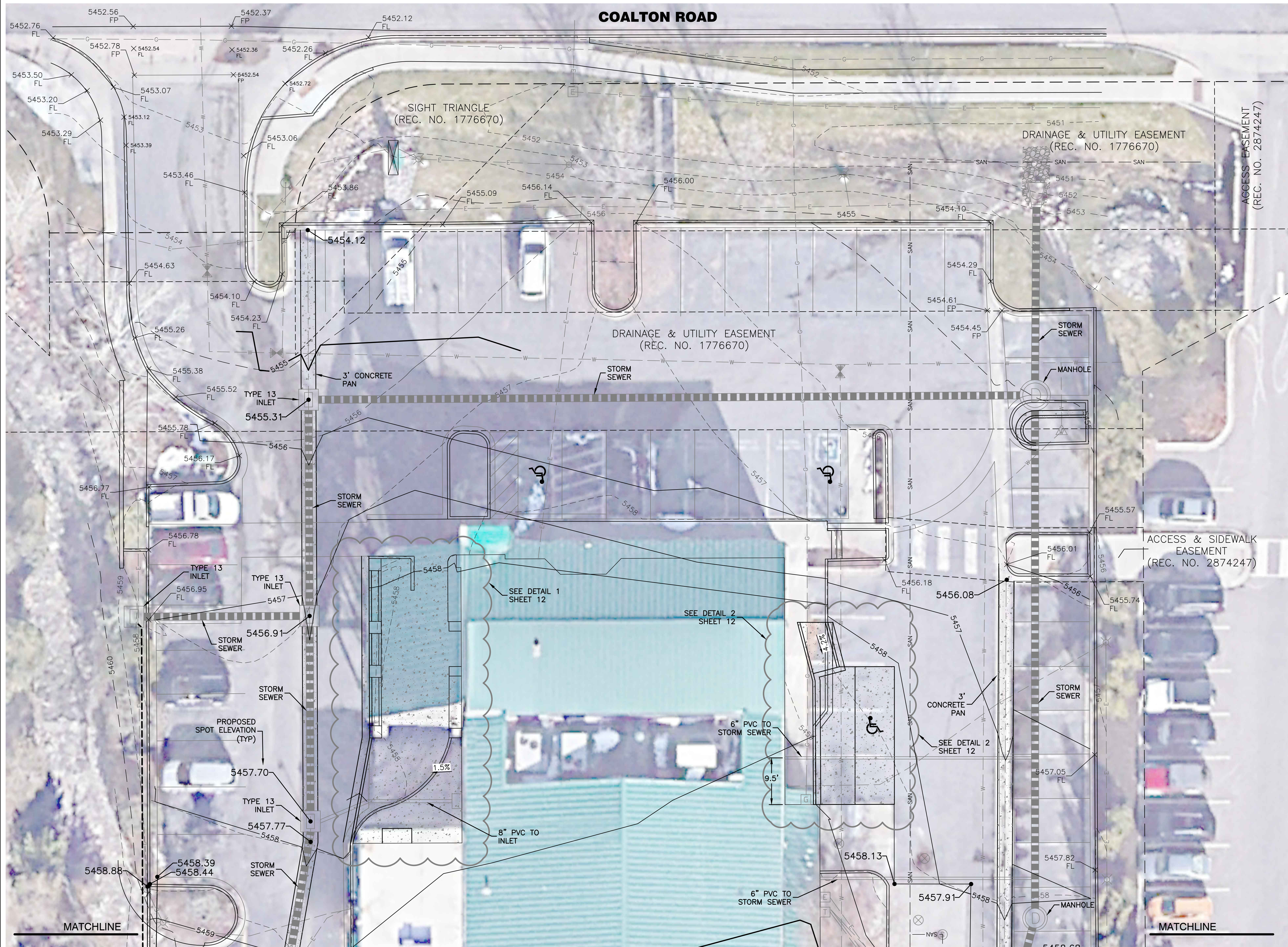


REVISIONS		Description
No.	Date	By
1	3/30/26	WSS
		JFM

Job #	23024
Date	3/6/26
Drawn By	WSS
Designed By	WSS
Checked By	JFM
File	JT-site.dwg
Scale	As Shown

ISSUED FOR REVIEW

COALTON ROAD



ISSUED FOR REVIEW

REVISIONS		Description	
No.	Date	By	Chk
1	3.30.26	WSS	JFM

Job #	23024
Date	3/6/26
Drawn By	WSS
Designed By	WSS
Checked By	JFM
File	JT-grading.dwg
Scale	As Shown

Sheet: **9** of **22**

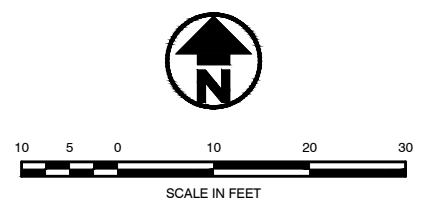
Community Center Improvements

Town Of Superior

Grading Plan



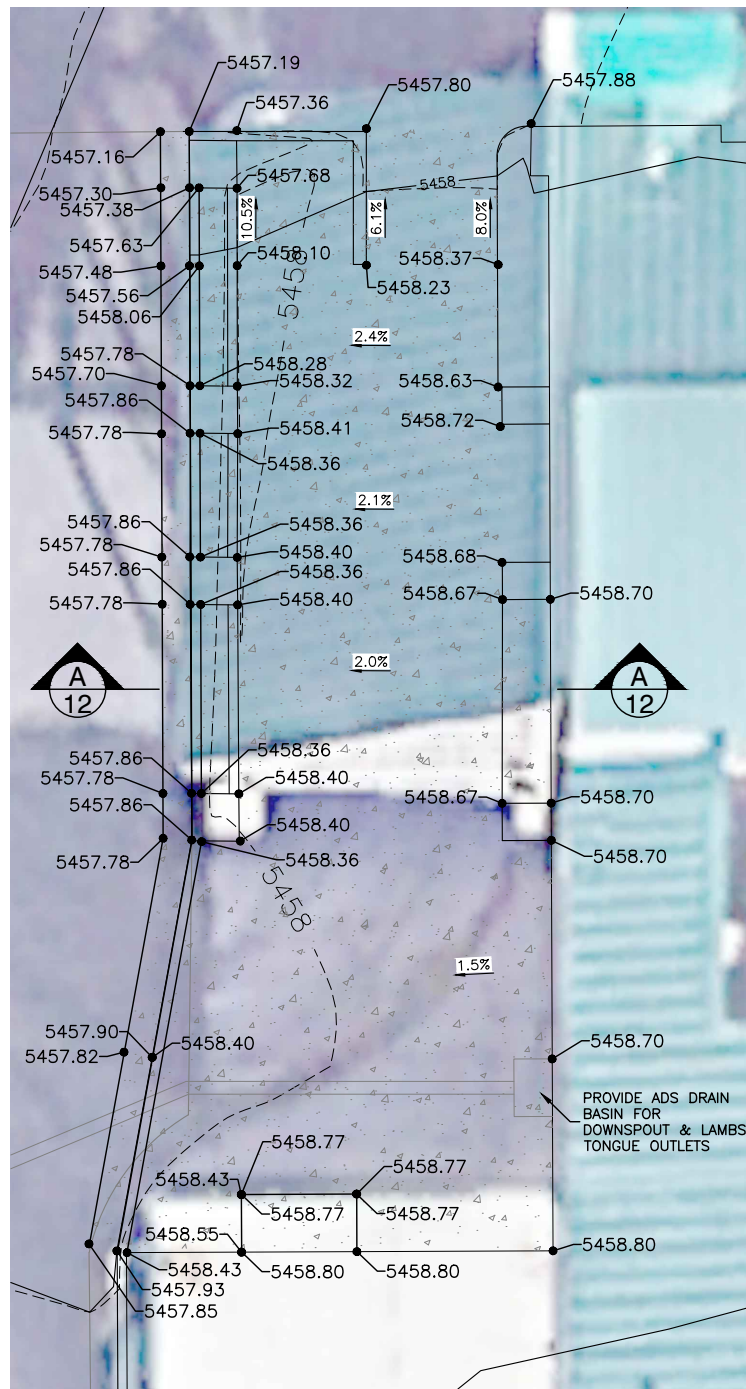
J&T Consulting, Inc.
 305 Denver Avenue - Suite D
 Fort Lupton, CO 80621
 Ph: 303-857-6222
 www.jtconsulting.com



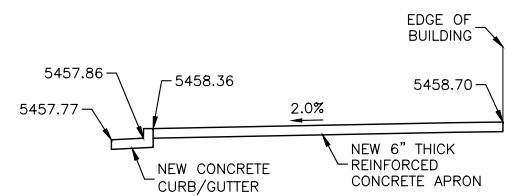
ISSUED FOR REVIEW

No.	Date	By	Chk	Description
1	3/30/26	WSS	JFM	Town Comments

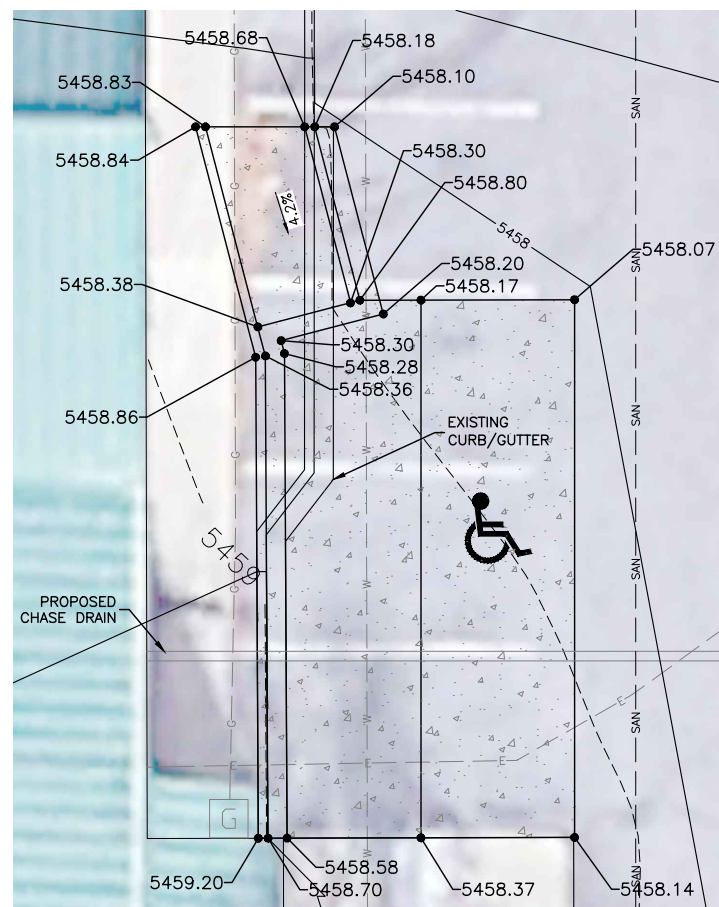
Job #	23024
Date	3/6/26
Drawn By	WSS
Designed By	WSS
Checked By	JFM
File	JT-grading.dwg
Scale	As Shown
Sheet:	or:
10	22



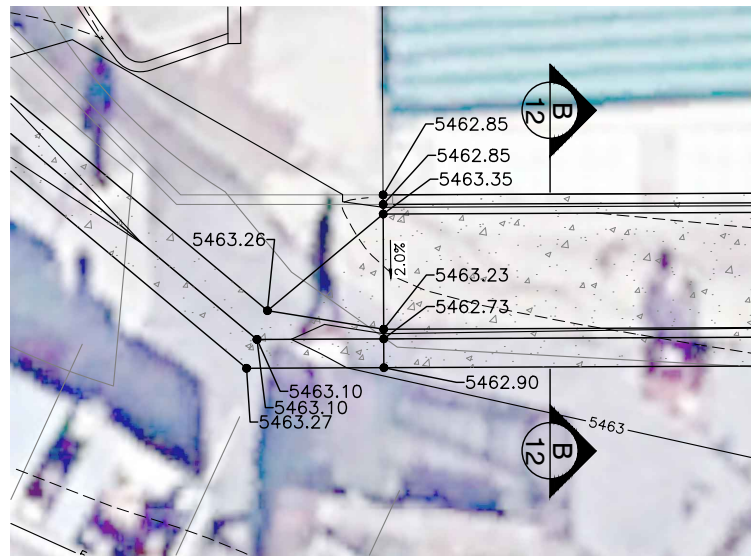
1
12 **COMMUNITY CENTER ENTRANCE**
SCALE 1" = 5'



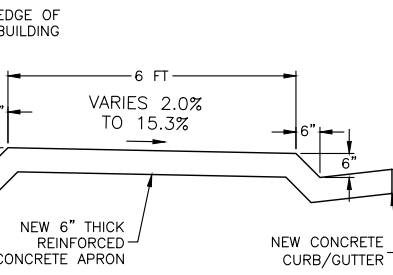
7
12 **SECTION A-A**
SCALE 1" = 5'



2
12 **PROPOSED ADA PARKING AND RAMP**
SCALE 1" = 5'



5
12 **PROPOSED CONCRETE**
SCALE 1" = 5'



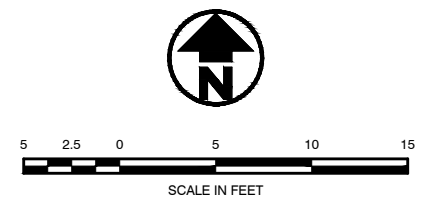
8
12 **SECTION B-B**
SCALE 1" = 5'



3
12 **PROPOSED CONCRETE**
SCALE 1" = 5'



4
12 **PROPOSED CONCRETE**
SCALE 1" = 5'

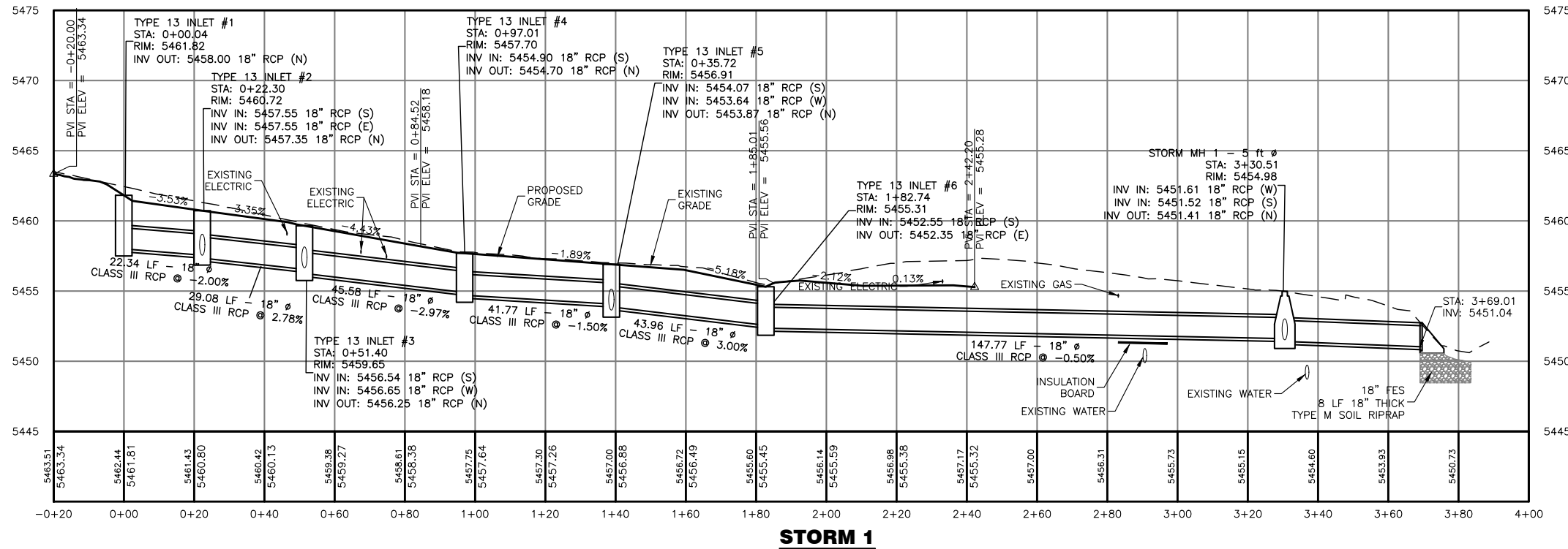
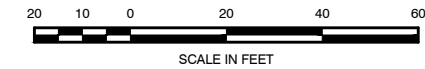
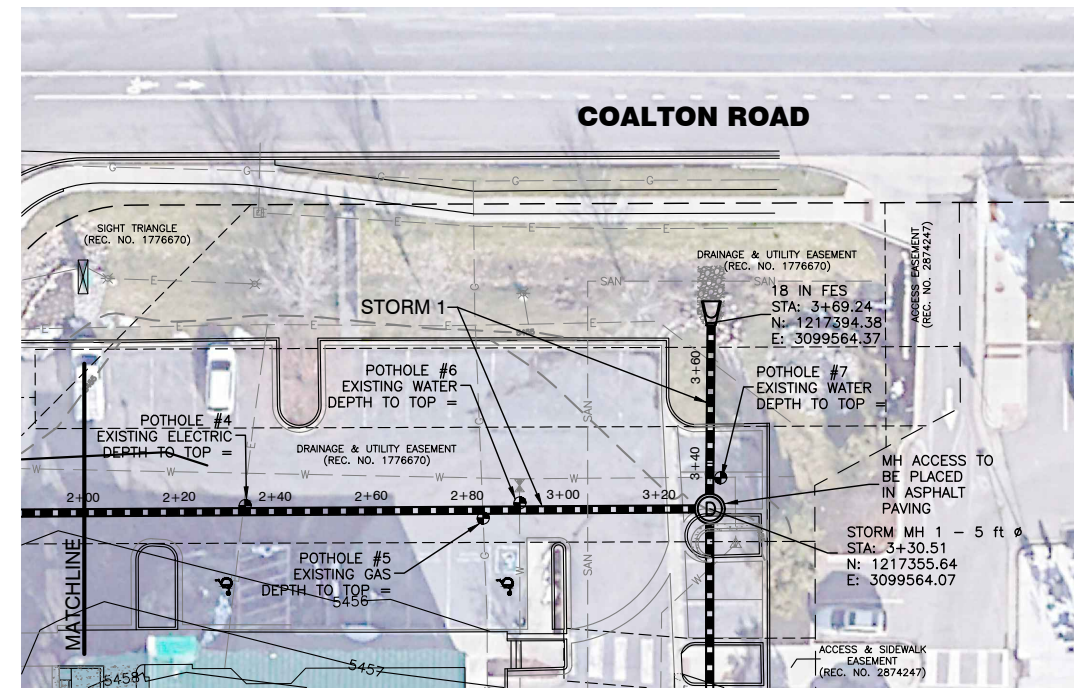
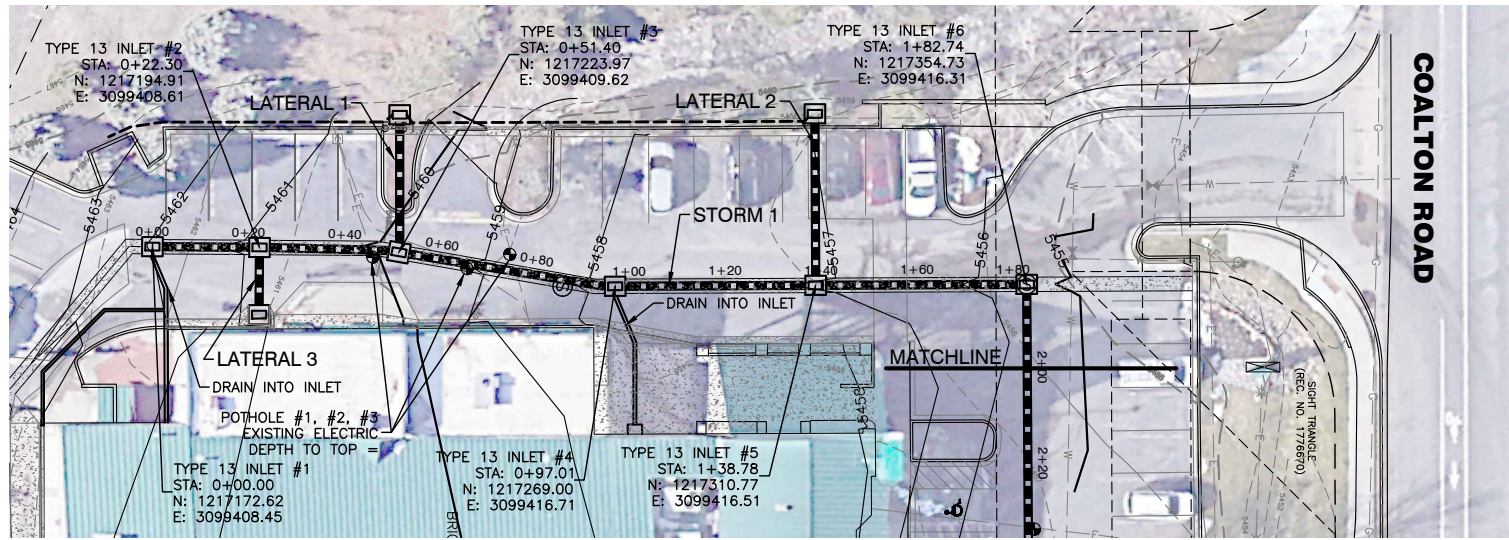


ISSUED FOR REVIEW

REVISIONS		Description
No.	Date	By
1	3.30.26	WSS

Job #	23024
Date	3/6/26
Drawn By	WSS
Designed By	WSS
Checked By	JFM
File	JT-grading.dwg
Scale	As Shown

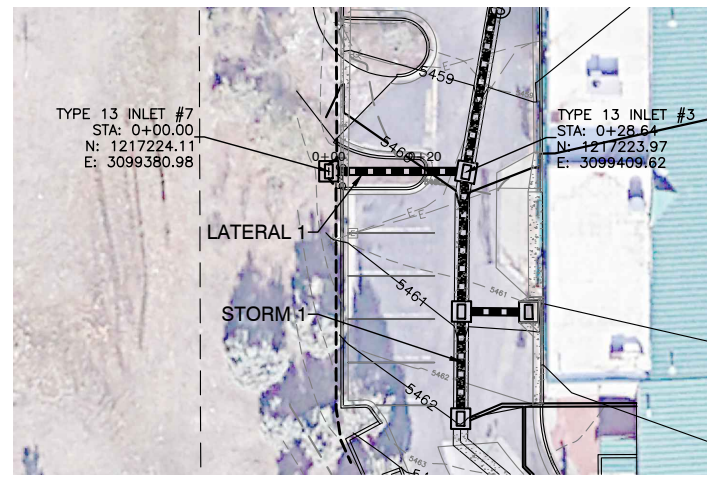
Sheet: **11** of **22**



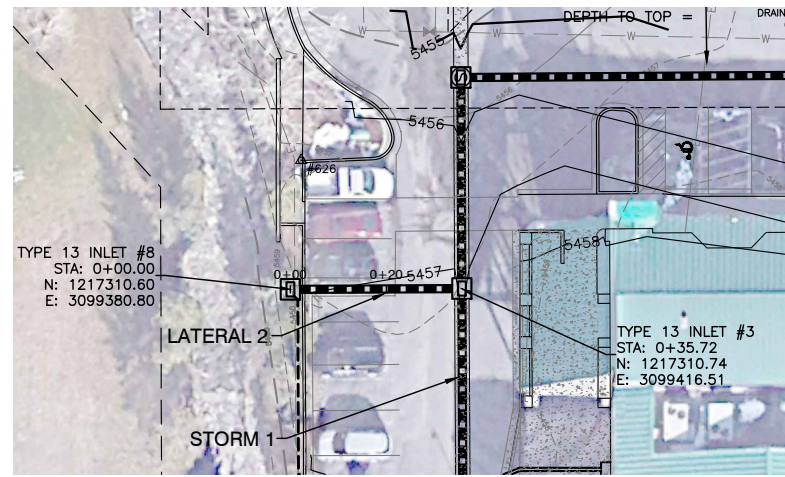
REVISIONS		Description
No.	Date	By
1	3.30.26	WSS

ISSUED FOR REVIEW

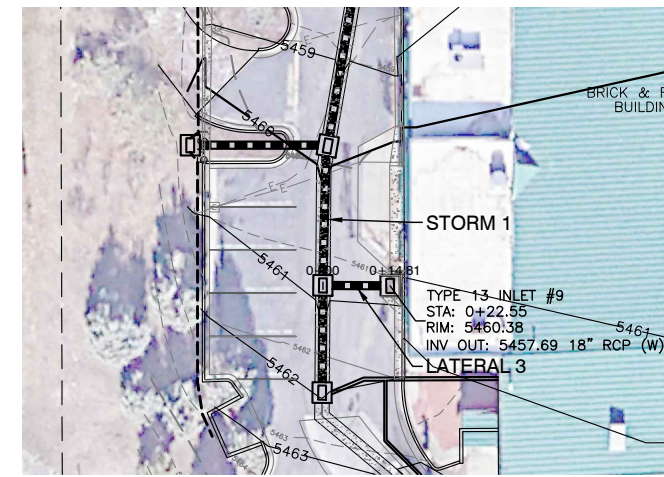
Job #	23024
Date	3/6/26
Drawn By	WSS
Designed By	JFM
Checked By	JFM
File	JT-storm pandp.dwg
Scale	As Shown



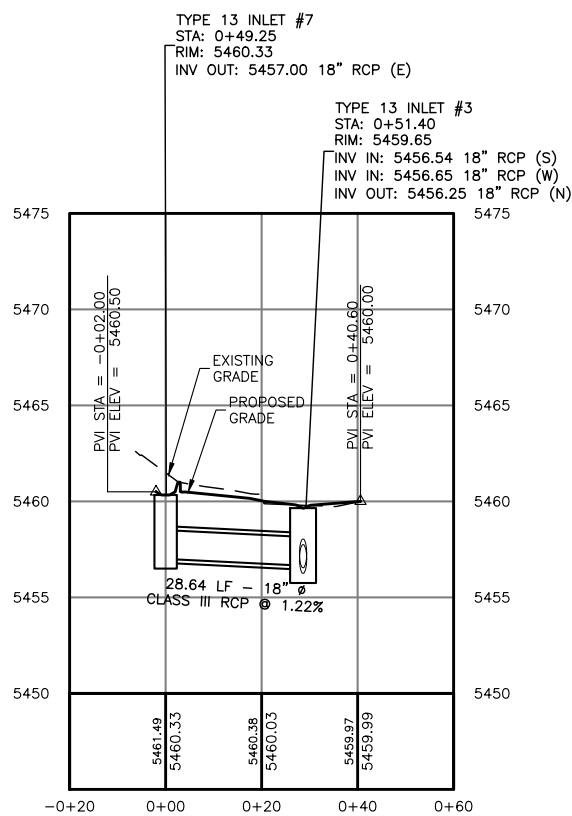
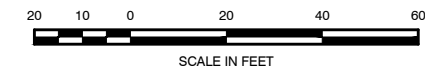
LATERAL 1



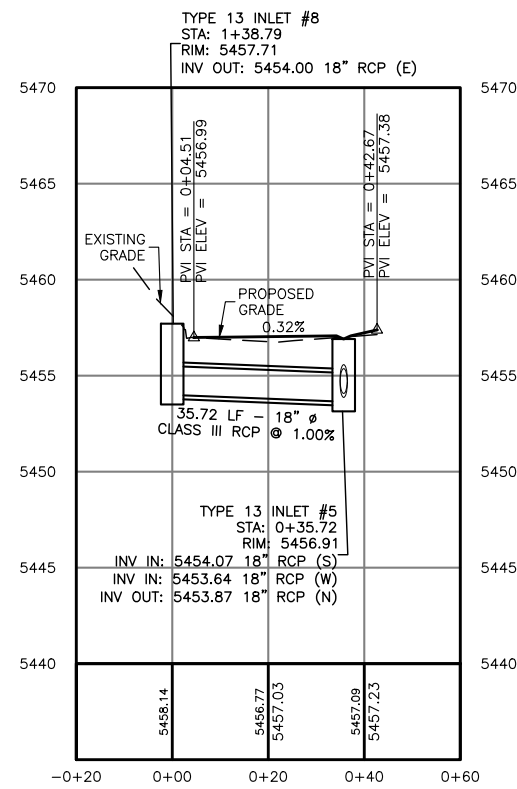
LATERAL 2



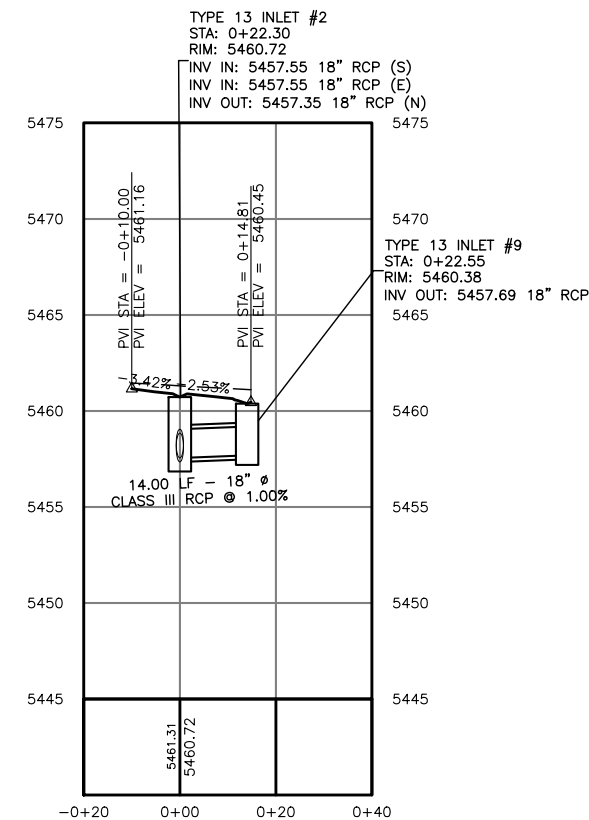
LATERAL 3



LATERAL 1



LATERAL 2

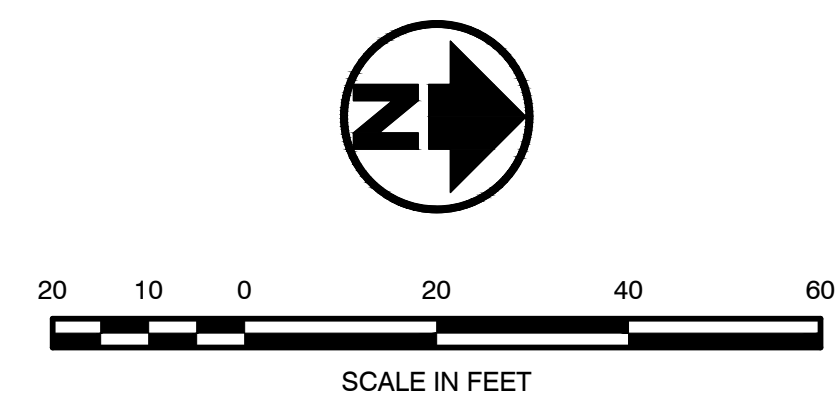
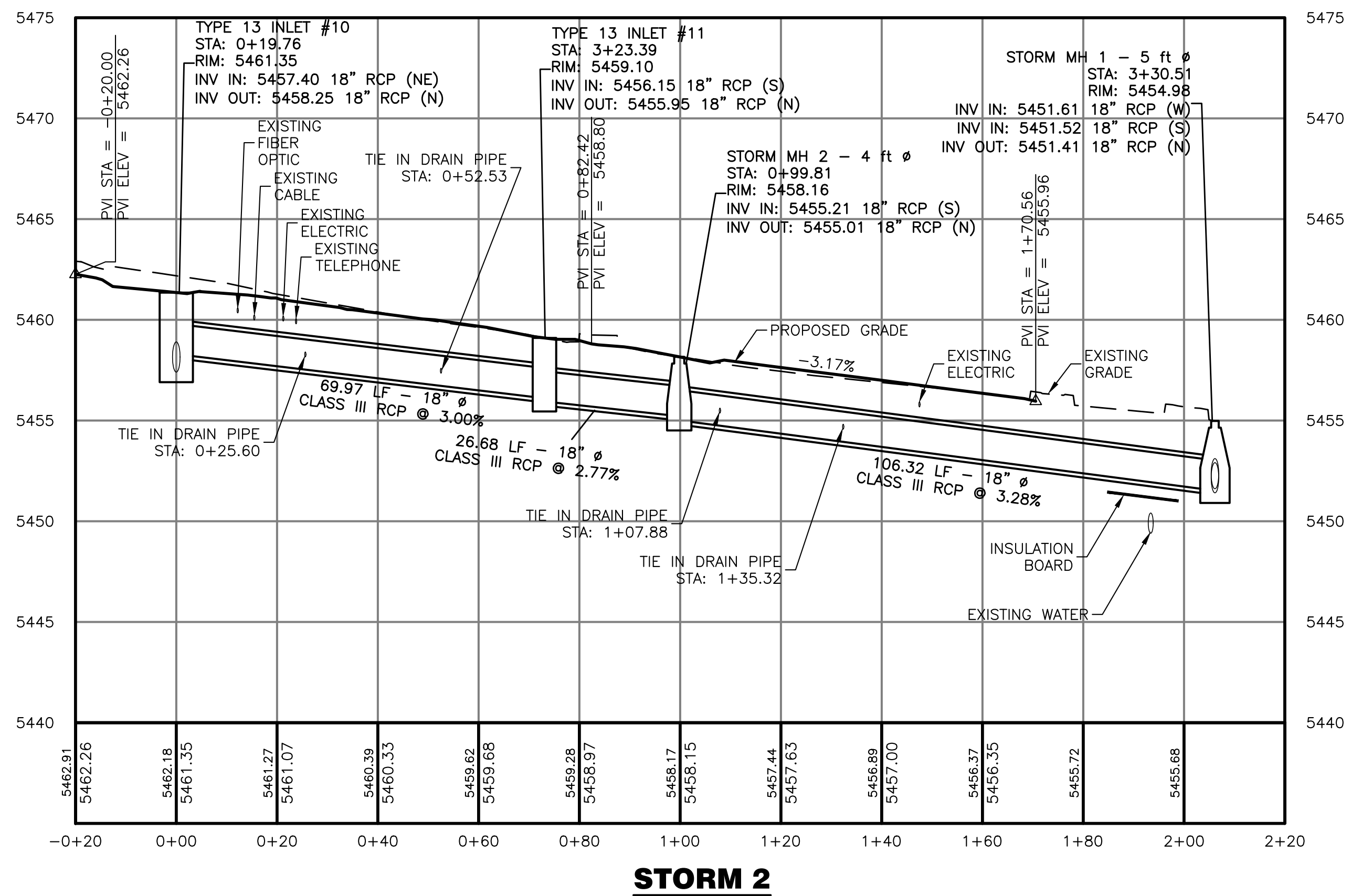
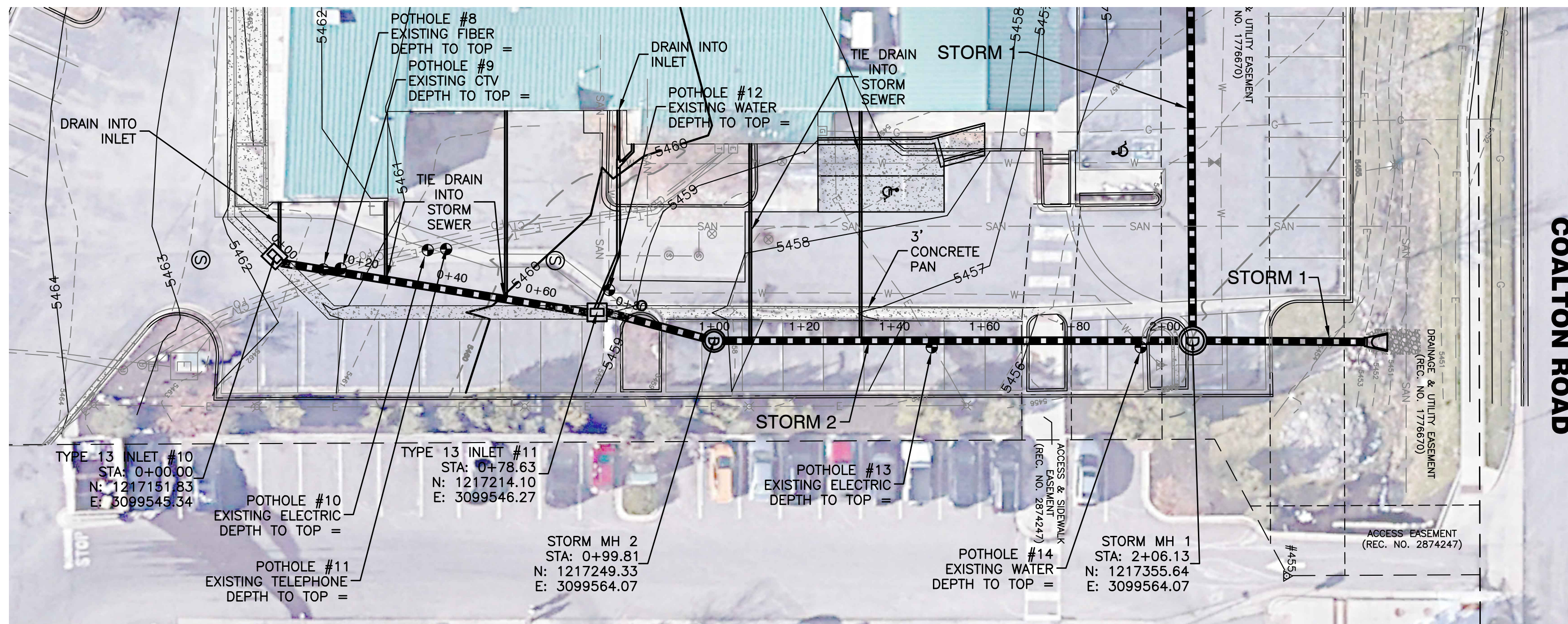


LATERAL 3

ISSUED FOR REVIEW

REVISIONS		No.	Date	By	Chk	Description
1	3.30.26	WSS	JFM	Low	Comments	

Job #	23024
Date	3/6/26
Drawn By	WSS
Designed By	WSS
Checked By	JFM
File	JT-storm pandp.dwg
Scale	As Shown



ISSUED FOR REVIEW

REVISIONS		No.	Date	By	Chk	Description
1	3.30.26	WSS	JFM			Low - Commence

Job # 23024
 Date 3/6/26
 Drawn By WSS
 Designed By WSS
 Checked By JFM
 File JT-storm pandp.dwg
 Scale As Shown

Sheet: **14** of **22**

Town Of Superior

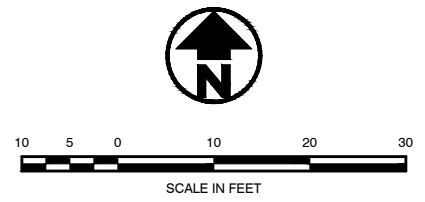
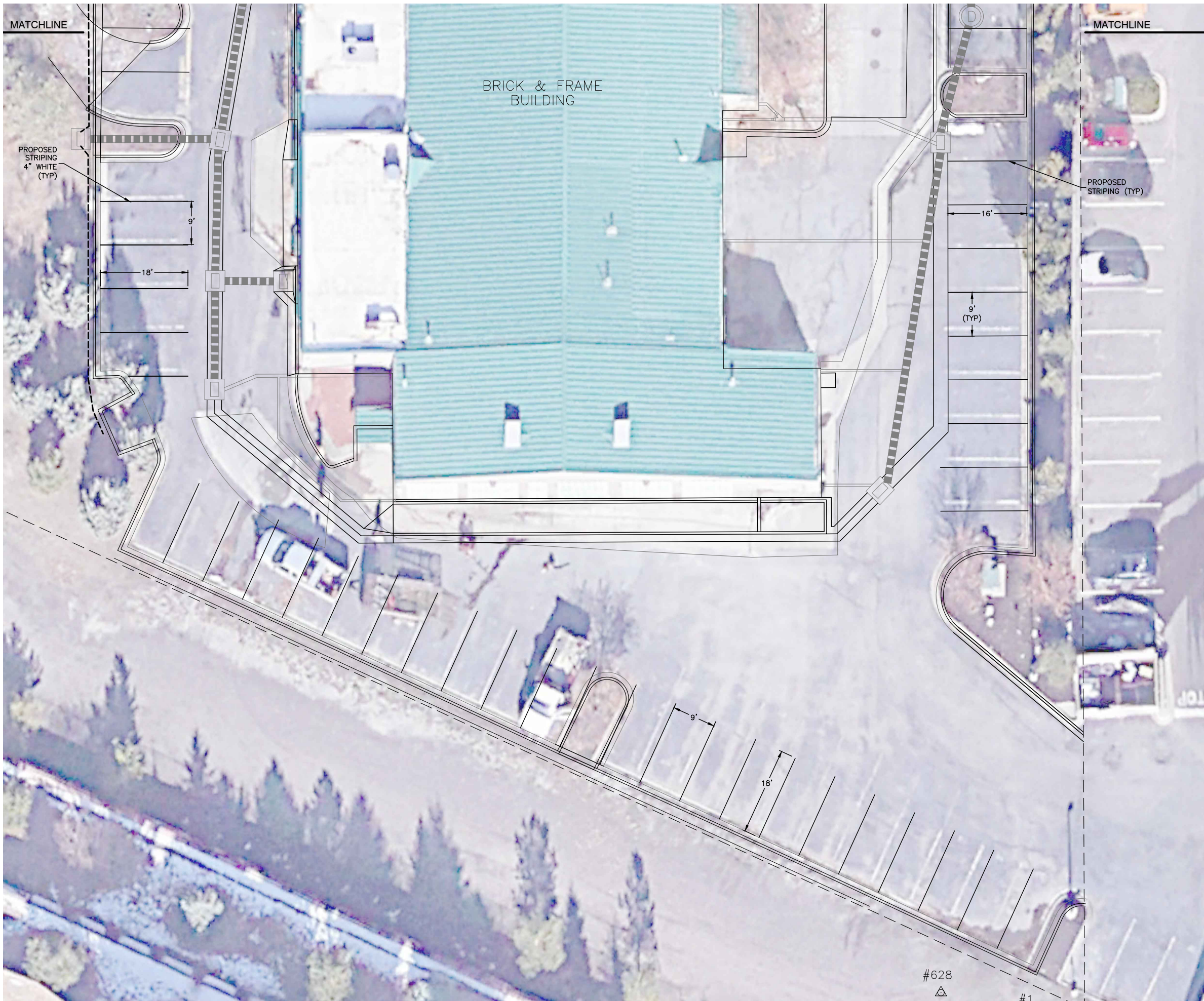
Community Center Improvements

Storm Sewer Plan & Profile



J&T Consulting, Inc.
 305 Denver Avenue - Suite D
 Fort Lupton, CO 80621
 Ph: 303-857-6222
 www.jtconsulting.com

COALTON ROAD



ISSUED FOR REVIEW

REVISIONS		No.	Date	By	Chk	Description
		1	3/30/26	WSS	JFM	Town Comments

Job # 23024
 Date 3/6/26
 Drawn By WSS
 Designed By WSS
 Checked By JFM
 File JT-striping.dwg
 Scale As Shown

Sheet: **16** of 22

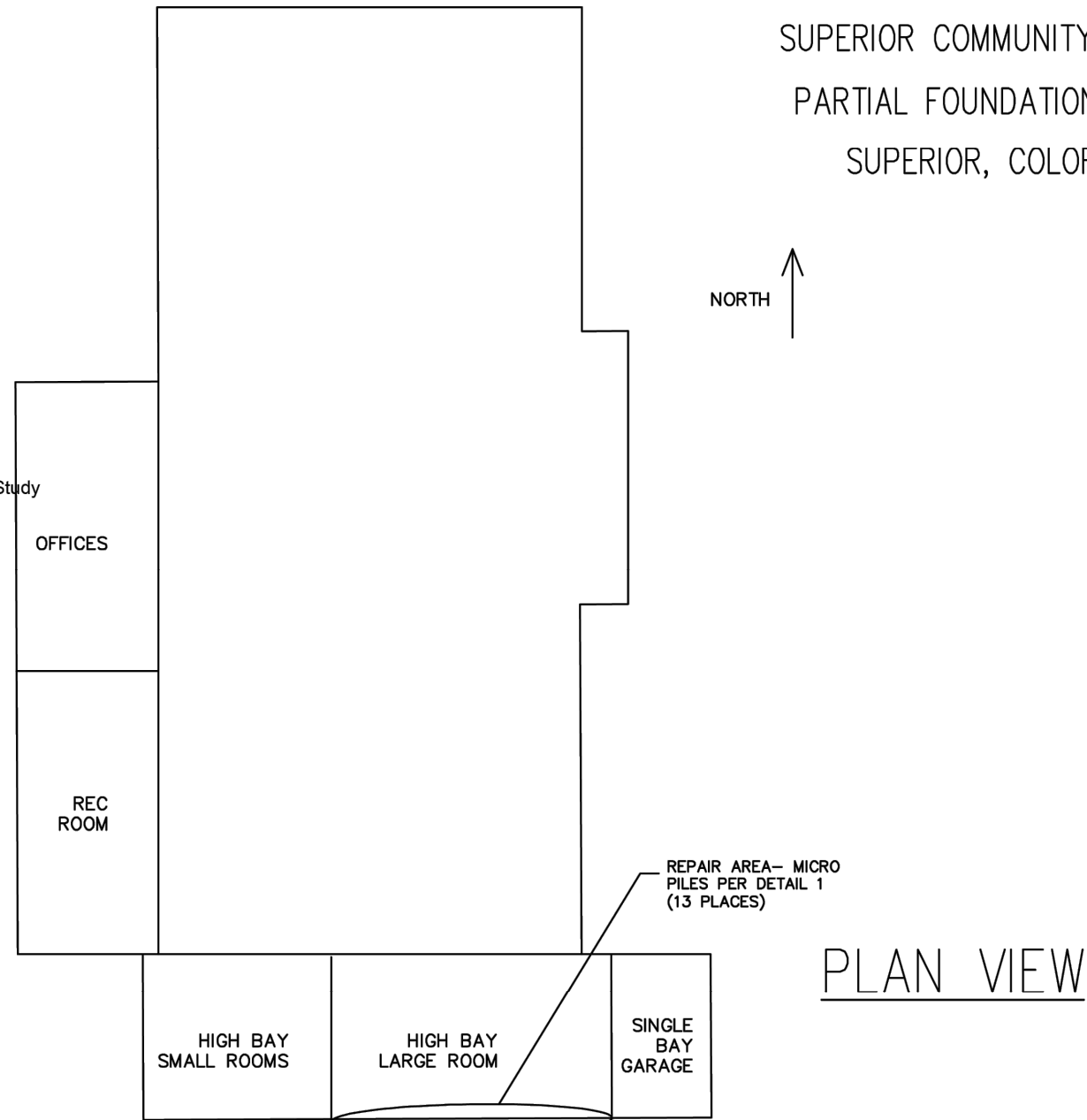
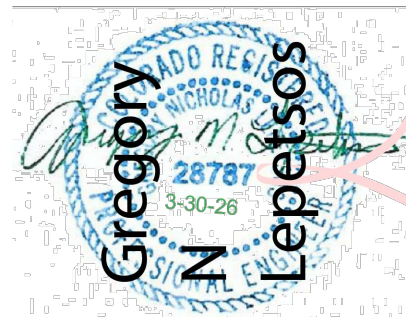
Town Of Superior
Community Center Improvements
 Striping Plan

J&T Consulting, Inc.
 305 Denver Avenue - Suite D
 Fort Lupton, CO 80621
 Ph: 303.857.6222
 www.jtconsulting.com

GENERAL NOTES

- (1.0) All dimensions and slopes shall be verified by the contractor prior to construction.
- (1.1) The contractor shall ensure all OSHA requirements are satisfied during excavation, and installation. The Lepetos Group shall not be responsible for worksite safety.
- (1.2) Contractor shall be responsible for obtaining all required permits.
- (1.3) For purposes of this foundation repair, north is considered to be as shown on the drawing.
- (1.4) Contact this office to observe final installation, including installation logs.
- (1.4.1) A CMT representative should observe micropile installation, from drilling through grouting, in an effort to confirm actual subsurface conditions are consistent with those presented in the CMT study (Project No. 23.3055) If conditions deviate significantly, recommendations may require modification.
- (1.5) Contractor shall be responsible for locating all utilities before beginning work.
- (1.6) Contractor shall verify soft soils, including loose cohesionless soils, soft organic soils, or soft clays are not present.
- (1.7) Contact this office if water table is found to be above the bottom of foundation before installing the repairs.
- (1.8) Micropile design contained herein conforms with per CMT Technical Services Geotechnical Study Geotechnical Study Project Number 23.3055, Section 12.5, and Microplie Design and Construction Reference Manual, Publication FHWA NHI-05-039
- (1.9) Grout shall be per CMT Technical Services Geotechnical Study Project Number 23.3055, Section 12.5 paragraph h. Ultimate Grout-to-Ground bond strength = 39 psi
- (1.10) Micropile reinforcement shall be Williams Grade 75 Thread Bar (or approved equiv) with Williams couplers as required to develop full bar strength.
- (1.11) Micropile brackets shall be Williams Form WMS-MPB-40-TC (or approved equiv) and installed with all fasteners as required to provide allowable capacity of 40 kips.
- (1.12) Welding shall be per AWD D1.1.
- (1.13) Minimum required allowable axial load capacity = 40k per micropile min total depth = 29'. min 9' embedment into bedrock.
- (1.14) Ultimate Grout-to-Ground bond strength of 39 psi shall be confirmed by contractor. Contact this office to update design if different bond strength is determined to be appropriate for the contractor's installation methods and equipment.
- (3.0) Repair design was performed in accordance with the 2018 IBC as modified by the Town of Superior Municipal Code

Ground Snow Load = 30 psf
 Basic Wind Speed Vult = 154 mph
 Seismic Cat: B
 Frost Depth = 36"



REVISIONS

No.	Date	By	Chk	Description
1	3/30/26	WSS	JFM	Town Comments

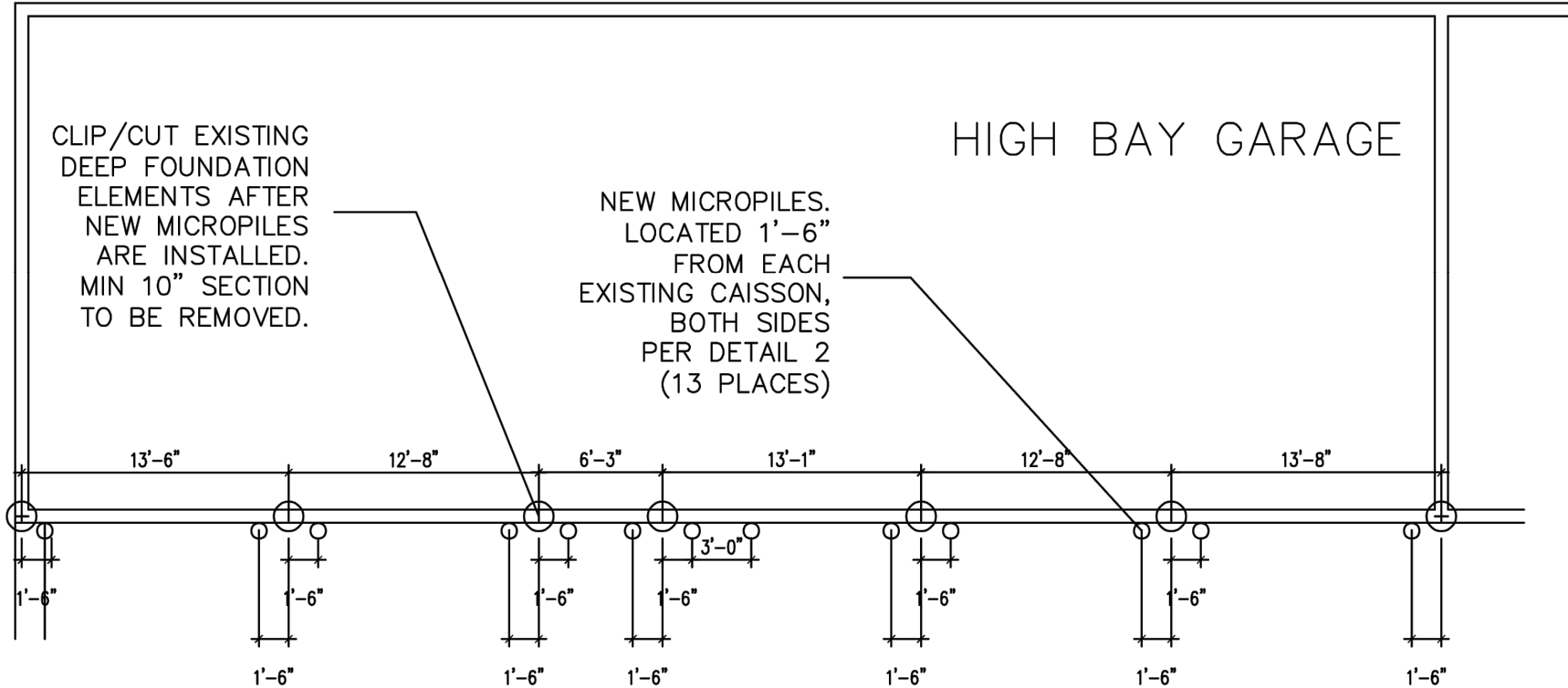
Job #	23024
Date	3/6/26
Drawn By	WSS
Designed By	WSS
Checked By	JFM
File	JT-structural.dwg
Scale	As Shown

Sheet: _____ of: _____

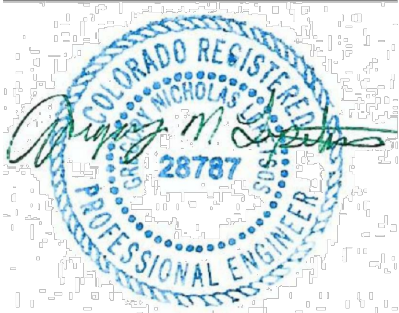
ISSUED FOR REVIEW

SUPERIOR COMMUNITY CENTER
 PARTIAL FOUNDATION REPAIR
 SUPERIOR, COLORADO

NOTE: CONCRETE FLOOR IS A STRUCTURAL SLAB SUPPORTED ON
 CAISSON GRID. THE REPAIRS DEFINED HEREIN WILL NOT ADDRESS
 INTERIOR SLAB AND CAISSON MOVEMENT IF IT IS OCCURRING.



DETAIL 1: NEW MICROPILE LOCATIONS (APPROXIMATE)

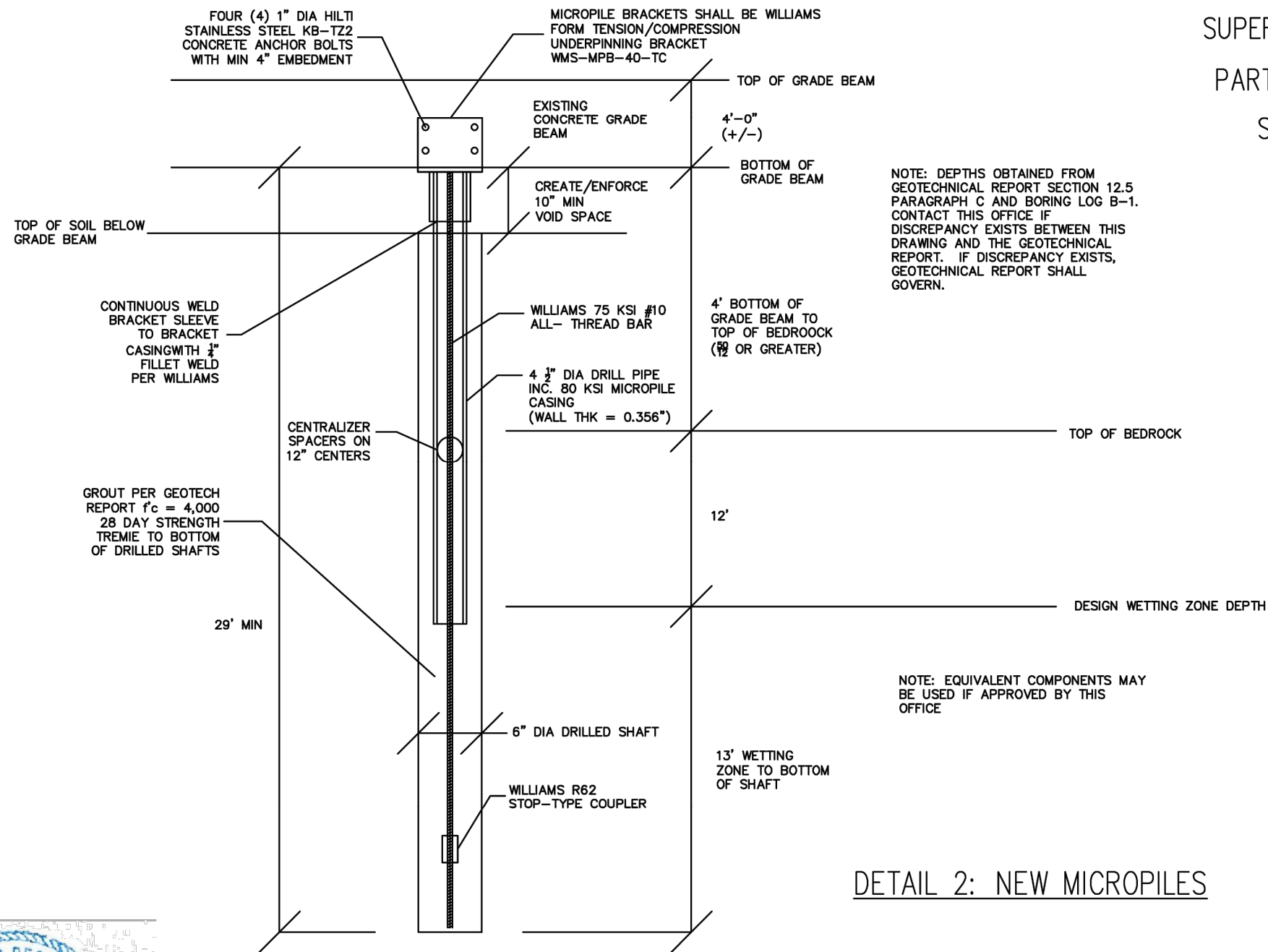


REVISIONS		Description
No.	Date	By / Chk
1	3/30/26	WSS / JFM

ISSUED FOR REVIEW

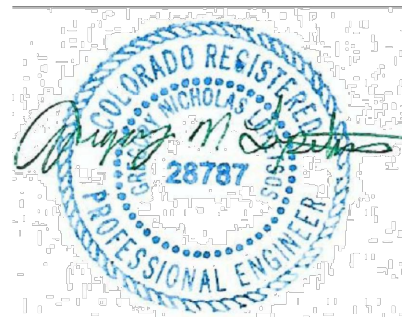
Job #	23024
Date	3/6/26
Drawn By	WSS
Designed By	WSS
Checked By	JFM
File	JT-structural.dwg
Scale	As Shown

SUPERIOR COMMUNITY CENTER
PARTIAL FOUNDATION REPAIR
SUPERIOR, COLORADO



DETAIL 2: NEW MICROPILES

(NO SCALE)

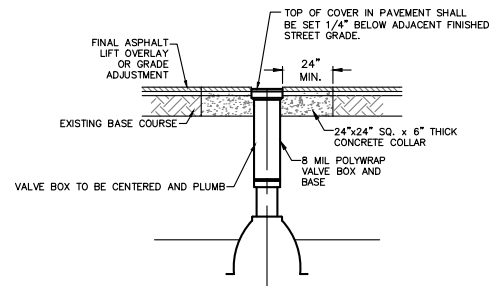


REVISIONS		Description
No.	Date	By
1	3/30/26	WSS
		JFM

Job #	23024
Date	3/6/26
Drawn By	WSS
Designed By	WSS
Checked By	JFM
File	JT-structural.dwg
Scale	As Shown

Sheet: or:

ISSUED FOR REVIEW

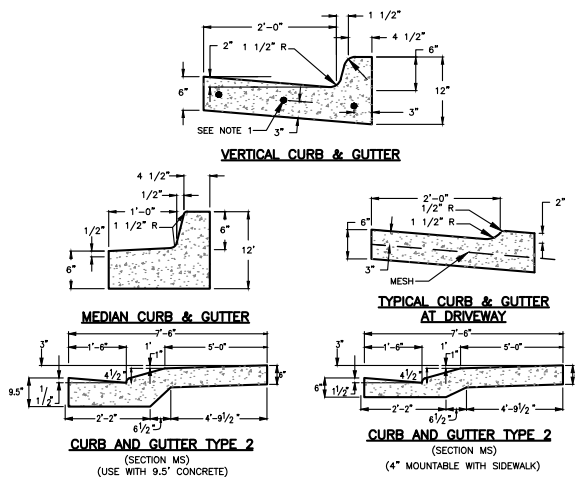


THESE DETAILS ARE PROVIDED FOR STANDARDIZATION PURPOSES ONLY. THIS DETAIL REPRESENTS MINIMUM DESIGN STANDARDS WHICH MAY REQUIRE UPGRADING FOR SPECIFIC APPLICATIONS. N.T.S.



VALVE BOX ADJUSTMENT

DATE: JANUARY 2019 SHEET 400-6



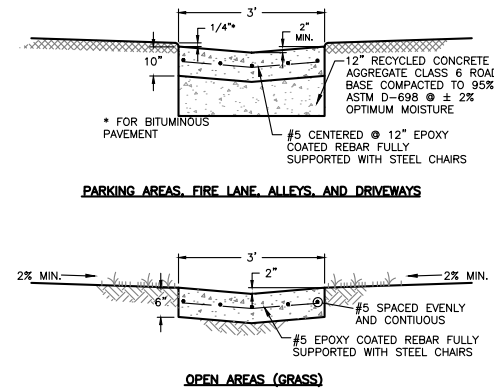
- NOTES:**
- NO. 5 EPOXY COATED REBAR SHALL BE USED IN ALL CURB RETURNS WITH 25' OR LARGER RADIUS. THE REBAR SHALL BE USED FROM BEGINNING TO END OF THE CURB RETURN AND BE FULLY SUPPORTED WITH STEEL CHAIRS.
 - SUBGRADE UNDER CURB, GUTTER AND SIDEWALK TO BE COMPACTED TO 95% AASHTO T-180.
 - ALL ATTACHED SIDEWALK SHALL BE PLACED MONOLITHIC WITH THE CURB AND GUTTER.
 - CONCRETE TO BE CDOT B/D 4,500 PSI STRENGTH
 - REMOVE AND REPLACE SECTIONS OF CURB AND GUTTER/SIDEWALK SHALL BE REMOVED FROM CONTROL JOINT TO CONTROL JOINT. #5 X 24 INCH EPOXY COATED REBAR DOWELS SHALL BE DRILLED AND EPOXIED 12 INCHES INTO EXISTING CONCRET, MINIMUM 3 LOCATIONS

THESE DETAILS ARE PROVIDED FOR STANDARDIZATION PURPOSES ONLY. THIS DETAIL REPRESENTS MINIMUM DESIGN STANDARDS WHICH MAY REQUIRE UPGRADING FOR SPECIFIC APPLICATIONS. N.T.S.



CURB, GUTTER, AND WALK

DATE: JANUARY 2019 SHEET 800-1



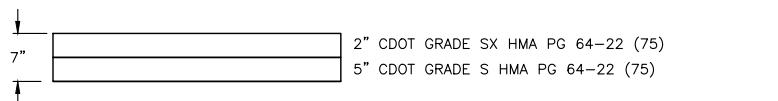
- NOTES:**
- CONCRETE TO BE CDOT CLASS B/D 4,500 PSI
 - TOOL JOINTS EVER 10 LINEAL FEET
 - DOWEL 6" INTO EXISTING CONCRETE USING #5 EPOXY COATED REBAR

THESE DETAILS ARE PROVIDED FOR STANDARDIZATION PURPOSES ONLY. THIS DETAIL REPRESENTS MINIMUM DESIGN STANDARDS WHICH MAY REQUIRE UPGRADING FOR SPECIFIC APPLICATIONS. N.T.S.

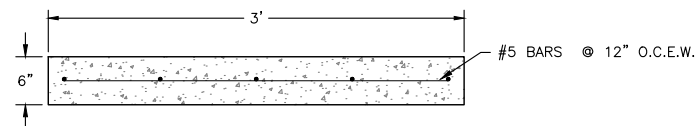


VALLEY GUTTER

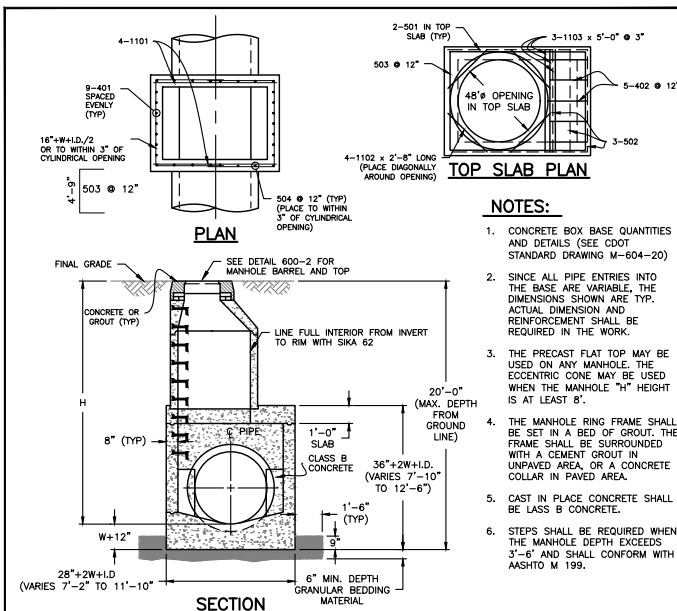
DATE: JANUARY 2019 SHEET 800-4



ASPHALT SECTION



REINFORCED CONCRETE APRON DETAIL
SCALE 1" = 1'



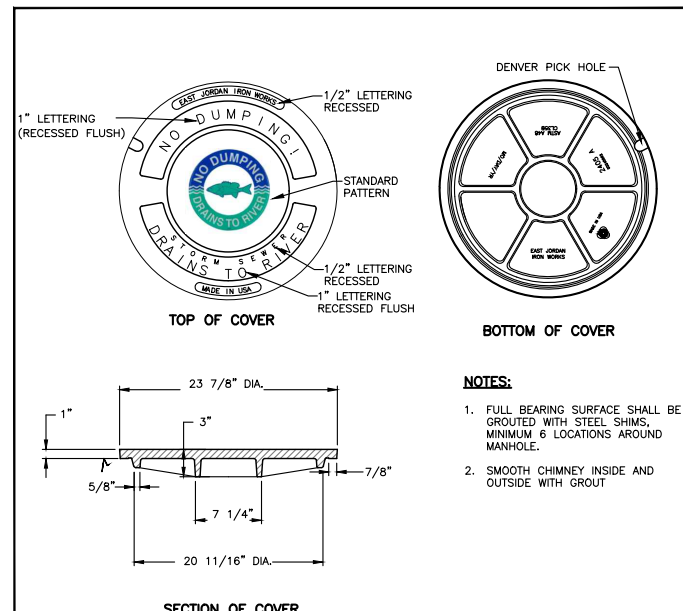
- NOTES:**
- CONCRETE BOX BASE QUANTITIES AND DETAILS (SEE CDOT STANDARD DRAWING M-604-20)
 - SINCE ALL PIPE ENTRIES INTO THE BASE ARE VARIABLE, THE DIMENSIONS SHOWN ARE TYP. ACTUAL DIMENSION AND REINFORCEMENT SHALL BE REQUIRED IN THE WORK.
 - THE PRECAST FLAT TOP MAY BE USED ON ANY MANHOLE. THE ECCENTRIC CONE MAY BE USED WHEN THE MANHOLE "H" HEIGHT IS AT LEAST 8'.
 - THE MANHOLE RING FRAME SHALL BE SET IN A BED OF GROUT. THE FRAME SHALL BE SURROUNDED WITH A CEMENT GROUT IN UNPAVED AREA OR A CONCRETE COLLAR IN PAVED AREA.
 - CAST IN PLACE CONCRETE SHALL BE LASS B CONCRETE.
 - STEPS SHALL BE REQUIRED WHEN THE MANHOLE DEPTH EXCEEDS 3'-6" AND SHALL CONFORM WITH AASHTO M 199.
- ALL REINFORCING STEEL SHALL BE GRADE 60 AND EPOXY COATED. VERTICAL STEEL SHALL BE PLACED AT CENTERLINE OF WALL. ALL BARS SHALL HAVE A MIN. 2" CLEARANCE.
 - ALL PIPE ENTRIES INTO THE BASE OF MANHOLE SHALL BE CONNECTED BY OPEN CHANNELIZATION ADJUSTED FOR PIPE SIZE, SHAPE, SLOPE, AND DIRECTION OF FLOW. DETAILS SHOWN ARE FOR TYPICAL INSTALLATIONS WITH ALL INVERTS OF SAME ELEVATION. FOR ELEVATION DIFFERENCE BETWEEN INVERTS, SPECIAL CLASS/CHANNEL DETAILS WILL BE SHOWN ON PLANS.
 - FLOW CHANNEL AND INVERTS SHALL BE FORMED BY SHAPING WITH CLASS B CONCRETE.
 - STUB-OUTS SHALL EXTEND 2' MIN. BEYOND OUTSIDE WALL SURFACE OF MANHOLE AND BE SATISFACTORILY PLUGGED.
 - THE SLOPE OF MANHOLE COVER SHALL MATCH ROADWAY PROFILE AND CROSS-SLOPE.
 - WHEN FINAL GRADE IS PAVEMENT SURFACE, RECESS MANHOLE RING AND COVER 1/4" MIN. TO 1/2" MAX.

THESE DETAILS ARE PROVIDED FOR STANDARDIZATION PURPOSES ONLY. THIS DETAIL REPRESENTS MINIMUM DESIGN STANDARDS WHICH MAY REQUIRE UPGRADING FOR SPECIFIC APPLICATIONS. N.T.S.



STANDARD STORM MANHOLE BOX BASE

DATE: JANUARY 2019 SHEET 800-1



- NOTES:**
- FULL BEARING SURFACE SHALL BE GROUTED WITH STEEL SHIMS, MINIMUM 6 LOCATIONS AROUND MANHOLE.
 - SMOOTH CHIMNEY INSIDE AND OUTSIDE WITH GROUT

THESE DETAILS ARE PROVIDED FOR STANDARDIZATION PURPOSES ONLY. THIS DETAIL REPRESENTS MINIMUM DESIGN STANDARDS WHICH MAY REQUIRE UPGRADING FOR SPECIFIC APPLICATIONS. N.T.S.



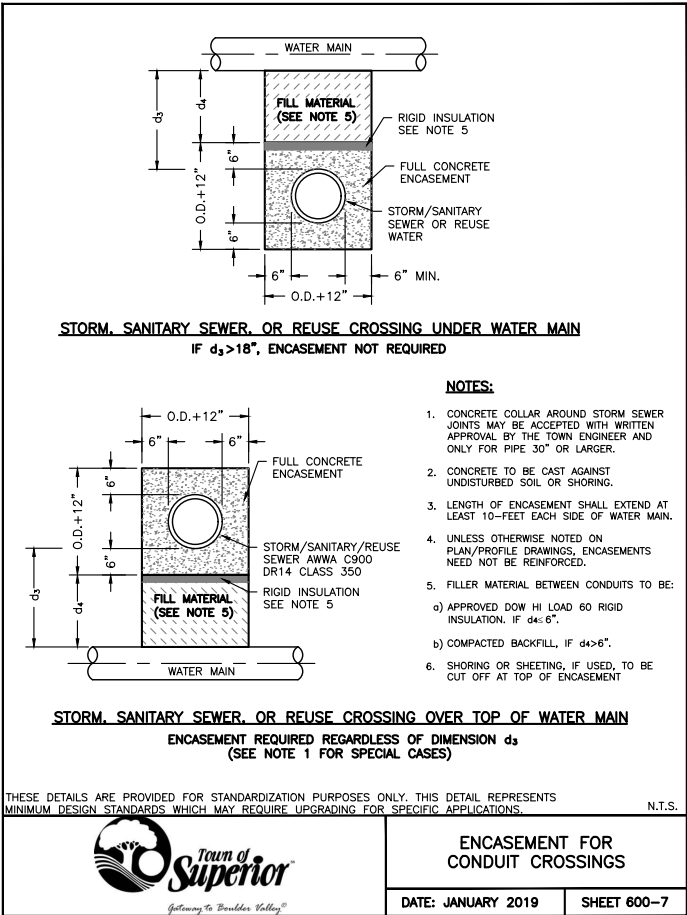
STORM SEWER MANHOLE LID

DATE: JANUARY 2019 SHEET 800-6

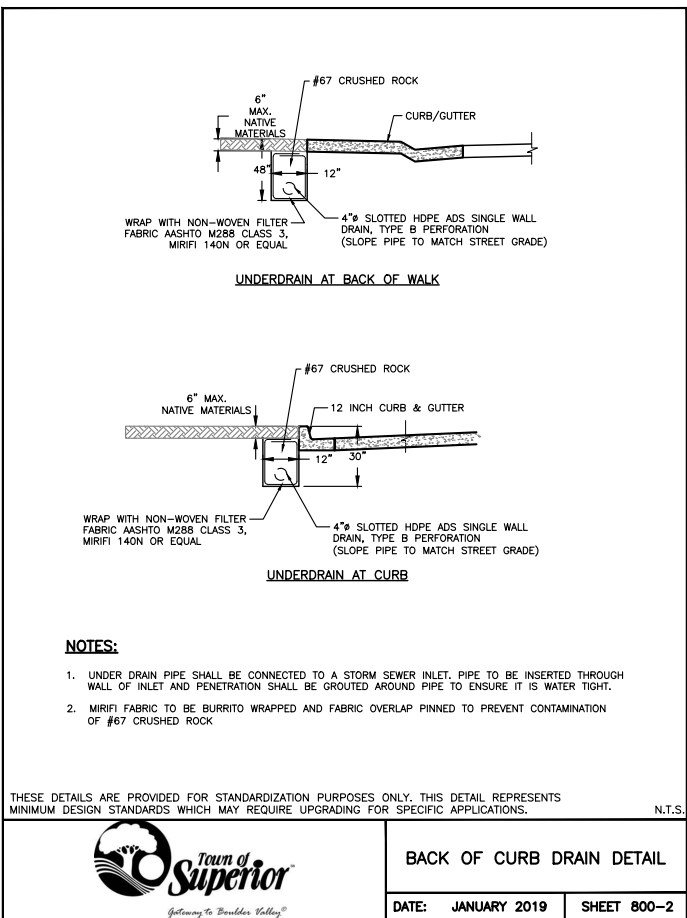
No.	Date	By	Chk	Description
1	3.30.26	WSS	JFM	Town Comments

Job #	23024
Date	3/6/26
Drawn By	WSS
Designed By	WSS
Checked By	JFM
File	JT-details.dwg
Scale	As Shown

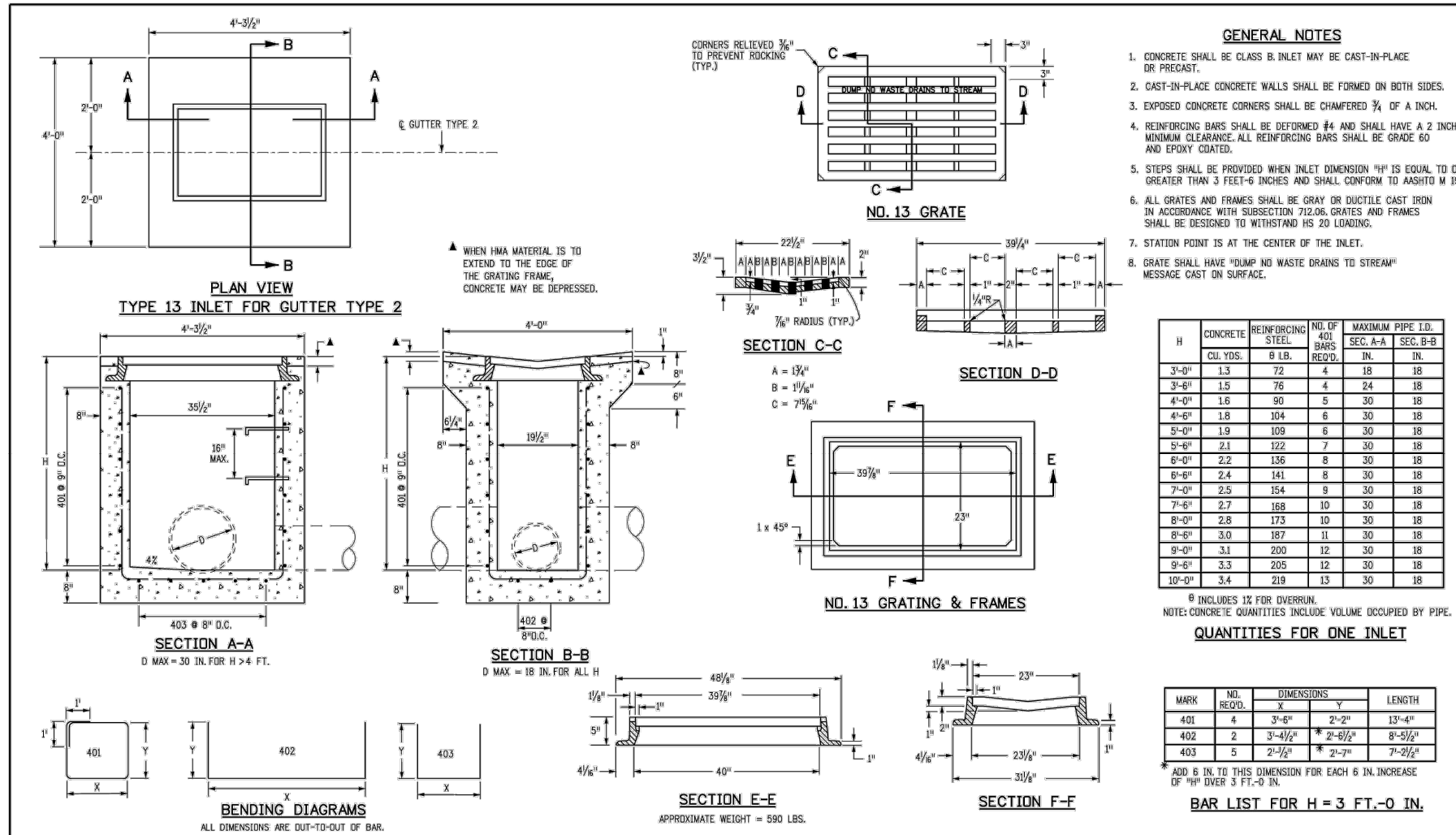
Sheet: _____ of: _____



ENCASMENT FOR CONDUIT CROSSINGS
DATE: JANUARY 2019 SHEET 600-7



BACK OF CURB DRAIN DETAIL
DATE: JANUARY 2019 SHEET 800-2

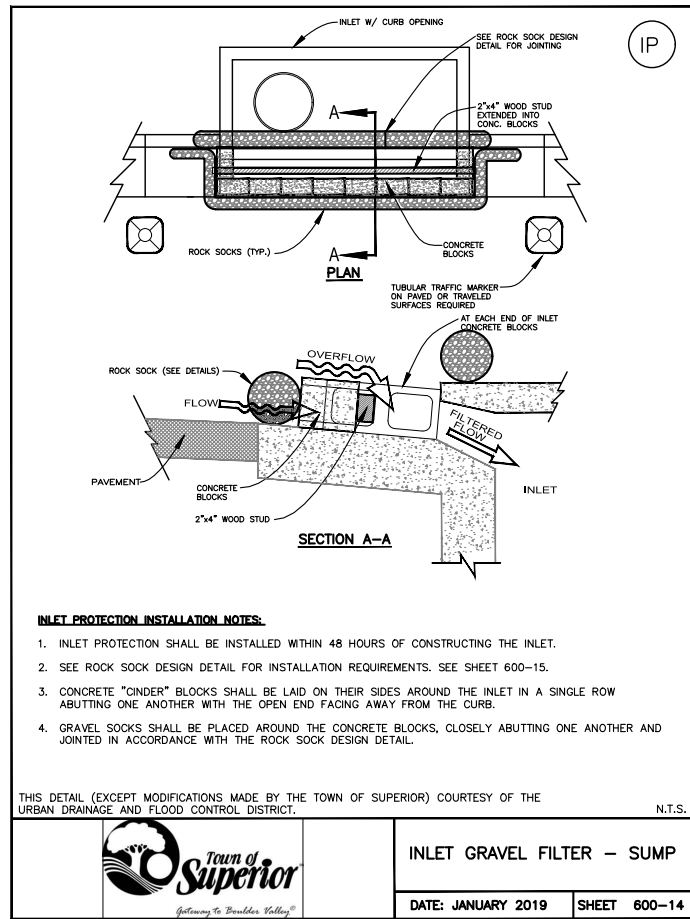


Computer File Information Creation Date: 07/31/19 Designer Initials: JBK Last Modification Date: 07/31/19 Detailer Initials: LTA CAD Ver.: MicroStation V8 Scale: Not to Scale Units: English	Sheet Revisions Date: _____ Comments: _____ (R-X) _____ (R-X) _____ (R-X) _____	Colorado Department of Transportation 2829 West Howard Place CDDT HQ, 3rd Floor Denver, CO 80204 Phone: 303-757-9021 FAX: 303-757-9868 Project Development Branch	CONCRETE INLET TYPE 13 Issued by the Project Development Branch: July 31, 2019	STANDARD PLAN NO. M-604-13 Standard Sheet No. 1 of 1 Project Sheet Number: _____
---	--	--	--	--

ISSUED FOR REVIEW

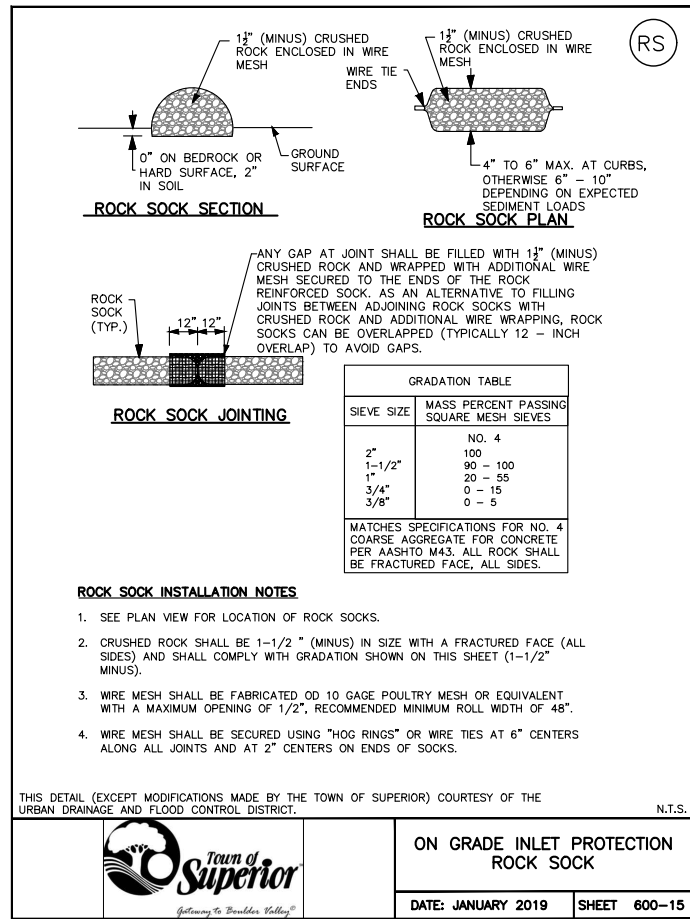
REVISIONS		Description	
No.	Date	By	Chk
1	3.30.26	WSS	JFM

Job #	23024
Date	3/6/26
Drawn By	WSS
Designed By	WSS
Checked By	JFM
File	JT-details.dwg
Scale	As Shown



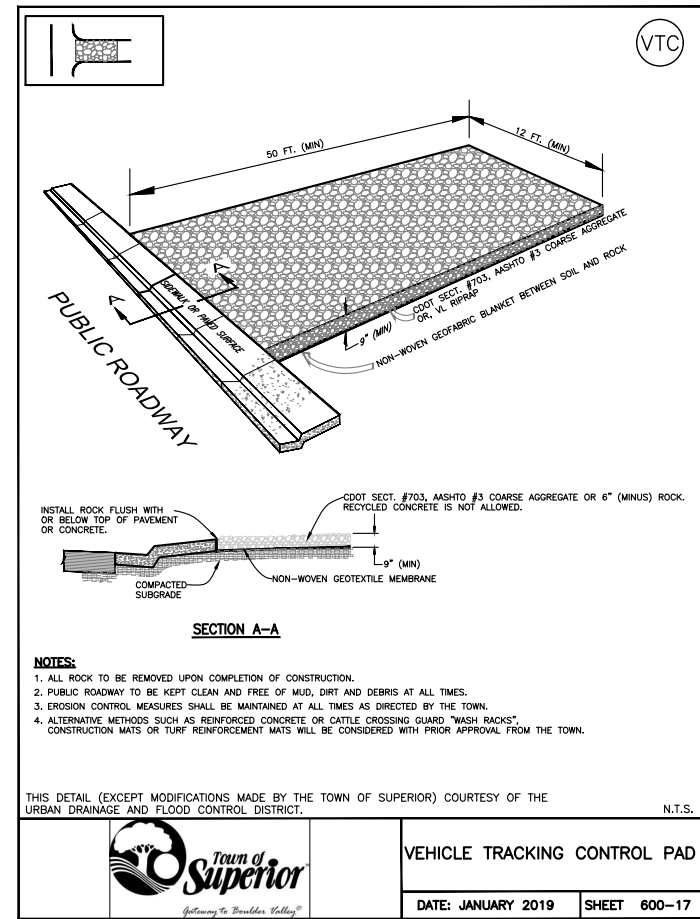
INLET GRAVEL FILTER – SUMP

DATE: JANUARY 2019 SHEET 600-14



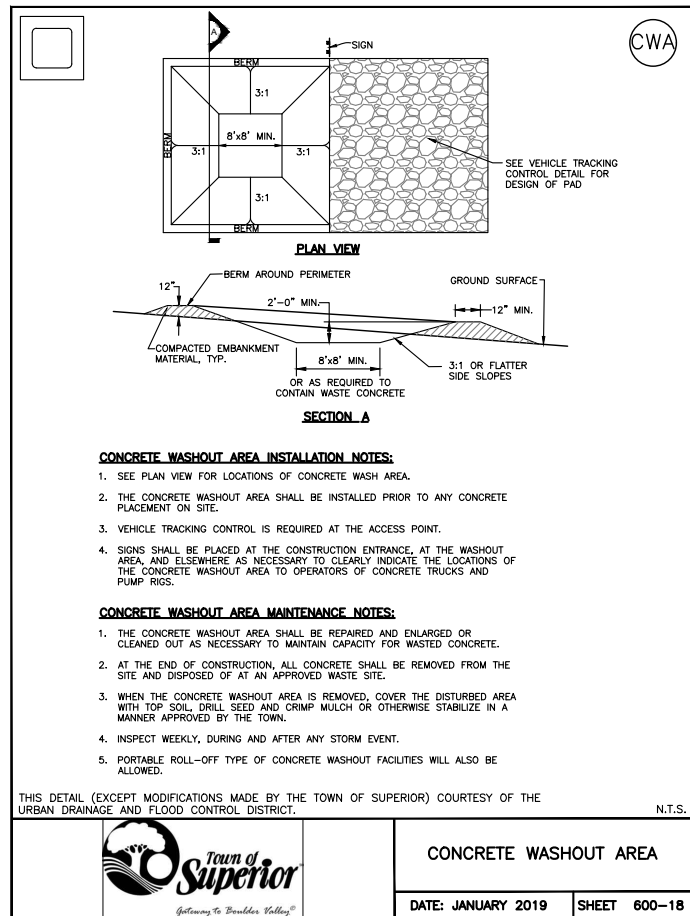
ON GRADE INLET PROTECTION ROCK SOCK

DATE: JANUARY 2019 SHEET 600-15



VEHICLE TRACKING CONTROL PAD

DATE: JANUARY 2019 SHEET 600-17



CONCRETE WASHOUT AREA

DATE: JANUARY 2019 SHEET 600-18

REVISIONS	
No.	Description
1	Low Comment

Job #	23024
Date	3/6/26
Drawn By	WSS
Designed By	WSS
Checked By	JFM
File	JT-ec details.dwg
Scale	As Shown

ISSUED FOR REVIEW