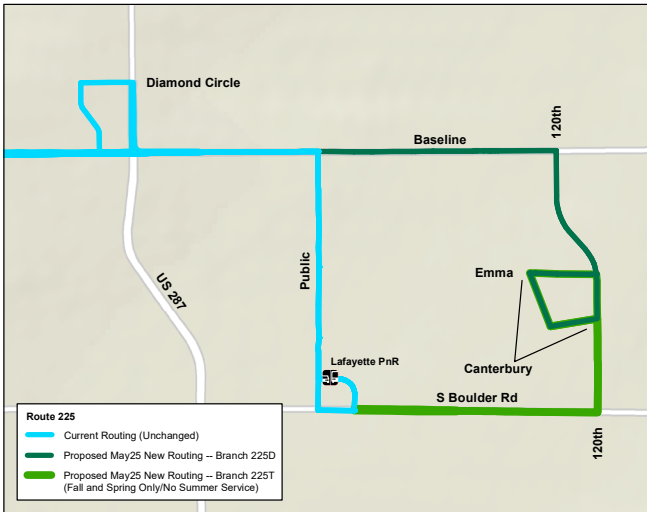




RTD SERVICE CHANGES COMING MAY 25TH!

RTD is enhancing several bus routes in the northern service area—including Boulder, Broomfield, Lafayette, and Louisville—by expanding coverage, improving accessibility, and increasing service hours and frequency. See below for the changes coming to you!



ROUTE 225/225D

New Service Area: Route 225D extends to Willoughby Corner, ending at Canterbury Dr. via Baseline Rd & 120th St.

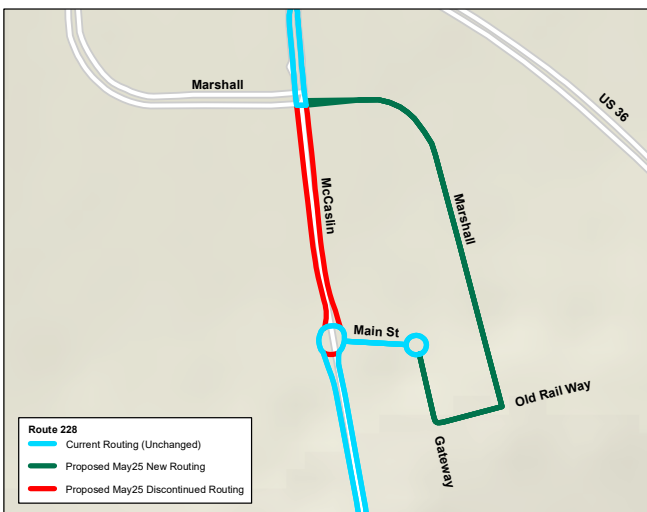
Operating Days: Weekdays & Saturdays

Frequency:

- Every 30 mins (combined with Route 225) between Downtown Boulder Station & Baseline/Public Rd.
- Every 60 mins to Lafayette PnR and Willoughby Corner

Changes:

- Route will serve Boulder County Low-Income Housing (N 120th St & E Emma St)
- Seasonal tripper suspended, adjusting for seasonal demand



ROUTE 228

New Routing:

- Serves Superior Downtown via Marshall Rd, Old Railway & Gateway Dr.
- Northern segment rerouted via Dagny Way from 95th St.

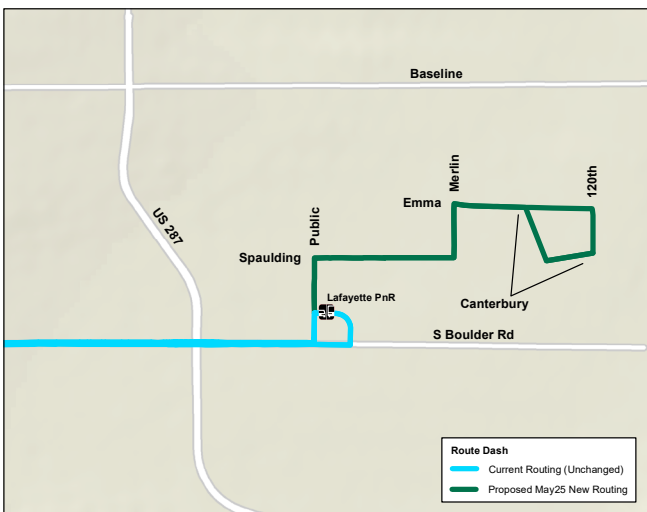
Operating Days: 7 days/week

Frequency:

- Every 60 mins

Changes:

- Improved access to YMCA, local businesses, and neighborhoods
- Route will serve a more densely populated area in Downtown Superior



ROUTE DASH

New Routing: From Lafayette PnR to Canterbury Dr via Public Rd, Spaulding St, Merline Dr, Emma St & 120th St.

Operating Days: 7 days/week

Frequency:

- Every 30 mins (Weekdays & Saturdays)
- Every 60 mins (Sundays & holidays)

Changes:

- Route will serve Boulder County Low-Income Housing (N 120th & E Emma St.)
- Seasonal tripper suspended, adjusting for seasonal demand

To view the full list of May Service Changes, visit rtd-denver.com/service-changes.

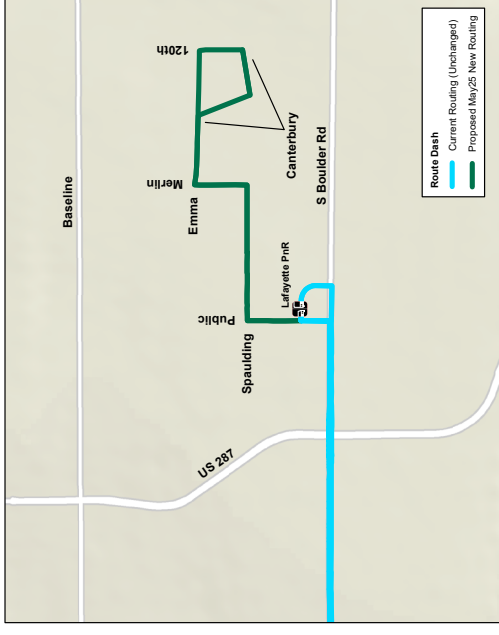
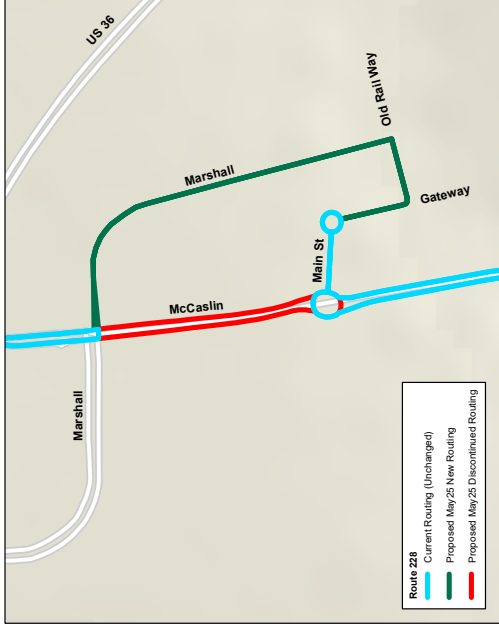
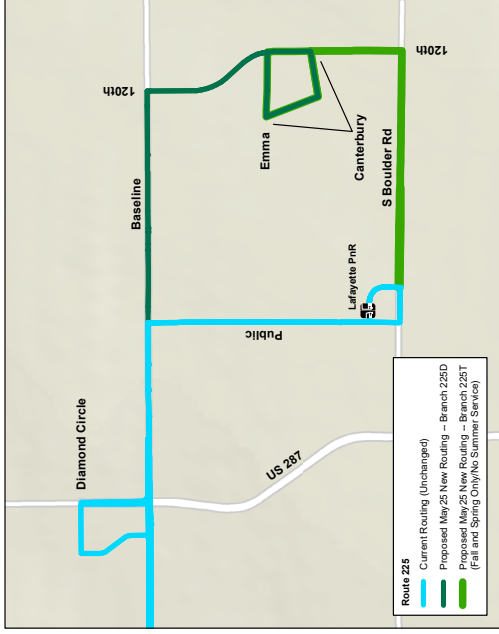
rtd-denver.com
303.299.6000





RTD SERVICE CHANGES COMING MAY 25TH!

RTD is enhancing several bus routes with extended coverage, improved accessibility, and increased service hours and frequency.



ROUTE 225/225D

New Service Area: Route 225D extends to Willoughby Corner, ending at Canterbury Dr. via Baseline Rd & 120th St.

Operating Days: Weekdays & Saturdays

Frequency:

- Every 30 mins (combined with Route 225) between Downtown Boulder Station & Baseline/ Public Rd.
- Every 60 mins to Lafayette Park-n-Ride

Changes:

- Route will serve Boulder County Low-Income Housing (N 120th St & E Emma St)
- Seasonal tripper suspended, adjusting for seasonal demand

ROUTE 228

New Routing:

- Serves Superior Downtown via Marshall Rd, Old Railway, & Gateway Dr.
- Northern segment rerouted via Dagny Way from 95th St.

Operating Days: 7 days/week

Frequency:

- Every 60 mins

Changes:

- Improved access to YMCA, local businesses, and neighborhoods
- Route will serve more densely populated areas

ROUTE DASH

New Routing: From Lafayette Park-n-Ride to Canterbury Dr via Public Rd, Spaulding St, Merline Dr, Emma St & 120th St.

Operating Days: 7 days/week

Frequency:

- Every 30 mins (Weekdays & Saturdays)
- Every 60 mins (Sundays & holidays)

Changes:

- Route will serve Boulder County Low-Income Housing (N 120th & E Emma)
- Seasonal tripper suspended, adjusting for seasonal demand

To view the full list of May Service Changes, visit rtd-denver.com/service-changes.

rtd-denver.com
303.299.6000

